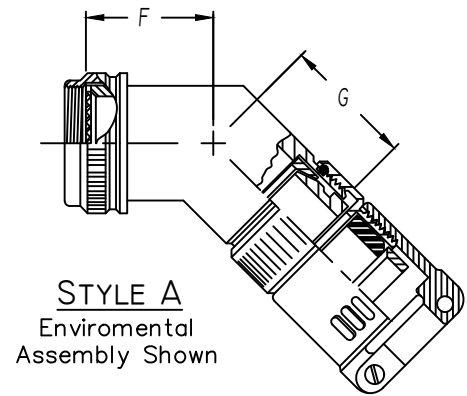
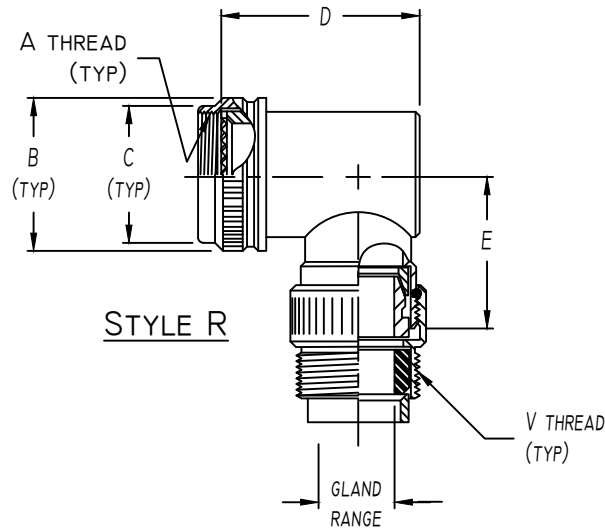




Table 2 - Cable Entry Data

ENTRY ORDER NUMBER	ENVIRONMENTAL GLAND RANGE		NON ENVIRONMENTAL CABLE RANGE		UNIFIED THREAD
	MAX	MIN	MAX	MIN	
03	.250	.156	.250	.156	.500-28
04	.312	.188	.312	.188	.625-24
06	.438	.281	.438	.281	.750-20
08	.562	.375	.562	.344	.875-20
10	.625	.500	.625	.375	1.000-20
12	.750	.500	.750	.438	1.188-18
16	.938	.625	.938	.562	1.438-18
20	1.250	.938	1.250	.750	1.750-18
24	1.375	1.000	1.375	.781	2.000-18
28	1.625	1.250	1.625	.969	2.250-16
32	1.875	1.500	1.875	1.125	2.500-16

WHEN MAXIMUM CABLE ENTRY EXCEEDS THE CONNECTOR INTERFACE DIAMETER, A 2 PIECE ADAPTER WILL BE SUPPLIED.



**OTHER CONNECTOR CODES AVAILABLE
 CONTACT ENGINEERING FOR DETAILS**

ASSEMBLY PART NUMBER

TO ESTABLISH YOU P/N, USE THE FOLLOWING EXAMPLE

E 41 30 S 23 08 9 B 51

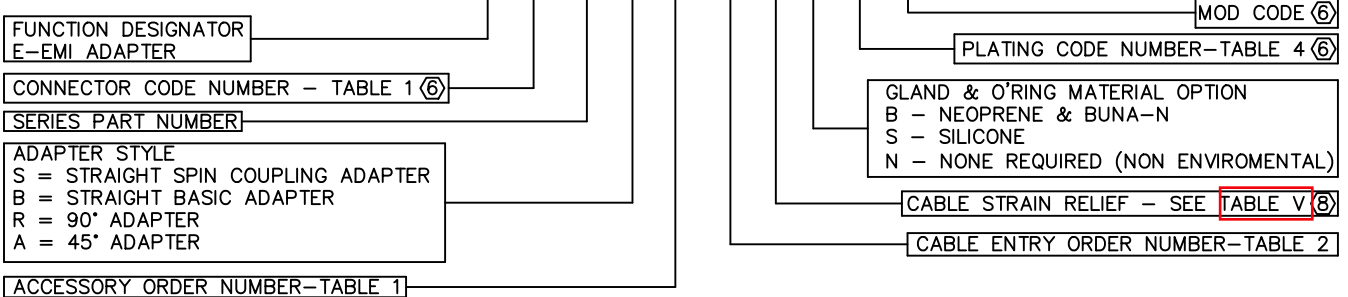


Table 1 - Order Number Data

E * * 30
SHEET 2 OF 2

Accessory Order Number By Connector Code & Shell Size

ORDER NUMBER	MIL-DTL-38999 SERIES III & IV		MIL-DTL-38999 SERIES I & II		MIL-DTL-5015 CRIMP		MIL-DTL-26482 SER 2		MIL-DTL-83723 SER III		MIL-C-81703 NAS 1399		ORDER NUMBER
	40	41	54		A UNIFIED THREAD	B MAX DIA.	C MAX DIA.	D REF DIM.	E REF DIM.	F REF DIM.	G REF DIM.		
01	③				.375-32	.750	.531	1.031			.500		01
03					.438-27	.812	.594	1.094			.500		03
04		8, 9			.438-28	.812	.594	1.000	1.188		.750		04
05			8 & 8S		.500-20	.875	.656	.938			.719	1.062	05
06					.500-28	.875	.656	1.562			1.062		06
07	9, A				M12 x 1.0	.719	.656	.938	1.250		.500		07
08		10, 11		3	.562-24	.844	.719	1.375			.750		08
10			10,10S,10SL		.625-24	1.000	.781	1.562			1.062		10
11					.625-28	1.000	.781	1.688			1.062		11
12	11, B				M15 x 1.0	.844	.781	1.125	1.312		.500	1.094	12
13		12, 13			.688-24	1.062	.844	1.500			.750		13
15			12 & 12S	7	.750-20	1.125	.906	1.812			.875		15
16	13, C				M18 x 1.0	.969	.906	1.188	1.375		.562	1.125	16
18		14, 15			.812-20	1.188	.969	1.500			.812		18
19			14 & 14S	12	.875-20	1.250	1.031	1.875			.750		19
20					.875-28	1.250	1.031	1.938			1.125		20
21	15, D				M22 x 1.0	1.094	1.031	1.312	1.438		.562		21
23		16, 17			.938-20	1.312	1.094	1.625			.875		23
24			16 & 16S	19	1.000-20	1.375	1.156	2.000			.719		24
25					1.000-28	1.375	1.156	2.062	1.500		1.156		25
26	17, E				M25 x 1.0	1.219	1.156	1.438			.594	1.188	26
28		18, 19	18	27	1.062-18	1.438	1.219	1.688			.875		28
29					1.125-18	1.500	1.281	2.156			.938		29
30					1.125-24	1.500	1.281	1.938	1.562		.625		30
31					1.125-28	1.500	1.281	2.125			1.188		31
32	19, F				M28 x 1.0	1.344	1.281	1.500			.625		32
34		20, 21	20	37	1.188-18	1.562	1.344	1.812			.875		34
35					1.250-18	1.625	1.406	2.250			.938		35
36					1.250-28	1.625	1.406	2.250	1.625		1.250	1.219	36
37	21, G				M31 x 1.0	1.469	1.406	1.625			.688		37
39		22, 23	22		1.312-18	1.688	1.469	1.938			.938		39
40					1.375-18	1.750	1.531	2.375			1.000		40
41					1.375-28	1.750	1.531	2.375			1.250		41
42	23, H				M34 x 1.0	1.594	1.531	1.750			.656	1.250	42
44		24, 25	24		1.438-18	1.812	1.594	2.000			1.000		44
45				61	1.500-18	1.875	1.656	1.875	1.688		.938	1.438	45
46					1.500-28	1.875	1.656	2.500			1.250		46
47	25, J				M37 x 1.0	1.719	1.656	1.875			.688	1.250	47
48					1.562-18	1.938	1.719	2.125			1.062		48
49					1.625-18	2.000	1.781	2.500	1.812		1.250	1.312	49
51			28		1.750-18	2.125	1.906	2.062			.938		51
52					1.875-16	2.250	2.031	2.750	1.938		1.125	1.344	52
53					1.906-18	2.281	2.062	2.438			.750		53
54			32		2.000-18	2.375	2.156	2.312			.969		54
55					2.062-16	2.469	2.219	3.000			.969		55
56					2.062-24	2.469	2.219	1.875	2.062		.812	1.406	56
57					2.125-16	2.500	2.281	1.875			.812		57
58					2.125-18	2.500	2.281	1.875			.812		58
59			36		2.250-16	2.625	2.406	2.438			1.031		59
60					2.312-16	2.719	2.469	3.250	2.188		1.000	1.438	60
61					2.375-16	2.750	2.531	2.000			.875		61
62			40		2.500-16	2.875	2.656	2.688	2.750		1.125	1.500	62

NOTES: UNLESS OTHERWISE SPECIFIED.

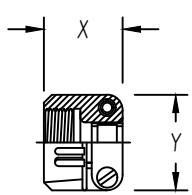
- 1 THREADS ARE RIGHT HAND IN ACCORDANCE WITH FED-STD-H28, CLASS 2B.
- ③ THREADS NOTED ARE ISO METRIC, CLASS 6H.
- 5 TABLE 1 LISTS THE MOST USED CONNECTOR CODES. SEE SECTION 11 FOR OTHER CODES AVAILABLE AND COMPLETE CONNECTOR PART NUMBER CROSS REFERENCE.
- ⑥ SEE SUPPORT DATA SECTION FOR PLATING AND MODIFICATION CODE OPTIONS.
- ⑧ SEE SUPPORT DATA SECTION FOR AVAILABLE STYLES



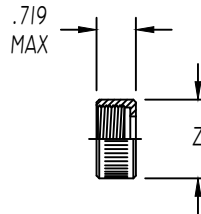
TABLE V
 CABLE STRAIN RELIEF STYLES

Table 2 - Environmental / Non-Environmental Cable Entry Data

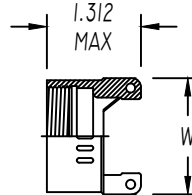
ENTRY ORDER NUMBER	ENVIRONMENTAL		NON ENVIRONMENTAL		V UNIFIED THREAD	R MAX DIM.	S MAX DIM.	T MAX DIM.	U MAX DIM.	W MAX DIM.	X MAX DIM.	Y MAX DIM.	Z MAX DIA.
	GLAND	RANGE	CABLE	RANGE									
	MAX	MIN	MAX	MIN									
△ 03	.250	.156	.250	.156	.500-28	N / A	.812	1.375	.812	N / A	.844	.781	.656
04	.312	.188	.312	.188	.625-24	1.031	.937	1.375	.937	.875	.844	.906	.781
06	.438	.281	.438	.281	.750-20	1.031	1.062	1.375	1.062	1.000	.906	1.094	.906
08	.562	.375	.562	.344	.875-20	1.031	1.188	1.375	1.188	1.125	.969	1.188	1.031
10	.625	.500	.625	.375	1.000-20	1.094	1.312	1.437	1.312	1.250	.969	1.281	1.156
12	.750	.500	.750	.438	1.188-18	1.219	1.562	1.437	1.562	1.375	.969	1.500	1.344
△ 14	.875	.750	.875	.719	1.250-18	N / A	N / A	N / A	N / A	1.500	N / A	N / A	N / A
16	1.000	.844	1.000	.781	1.438-18	1.219	1.750	1.562	1.750	1.625	1.062	1.719	1.594
20	1.250	.938	1.250	.750	1.750-18	1.344	2.250	1.812	2.250	1.750	1.125	2.062	1.906
24	1.375	1.000	1.375	.781	2.000-18	N / A	2.375	2.062	2.375	N / A	1.188	2.312	2.156
28	1.625	1.250	1.625	.969	2.250-16	N / A	2.625	2.062	2.625	N / A	1.719	2.719	2.406
32	1.875	1.500	1.875	1.125	2.500-16	N / A	2.812	2.188	2.812	N / A	1.781	2.969	2.656



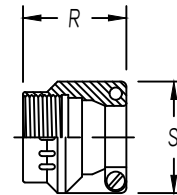
STYLE 1 △
 AS85049/41A CLAMP
 (MS 3057**A)



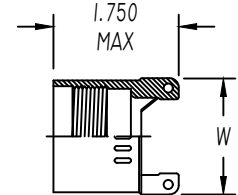
STYLE 2 △
 NUT



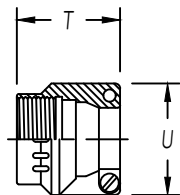
STYLE 3 △
 NON-ENVIRONMENTAL



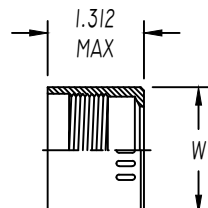
STYLE 3 △
 NUT ENVIRONMENTAL
 (AS85049/1)
 (MS 3057-**B)



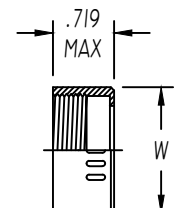
STYLE 3 △
 ENVIRONMENTAL



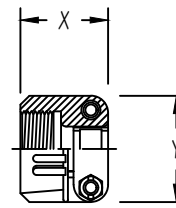
STYLE 4 △
 STRAIN RELIEF ENVIRONMENTAL
 (AS85049/2)
 (MS 3057-**C)



STYLE 4 △
 ENVIRONMENTAL



STYLE 4 △
 NON-ENVIRONMENTAL



STYLE 9 △
 STRAIN-RELIEF CLAMP WITH TELESCOPING SCREWS

NOTES: UNLESS OTHERWISE SPECIFIED

△1 AVAILABLE ONLY ON: A**01, A**30, E**01, E**03, E**04, E**05, E**07, E**21, E**30, & E**33

△2 AVAILABLE ONLY ON: E**15, E**17, E**38, E**40, & E**41

3. CONSULT FACTORY FOR SIZES AND INFORMATION NOT LISTED