



**Table 2 - Cable Entry Data**

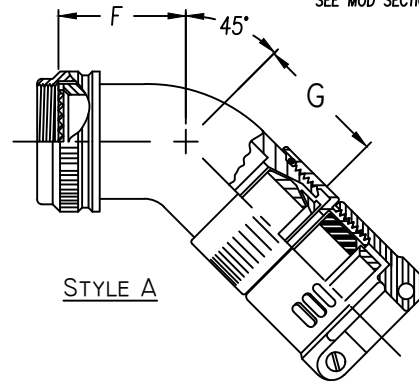
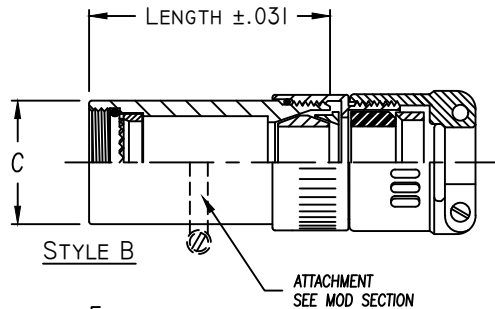
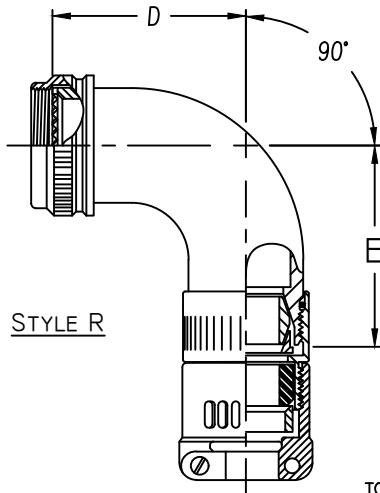
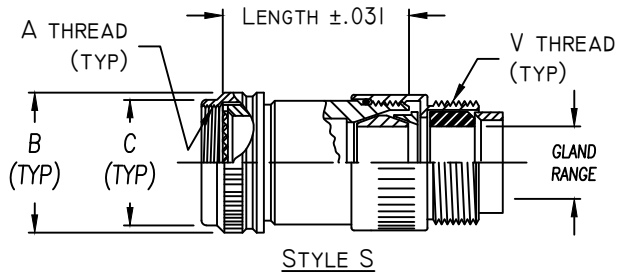
ENTRY ORDER NUMBER	ENVIRONMENTAL GLAND RANGE		NON ENVIRONMENTAL CABLE RANGE		V UNIFIED THREAD
	MAX	MIN	MAX	MIN	
03	.250	.156	.250	.156	.500-28
04	.312	.188	.312	.188	.625-24
06	.438	.281	.438	.281	.750-20
08	.562	.375	.562	.344	.875-20
10	.625	.500	.625	.375	1.000-20
12	.750	.500	.750	.438	1.188-18
16	.938	.625	.938	.562	1.438-18
20	1.250	.938	1.250	.750	1.750-18
24	1.375	1.000	1.375	.781	2.000-18
28	1.625	1.250	1.625	.969	2.250-16
32	1.875	1.500	1.875	1.125	2.500-16

WHEN MAXIMUM CABLE ENTRY EXCEEDS THE CONNECTOR INTERFACE DIAMETER, A 2 PIECE ADAPTER WILL BE SUPPLIED.

**Table 3 - Length Code Data**

CONN CODE NUMBER	MIN ORDER LENGTH	MIN LENGTH CODE
40	1.250	05
41	1.250	05
54	1.250	05

**OTHER CONNECTOR CODES AVAILABLE  
 CONTACT ENGINEERING FOR DETAILS**



ASSEMBLY PART NUMBER  
 TO ESTABLISH YOU P/N, USE THE FOLLOWING EXAMPLE

**E 41 07 S 23 08 9 B 06 51**

FUNCTION DESIGNATOR  
 E-EMI ADAPTER

CONNECTOR CODE NUMBER - TABLE 1 (6)

SERIES PART NUMBER

ADAPTER STYLE  
 S = STRAIGHT SPIN COUPLING ADAPTER  
 B = STRAIGHT BASIC ADAPTER  
 R = 90° ADAPTER  
 A = 45° ADAPTER

ACCESSORY ORDER NUMBER-TABLE 1

CABLE ENTRY ORDER NUMBER-TABLE 2

MOD CODE (6)

PLATING CODE NUMBER-TABLE 4 (6)

LENGTH CODE NUMBER  
 LENGTHS ARE CHOSEN IN 1/4" INCREMENTS  
 (IE 08=2.00") SEE TABLE 3 FOR MINIMUM  
 INSERT 00 FOR R & A STYLE ADAPTERS

GLAND & O'RING MATERIAL OPTION  
 B - NEOPRENE & BUNA-N  
 S - SILICONE  
 N - NONE REQUIRED (NON ENVIROMENTAL)

CABLE STRAIN RELIEF - SEE TABLE V (8)

# Table 1 - Order Number Data

E \* \* 07  
SHEET 2 OF 2

## Accessory Order Number By Connector Code & Shell Size

ORDER NUMBER	MIL-DTL-38999 SERIES III & IV		MIL-DTL-38999 SERIES I & II		MIL-DTL-5015 CRIMP MIL-DTL-26482 SER 2 MIL-DTL-83723 SER III		MIL-C-81703 NAS 1599		ORDER NUMBER			
	40	41	54		A	B	C	D		E	F	G
	③				UNIFIED THREAD	MAX DIA.	MAX DIA.	REF DIM.	REF DIM.	REF DIM.	REF DIM.	
01					.375-32	.750	.531					01
03					.438-27	.812	.594					03
04		8, 9			.438-28	.812	.594	1.125	1.188	.812	.875	04
05			8 & 8S		.500-20	.875	.656					05
06					.500-28	.875	.656					06
07	9, A				M12 x 1.0	.719	.656					07
08		10, 11		3	.562-24	.844	.719					08
10			10,10S,10SL		.625-24	1.000	.781	1.250	1.312	.875	.938	10
11					.625-28	1.000	.781					11
12	11, B				M15 x 1.0	.844	.781					12
13		12, 13			.688-24	1.062	.844					13
15			12 & 12S	7	.750-20	1.125	.906	1.375	1.438	.938	1.000	15
16	13, C				M18 x 1.0	.969	.906					16
18		14, 15			.812-20	1.188	.969					18
19			14 & 14S	12	.875-20	1.250	1.031	1.500	1.562	1.000	1.062	19
20					.875-28	1.250	1.031					20
21	15, D				M22 x 1.0	1.094	1.031					21
23		16, 17			.938-20	1.312	1.094					23
24			16 & 16S	19	1.000-20	1.375	1.156	1.625	1.688	1.062	1.125	24
25					1.000-28	1.375	1.156					25
26	17, E				M25 x 1.0	1.219	1.156					26
28		18, 19	18	27	1.062-18	1.438	1.219					28
29					1.125-18	1.500	1.281					29
30					1.125-24	1.500	1.281	1.750	1.812	1.094	1.156	30
31					1.125-28	1.500	1.281					31
32	19, F				M28 x 1.0	1.344	1.281					32
34		20, 21	20	37	1.188-18	1.562	1.344					34
35					1.250-18	1.625	1.406	1.875	1.938	1.156	1.219	35
36					1.250-28	1.625	1.406					36
37	21, G				M31 x 1.0	1.469	1.406					37
39		22, 23	22		1.312-18	1.688	1.469					39
40					1.375-18	1.750	1.531	2.000	2.062	1.188	1.250	40
41					1.375-28	1.750	1.531					41
42	23, H				M34 x 1.0	1.594	1.531					42
44		24, 25	24		1.438-18	1.812	1.594					44
45				61	1.500-18	1.875	1.656					45
46					1.500-28	1.875	1.656	2.125	2.188	1.250	1.312	46
47	25, J				M37 x 1.0	1.719	1.656					47
48					1.562-18	1.938	1.719					48
49					1.625-18	2.000	1.781					49
51			28		1.750-18	2.125	1.906	2.375	2.625	1.344	1.625	51
52					1.875-16	2.250	2.031					52
53					1.906-18	2.281	2.062	2.625	3.000	1.438	1.812	53
54			32		2.000-18	2.375	2.156					54
55					2.062-16	2.469	2.219					55
56					2.062-24	2.469	2.219					56
57					2.125-16	2.500	2.281	2.875	3.250	1.562	1.938	57
58					2.125-18	2.500	2.281					58
59			36		2.250-16	2.625	2.406					59
60					2.312-16	2.719	2.469					60
61					2.375-16	2.750	2.531	3.125	3.500	1.688	2.062	61
62			40		2.500-16	2.875	2.656					62

NOTES: UNLESS OTHERWISE SPECIFIED.

1 THREADS ARE RIGHT HAND IN ACCORDANCE WITH FED-STD-H28, CLASS 2B.

③ THREADS NOTED ARE ISO METRIC, CLASS 6H.

5 TABLE 1 LISTS THE MOST USED CONNECTOR CODES. SEE SECTION 11 FOR OTHER CODES AVAILABLE AND COMPLETE CONNECTOR PART NUMBER CROSS REFERENCE.

⑥ SEE SUPPORT DATA SECTION FOR PLATING AND MODIFICATION CODE OPTIONS.

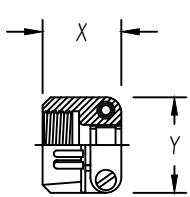
⑧ SEE SUPPORT DATA SECTION FOR TABLE V & AVAILABLE STYLES

REV | C

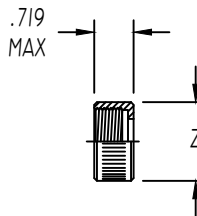


**Table 2 - Environmental / Non-Environmental Cable Entry Data**

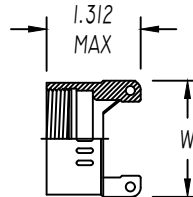
ENTRY ORDER NUMBER	ENVIRONMENTAL		NON ENVIRONMENTAL		V UNIFIED THREAD	R MAX DIM.	S MAX DIM.	T MAX DIM.	U MAX DIM.	W MAX DIM.	X MAX DIM.	Y MAX DIM.	Z MAX DIA.
	GLAND RANGE		CABLE RANGE										
	MAX	MIN	MAX	MIN									
△ 03	.250	.156	.250	.156	.500-28	N / A	.812	1.375	.812	N / A	.844	.781	.656
04	.312	.188	.312	.188	.625-24	1.031	.937	1.375	.937	.875	.844	.906	.781
06	.438	.281	.438	.281	.750-20	1.031	1.062	1.375	1.062	1.000	.906	1.094	.906
08	.562	.375	.562	.344	.875-20	1.031	1.188	1.375	1.188	1.125	.969	1.188	1.031
10	.625	.500	.625	.375	1.000-20	1.094	1.312	1.437	1.312	1.250	.969	1.281	1.156
12	.750	.500	.750	.438	1.188-18	1.219	1.562	1.437	1.562	1.375	.969	1.500	1.344
△ 14	.875	.750	.875	.719	1.250-18	N / A	N / A	N / A	N / A	1.500	N / A	N / A	N / A
16	1.000	.844	1.000	.781	1.438-18	1.219	1.750	1.562	1.750	1.625	1.062	1.719	1.594
20	1.250	.938	1.250	.750	1.750-18	1.344	2.250	1.812	2.250	1.750	1.125	2.062	1.906
24	1.375	1.000	1.375	.781	2.000-18	N / A	2.375	2.062	2.375	N / A	1.188	2.312	2.156
28	1.625	1.250	1.625	.969	2.250-16	N / A	2.625	2.062	2.625	N / A	1.719	2.719	2.406
32	1.875	1.500	1.875	1.125	2.500-16	N / A	2.812	2.188	2.812	N / A	1.781	2.969	2.656



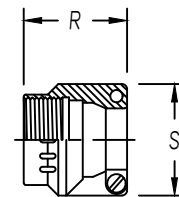
**STYLE 1** △  
 AS85049/41A CLAMP  
 (MS 3057\*\*A)



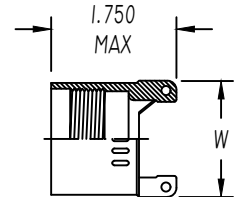
**STYLE 2** △  
 NUT



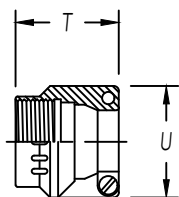
**STYLE 3** △  
 NON-ENVIRONMENTAL



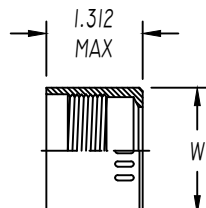
**STYLE 3** △  
 NUT ENVIRONMENTAL  
 (AS85049/1)  
 (MS 3057-\*\*B)



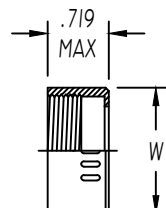
**STYLE 3** △  
 ENVIRONMENTAL



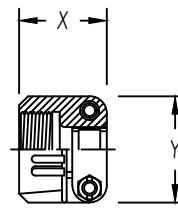
**STYLE 4** △  
 STRAIN RELIEF ENVIRONMENTAL  
 (AS85049/2)  
 (MS 3057-\*\*C)



**STYLE 4** △  
 ENVIRONMENTAL



**STYLE 4** △  
 NON-ENVIRONMENTAL



**STYLE 9** △  
 STRAIN-RELIEF CLAMP WITH TELESCOPING SCREWS

NOTES: UNLESS OTHERWISE SPECIFIED

△1 AVAILABLE ONLY ON: A\*\*01, A\*\*30, E\*\*01, E\*\*03, E\*\*04, E\*\*05, E\*\*07, E\*\*21, E\*\*30, & E\*\*33

△2 AVAILABLE ONLY ON: E\*\*15, E\*\*17, E\*\*38, E\*\*40, & E\*\*41

3. CONSULT FACTORY FOR SIZES AND INFORMATION NOT LISTED