



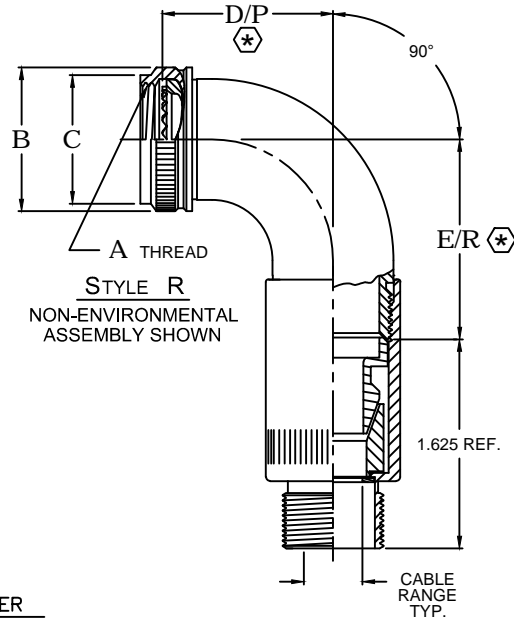
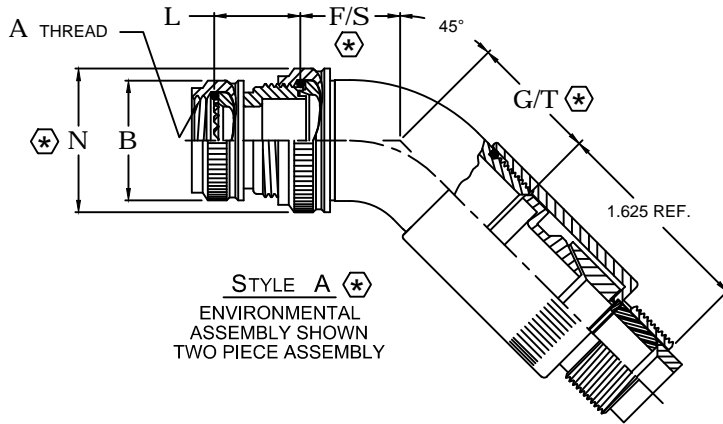
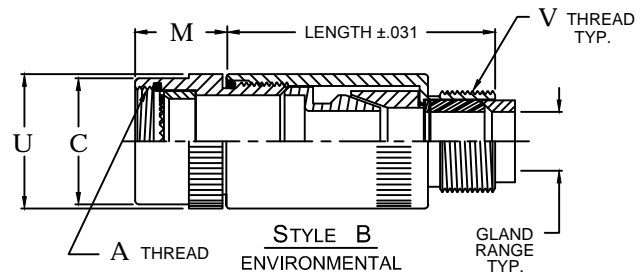
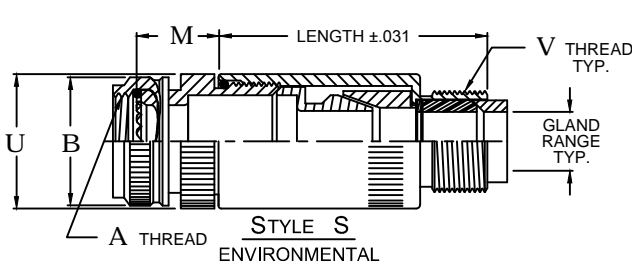
**Table 2 - Environmental / Non-Environmental Cable Entry Data**

ENTRY ORDER NUMBER	ENVIRONMENTAL GLAND RANGE		NON ENVIRONMENTAL CABLE RANGE		N MAX DIA.	P MAX DIM.	R MAX DIM.	S MAX DIM.	T MAX DIM.	U ±.031 DIA.	V UNIFIED THREAD
	MAX	MIN	MAX	MIN							
03	.250	.156	.250	.156	N/A	1.156	1.344	.875	.938	.750	.500-28
04	.312	.188	.312	.188	.734	1.219	1.406	.906	.969	.875	.625-24
06	.438	.281	.438	.281	.858	1.406	1.531	.969	1.031	1.000	.750-20
08	.562	.375	.562	.344	.984	1.531	1.656	1.031	1.094	1.125	.875-20
10	.625	.500	.625	.375	1.112	1.656	1.781	1.094	1.125	1.125	1.000-20
12	.750	.500	.750	.438	1.345	1.906	2.031	1.188	1.250	1.250	1.188-18
16	.938	.625	.938	.562	1.594	2.156	2.281	1.344	1.500	1.500	1.438-18
20	1.250	.938	1.250	.750	1.968	2.406	2.469	1.375	1.469	1.875	1.750-18
24	1.375	1.000	1.375	.781	2.219	2.656	2.719	1.500	1.594	2.125	2.000-18
28	1.625	1.250	1.625	.969	2.469	2.906	2.969	1.594	1.656	2.375	2.250-16
32	1.875	1.500	1.875	1.125	2.719	3.156	3.219	1.719	1.750	2.625	2.500-16

**Table 3**

CONN CODE NUMBER	L MAX DIM.	M MAX DIM.
18	.875	1.500
19	.875	1.500
21	.875	1.125
30	1.032	.750
32	1.094	1.500
40	.750	.750
41	.750	.750
47	.750	.750
51	.875	.750
54	.750	1.250
61	1.094	1.000
76	.750	1.125

\* DIMENSIONS D, E, F & G APPLY FOR ONE PIECE ASSEMBLY AS SHOWN IN STYLE R. DIMENSIONS N, P, R, S & T APPLY FOR TWO PIECE ASSEMBLY AS SHOWN IN STYLE A, WHEN CABLE ENTRY EXCEEDS CONNECTOR I.D.



**ASSEMBLY PART NUMBER**  
 TO ESTABLISH YOU P/N, USE THE FOLLOWING EXAMPLE

**E 41 04 S 23 08 9 B 08 51**

FUNCTION DESIGNATOR  
 E-EMI ADAPTER

CONNECTOR CODE NUMBER - TABLE 1

SERIES PART NUMBER

ADAPTER STYLE  
 B = STRAIGHT ADAPTER  
 R = 90° ADAPTER  
 A = 45° ADAPTER

ACCESSORY ORDER NUMBER-TABLE 1

CABLE ENTRY ORDER NUMBER-TABLE 2

MOD CODE

PLATING CODE NUMBER-TABLE 4

LENGTH CODE NUMBER  
 LENGTHS ARE CHOSEN IN 1/4" INCREMENTS  
 (IE 08=2.00") SEE TABLE 3 FOR MINIMUM  
 INSERT 00 FOR R & A STYLE ADAPTERS

GLAND & O'RING MATERIAL OPTION  
 B - NEOPRENE & BUNA-N  
 S - SILICONE  
 N - NONE REQUIRED (NON ENVIROMENTAL)

CABLE STRAIN RELIEF - SEE TABLE V

# Table 1 - Order Number Data

## Accessory Order Number By Connector Code & Shell Size

ORDER NUMBER	Accessories															ORDER NUMBER		
	MS3100 SERIES MIL-DTL-5015 SOLDER CONTACT	MIL-DTL-26482 SERIES 1	MIL-DTL-22992 CLASS C, J & R	MIL-DTL-38999 SERIES III & IV	MIL-DTL-38999 SERIES I & II	MIL-DTL-5015 CRIMP MIL-DTL-26482 SER 2 MIL-DTL-83723 SER III	MIL-C-81703 NAS 1599	LITTON, VEAM, CIR SERIES	MIL-C-81511 SERIES 1, 2, 3 & 4	PATT 105 PATT 603 PATT 608	A UNIFIED THREAD	B MAX DIA.	C MAX DIA.	(7) D ±.125 DIM.	E MAX DIM.		(7) F ±.125 DIM.	G MAX DIM.
01	18										.375-32	.750	.531					01
03	18										.438-27	.812	.594					03
04	18	21				8, 9				8	.438-28	.812	.594					04
05										8 & 8S	.500-20	.875	.656	1.125	1.188	.812	.875	05
06										8, A	.500-28	.875	.656					06
07											M12 x 1.0	.719	.656					07
08	10SL (C)	10				10, 11				3	.562-24	.844	.719					08
10	10SL(A,B), 12,12S(B,C)									10,10S,10SL	.625-24	1.000	.781	1.250	1.312	.875	.938	10
11										10, B	.625-28	1.000	.781					11
12											M15 x 1.0	.844	.781					12
13	12 & 12S (A)	12				12, 13					.688-24	1.062	.844					13
15	14 & 14S (-)		12							12 & 12S	.750-20	1.125	.906	1.375	1.438	.938	1.000	15
16											M18 x 1.0	.969	.906					16
18											.812-20	1.188	.969					18
19	16 & 16S (-)		14			14, 15				14 & 14S	.875-20	1.250	1.031	1.500	1.562	1.000	1.062	19
20											.875-28	1.250	1.031					20
21											M22 x 1.0	1.094	1.031					21
23											.938-20	1.312	1.094					23
24	18 (-)		16							16 & 16S	1.000-20	1.375	1.156	1.625	1.688	1.062	1.125	24
25											1.000-28	1.375	1.156					25
26											M25 x 1.0	1.219	1.156					26
28											1.062-18	1.438	1.219					28
29	20 (-)		18							20	1.125-18	1.500	1.281					29
30	20 (R)										1.125-24	1.500	1.281	1.750	1.812	1.094	1.156	30
31											1.125-28	1.500	1.281					31
32											M28 x 1.0	1.344	1.281					32
34											1.188-18	1.562	1.344					34
35	22 (-)		20							22	1.250-18	1.625	1.406	1.875	1.938	1.156	1.219	35
36											1.250-28	1.625	1.406					36
37											M31 x 1.0	1.469	1.406					37
39											1.312-18	1.688	1.469					39
40	24 (-)		22							24	1.375-18	1.750	1.531	2.000	2.062	1.188	1.250	40
41											1.375-28	1.750	1.531					41
42											M34 x 1.0	1.594	1.531					42
44											1.438-18	1.812	1.594					44
45											1.500-18	1.875	1.656					45
46											1.500-28	1.875	1.656	2.125	2.188	1.250	1.312	46
47											M37 x 1.0	1.719	1.656					47
48											1.562-18	1.938	1.719					48
49	28 (-)		24							28	1.625-18	2.000	1.781	2.375	2.625	1.344	1.625	49
51											1.750-18	2.125	1.906					51
52	32 (B,C)		28							32	1.875-16	2.250	2.031					52
53	32 (A,R)										1.906-18	2.281	2.062	2.625	3.000	1.438	1.812	53
54											2.000-18	2.375	2.156					54
55	36 (B)		32							36	2.062-16	2.469	2.219					55
56	36 (R)										2.062-24	2.469	2.219					56
57	36 (C)										2.125-16	2.500	2.281	2.875	3.250	1.562	1.938	57
58	36 (A)										2.125-18	2.500	2.281					58
59											2.250-16	2.625	2.406					59
60	40 (B)		36							40	2.312-16	2.719	2.469					60
61	40 (A,C)										2.375-16	2.750	2.531	3.125	3.500	1.688	2.062	61
62											2.500-16	2.875	2.656					62

NOTES: UNLESS OTHERWISE SPECIFIED.

- 1 THREADS ARE RIGHT HAND IN ACCORDANCE WITH FED-STD-H28, CLASS 2B.
- (2) THREADS NOTED ARE LEFT HAND, CLASS 2B.
- (3) THREADS NOTED ARE ISO METRIC, CLASS 6H.
- (4) CODE 18 SHELL SIZES ARE FOLLOWED IN PARENTHESIS BY CONNECTOR MFR CODE. SEE CONNECTOR CODE 18 CHART AT RIGHT & EXAMPLE PART NUMBER FOR DETAILS.

- 5 TABLE 1 LISTS THE MOST USED CONNECTOR CODES. SEE SECTION 11 FOR OTHER CODES AVAILABLE AND COMPLETE CONNECTOR PART NUMBER CROSS REFERENCE.
- (6) SEE SUPPORT DATA SECTION FOR PLATING AND MODIFICATION CODE OPTIONS.
- (7) ADD .25 TO "D" & "F" FOR CONNECTOR CODES 30, 32 & 61.
- (8) SEE SUPPORT DATA SECTION FOR TABLE V & AVAILABLE STYLES

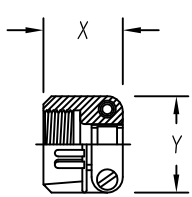
### (4) Connector Code 18 Chart

CONNECTOR CODE	CONNECTOR MANUFACTURER (MS3100, MS3101, MS3106 & MS3107)
A	AMPHENOL, CLASS A
B	BENDIX, CLASS A, E & R
C	CANNON, CLASS A, E & R
D	MFR. UNKNOWN, CLASS A, E & R
R	AMPHENOL, CLASS R
-	MFR. CODE NOT REQUIRED

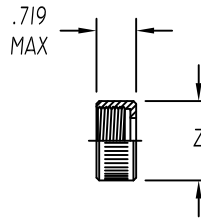


**Table 2 - Environmental / Non-Environmental Cable Entry Data**

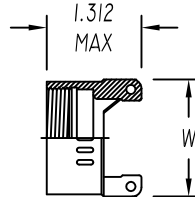
ENTRY ORDER NUMBER	ENVIRONMENTAL		NON ENVIRONMENTAL		V UNIFIED THREAD	R MAX DIM.	S MAX DIM.	T MAX DIM.	U MAX DIM.	W MAX DIM.	X MAX DIM.	Y MAX DIM.	Z MAX DIA.
	GLAND RANGE		CABLE RANGE										
	MAX	MIN	MAX	MIN									
△ 03	.250	.156	.250	.156	.500-28	N / A	.812	1.375	.812	N / A	.844	.781	.656
04	.312	.188	.312	.188	.625-24	1.031	.937	1.375	.937	.875	.844	.906	.781
06	.438	.281	.438	.281	.750-20	1.031	1.062	1.375	1.062	1.000	.906	1.094	.906
08	.562	.375	.562	.344	.875-20	1.031	1.188	1.375	1.188	1.125	.969	1.188	1.031
10	.625	.500	.625	.375	1.000-20	1.094	1.312	1.437	1.312	1.250	.969	1.281	1.156
12	.750	.500	.750	.438	1.188-18	1.219	1.562	1.437	1.562	1.375	.969	1.500	1.344
△ 14	.875	.750	.875	.719	1.250-18	N / A	N / A	N / A	N / A	1.500	N / A	N / A	N / A
16	1.000	.844	1.000	.781	1.438-18	1.219	1.750	1.562	1.750	1.625	1.062	1.719	1.594
20	1.250	.938	1.250	.750	1.750-18	1.344	2.250	1.812	2.250	1.750	1.125	2.062	1.906
24	1.375	1.000	1.375	.781	2.000-18	N / A	2.375	2.062	2.375	N / A	1.188	2.312	2.156
28	1.625	1.250	1.625	.969	2.250-16	N / A	2.625	2.062	2.625	N / A	1.719	2.719	2.406
32	1.875	1.500	1.875	1.125	2.500-16	N / A	2.812	2.188	2.812	N / A	1.781	2.969	2.656



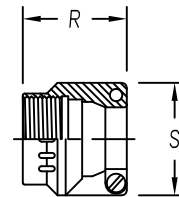
**STYLE 1** △  
 AS85049/41A CLAMP  
 (MS 3057\*\*A)



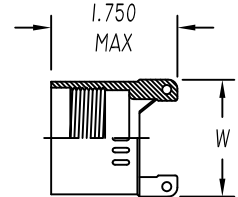
**STYLE 2** △  
 NUT



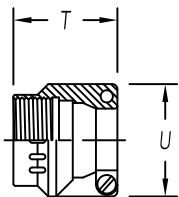
**STYLE 3** △  
 NON-ENVIRONMENTAL



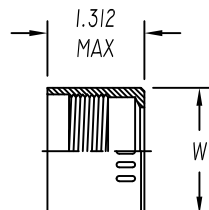
**STYLE 3** △  
 NUT ENVIRONMENTAL  
 (AS85049/1)  
 (MS 3057-\*\*B)



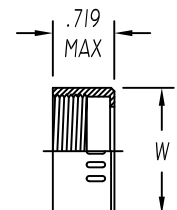
**STYLE 3** △  
 ENVIRONMENTAL



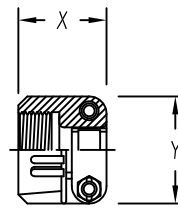
**STYLE 4** △  
 STRAIN RELIEF ENVIRONMENTAL  
 (AS85049/2)  
 (MS 3057-\*\*C)



**STYLE 4** △  
 ENVIRONMENTAL



**STYLE 4** △  
 NON-ENVIRONMENTAL



**STYLE 9** △  
 STRAIN-RELIEF CLAMP WITH TELESCOPING SCREWS

NOTES: UNLESS OTHERWISE SPECIFIED

△1 AVAILABLE ONLY ON: A\*\*01, A\*\*30, E\*\*01, E\*\*03, E\*\*04, E\*\*05, E\*\*07, E\*\*21, E\*\*30, & E\*\*33

△2 AVAILABLE ONLY ON: E\*\*15, E\*\*17, E\*\*38, E\*\*40, & E\*\*41

3. CONSULT FACTORY FOR SIZES AND INFORMATION NOT LISTED