



Table 2 - Cable Entry Data

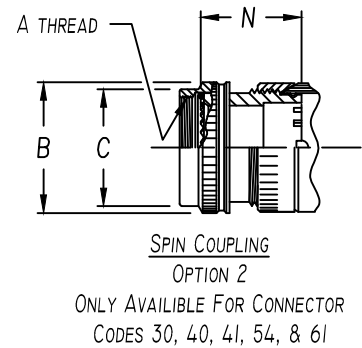
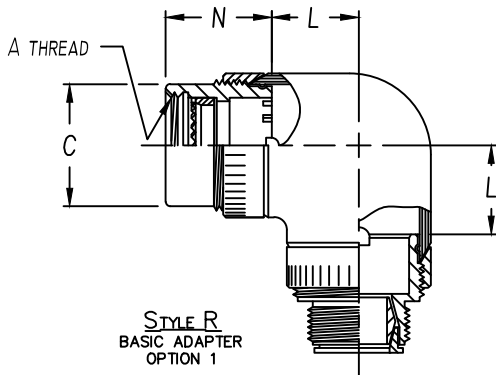
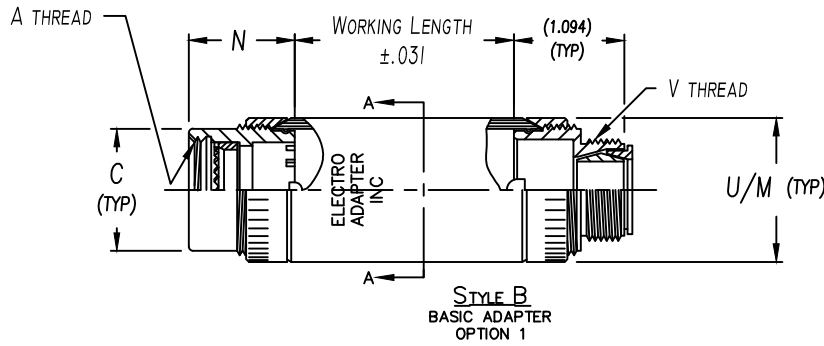
ENTRY ORDER NUMBER	ENVIRONMENTAL GLAND RANGE		NON ENVIRONMENTAL CABLE RANGE		V UNIFIED THREAD
	MAX	MIN	MAX	MIN	
03	.250	.156	.250	.156	.500-28
04	.312	.188	.312	.188	.625-24
06	.438	.281	.438	.281	.750-20
08	.562	.375	.562	.344	.875-20
10	.625	.500	.625	.375	1.000-20
12	.750	.500	.750	.438	1.188-18
16	.938	.625	.938	.562	1.438-18
20	1.250	.938	1.250	.750	1.750-18
24	1.375	1.000	1.375	.781	2.000-18
28	1.625	1.250	1.625	.969	2.250-16
32	1.875	1.500	1.875	1.125	2.500-16

WHEN MAXIMUM CABLE ENTRY EXCEEDS THE CONNECTOR INTERFACE DIAMETER, A 2 PIECE ADAPTER WILL BE SUPPLIED.

Table 3 - Length Code Data

CONN CODE NUMBER	N MAX	M ±.031 DIA. BY ACCESSORY ORDER NUMBER			
		1.250	1.469	1.688	1.875
18	1.250	01 - 19	24 - 30	35, 40	49
19	1.188	04 - 19	24, 29	35, 40	49
21	1.000	04 - 23	28, 34	39, 44	-
30	1.375	15, 19	24, 29	35, 44	48
32	1.625	15, 19	24, 29	35, 40	49
40	1.062	07 - 21	26, 32	37, 47	-
41	1.000	04 - 23	28, 34	39, 44	-
47	1.000	04 - 23	28, 34	39, 44	-
51	1.000	04 - 23	28, 34	39, 44	-
54	.719	05 - 19	24 - 34	39, 44	51
61	.875	06 - 25	31	36, 41	46
76	1.000	04 - 23	28, 34	39, 44	-
		.750	.875	1.000	1.125

L ±.062 DIA. BY ACCESSORY ORDER NUMBER



ASSEMBLY PART NUMBER

TO ESTABLISH YOU P/N, USE THE FOLLOWING EXAMPLE

E 41 03 S 23 08 9 08 1 51

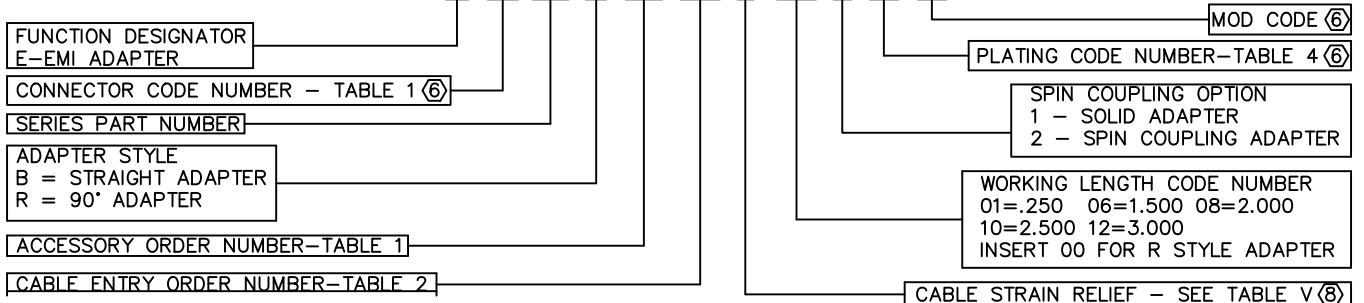


Table 1 - Order Number Data

Accessory Order Number By Connector Code & Shell Size

ORDER NUMBER	MS3100 SERIES	MIL-DTL-5015 SOLDER CONTACT	MIL-DTL-26482 SERIES 1	MIL-DTL-22992 CLASS C, J & R	MIL-DTL-38999 SERIES III & IV	MIL-DTL-38999 SERIES I & II	MIL-DTL-5015 CRIMP	MIL-DTL-26482 SER 2	MIL-DTL-83723 SER III	MIL-C-81703 NAS 1599	LITTON VEAM CIR SERIES	MIL-C-81511 SERIES 1, 2, 3 & 4	PATT 105, PATT 603	ORDER NUMBER
	18 ④	21	32 ②	40 ③	41	54	64	61	76	A UNIFIED THREAD	B MAX DIA.	C MAX DIA.		
01	8S (B)													01
03	8S (A)													03
04	8S (C)	8			8, 9						8			04
05						8 & 8S								05
06	10S (-)									8, A				06
07				9, A										07
08	10SL (C)	10			10, 11		3				10			08
10	10SL(A,B), 12, 12S(B,C)					10, 10S, 10SL		12						10
11									10, B					11
12				11, B										12
13	12 & 12S (A)	12			12, 13					12				13
15	14 & 14S (-)		12			12 & 12S	7	14						15
16				13, C										16
18		14			14, 15						14			18
19	16 & 16S (-)		14			14 & 14S	12	16						19
20									14, D					20
21				15, D										21
23		16			16, 17					16				23
24	18 (-)		16			16 & 16S	19	18						24
25									16, E					25
26				17, E										26
28		18			18, 19	18	27			18				28
29	20 (-)		18					20						29
30	20 (R)													30
31									18, F					31
32				19, F										32
34		20			20, 21	20	37			20				34
35	22 (-)		20					22						35
36									20, G					36
37				21, G										37
39		22			22, 23	22				22				39
40	24 (-)		22							24				40
41									22, H					41
42				23, H										42
44		24			24, 25	24				24				44
45							61							45
46									24, J					46
47				25, J										47
48														48
49	28 (-)		24							28				49
51						28								51
52	32 (B,C)		28					32						52
53	32 (A,R)													53
54						32								54
55	36 (B)		32					36						55
56	36 (R)													56
57	36 (C)													57
58	36 (A)													58
59						36								59
60	40 (B)		36					40						60
61	40 (A,C)													61
62						40								62

NOTES: UNLESS OTHERWISE SPECIFIED.

- 1 THREADS ARE RIGHT HAND IN ACCORDANCE WITH FED-STD-H28, CLASS 2B.
- ② THREADS NOTED ARE LEFT HAND, CLASS 2B.
- ③ THREADS NOTED ARE ISO METRIC, CLASS 6H.
- ④ CODE 18 SHELL SIZES ARE FOLLOWED IN PARENTHESIS BY CONNECTOR MFR CODE. SEE CONNECTOR CODE 18 CHART AT RIGHT & EXAMPLE PART NUMBER FOR DETAILS.

- 5 TABLE 1 LISTS THE MOST USED CONNECTOR CODES. SEE SECTION 11 FOR OTHER CODES AVAILABLE AND COMPLETE CONNECTOR PART NUMBER CROSS REFERENCE.
- ⑥ SEE SUPPORT DATA SECTION FOR PLATING AND MODIFICATION CODE OPTIONS.
- ⑦ ADD .25 TO "N" FOR CONNECTOR CODES 30, 32 & 61.
- ⑧ SEE SUPPORT DATA SECTION FOR TABLE V & AVAILABLE STYLES

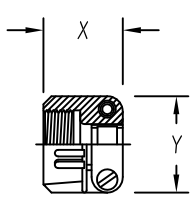
④ Connector Code 18 Chart

CONNECTOR CODE	CONNECTOR MANUFACTURER (MS3100, MS3101, MS3106 & MS3107)
A	AMPHENOL, CLASS A
B	BENDIX, CLASS A, E & R
C	CANNON, CLASS A, E & R
D	MFR. UNKNOWN, CLASS A, E & R
R	AMPHENOL, CLASS R
-	MFR. CODE NOT REQUIRED

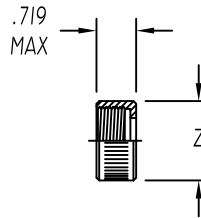


Table 2 - Environmental / Non-Environmental Cable Entry Data

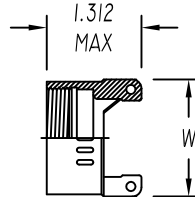
ENTRY ORDER NUMBER	ENVIRONMENTAL		NON ENVIRONMENTAL		V UNIFIED THREAD	R MAX DIM.	S MAX DIM.	T MAX DIM.	U MAX DIM.	W MAX DIM.	X MAX DIM.	Y MAX DIM.	Z MAX DIA.
	GLAND RANGE		CABLE RANGE										
	MAX	MIN	MAX	MIN									
△ 03	.250	.156	.250	.156	.500-28	N / A	.812	1.375	.812	N / A	.844	.781	.656
04	.312	.188	.312	.188	.625-24	1.031	.937	1.375	.937	.875	.844	.906	.781
06	.438	.281	.438	.281	.750-20	1.031	1.062	1.375	1.062	1.000	.906	1.094	.906
08	.562	.375	.562	.344	.875-20	1.031	1.188	1.375	1.188	1.125	.969	1.188	1.031
10	.625	.500	.625	.375	1.000-20	1.094	1.312	1.437	1.312	1.250	.969	1.281	1.156
12	.750	.500	.750	.438	1.188-18	1.219	1.562	1.437	1.562	1.375	.969	1.500	1.344
△ 14	.875	.750	.875	.719	1.250-18	N / A	N / A	N / A	N / A	1.500	N / A	N / A	N / A
16	1.000	.844	1.000	.781	1.438-18	1.219	1.750	1.562	1.750	1.625	1.062	1.719	1.594
20	1.250	.938	1.250	.750	1.750-18	1.344	2.250	1.812	2.250	1.750	1.125	2.062	1.906
24	1.375	1.000	1.375	.781	2.000-18	N / A	2.375	2.062	2.375	N / A	1.188	2.312	2.156
28	1.625	1.250	1.625	.969	2.250-16	N / A	2.625	2.062	2.625	N / A	1.719	2.719	2.406
32	1.875	1.500	1.875	1.125	2.500-16	N / A	2.812	2.188	2.812	N / A	1.781	2.969	2.656



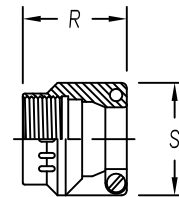
STYLE 1 △
 AS85049/41A CLAMP
 (MS 3057**A)



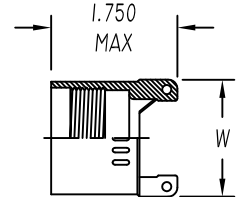
STYLE 2 △
 NUT



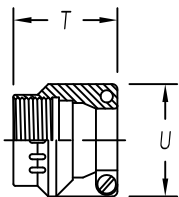
STYLE 3 △
 NON-ENVIRONMENTAL



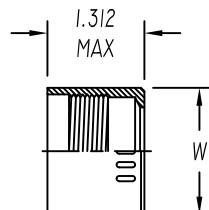
STYLE 3 △
 NUT ENVIRONMENTAL
 (AS85049/1)
 (MS 3057-**B)



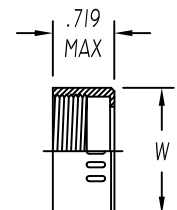
STYLE 3 △
 ENVIRONMENTAL



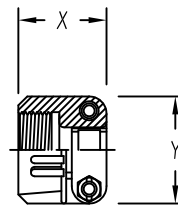
STYLE 4 △
 STRAIN RELIEF ENVIRONMENTAL
 (AS85049/2)
 (MS 3057-**C)



STYLE 4 △
 ENVIRONMENTAL



STYLE 4 △
 NON-ENVIRONMENTAL



STYLE 9 △
 STRAIN-RELIEF CLAMP WITH TELESCOPING SCREWS

NOTES: UNLESS OTHERWISE SPECIFIED

△1 AVAILABLE ONLY ON: A**01, A**30, E**01, E**03, E**04, E**05, E**07, E**21, E**30, & E**33

△2 AVAILABLE ONLY ON: E**15, E**17, E**38, E**40, & E**41

3. CONSULT FACTORY FOR SIZES AND INFORMATION NOT LISTED