

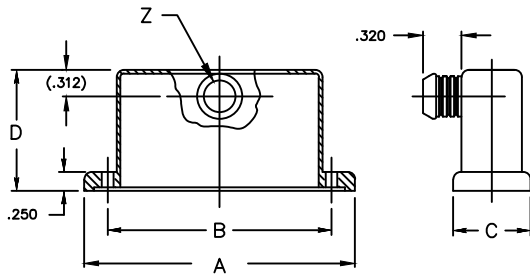


ELECTRO ADAPTER INC.
 CHATSWORTH, CALIFORNIA, USA 91311
 PHONE (818) 998-1198
 FAX (818) 709-5773

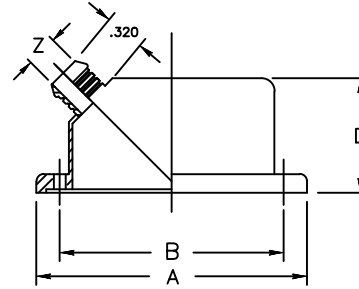
**SECTION 3 - RECTANGULAR ADAPTER
 EMI / RFI , BAND TERMINATION ,
 STRAIGHT , 45° , 90° SIDE , 90° FRONT
 MIL - DTL - 24308 , D-SUB**

901-813

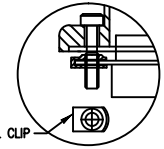
SHEET 1 OF 1



STYLE F

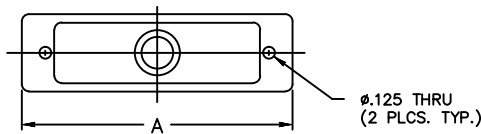


STYLE A



STAINLESS STEEL CLIP

SEE EXAMPLE PART NUMBER
 'K' OPTION SOCKET SCREW
 AND RETAINING CLIPS

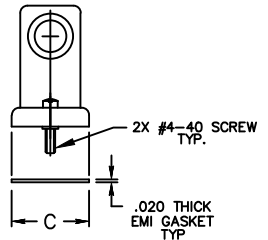
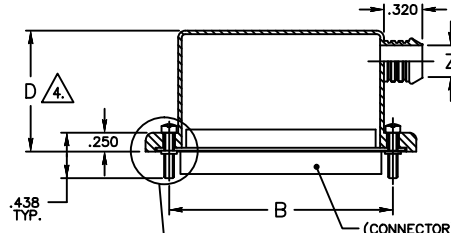
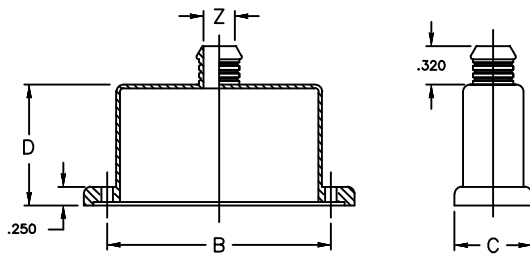


STYLE S



STYLE R

SHOWN WITH SCREWS



NYLON WASHER Δ
 SEE PART NUMBER

Example Part Number

901-813S1504156*

BASIC ADAPTER NO.				ADAPTER STYLE		HEIGHT CODE		PLATING CODE NUMBER	
				S = STRAIGHT ADAPTER R = 90° SIDE ADAPTER A = 45° ADAPTER F = 90° FRONT ADAPTER		HEIGHT CODE		CODE 56 - ELECTROLESS NICKEL, PER SAE AMS-C-26074, WITH IRIDITE CONVERSION. FOR ADDITIONAL FINISH, SEE CATALOG TABLE 4	
CONNECTOR SHELL SIZE				ENTRY CODE		HEIGHT CODE			
SHELL SIZE	A ±.030	B ±.005	C ±.030	ENTRY CODE	ϕZ	HEIGHT CODE	D ±.03		
9	1.366	.984	.640	0 1	.160	BLANK	.785 Δ		
15	1.694	1.312	.640	0 2	.190	0	1.000		
25	2.241	1.852	.640	0 3	.220	1	1.25		
37	2.882	2.500	.640	0 4	.260	2	1.50		
50	2.778	2.406	.750	0 5	.275	3	1.75		
104	2.882	2.500	.812	0 6	.285	4	2.00		
				0 7	.350				
				0 8	.490				

- NOTES: UNLESS OTHERWISE SPECIFIED.
- ASSEMBLY IDENTIFICATION PER MIL-STD-1285.
 - MATERIAL: BACKSHELL: ALUMINUM ALLOY.
GASKET: EMI: ALUMINUM WEAVE-NEOPRENE IMPREGNATED.
 - Δ SCREWS ARE CAPTIVATED WITH NYLON WASHERS.
 - Δ MIN HEIGHT CODE IS '0' FOR 90° BACKSHELLS