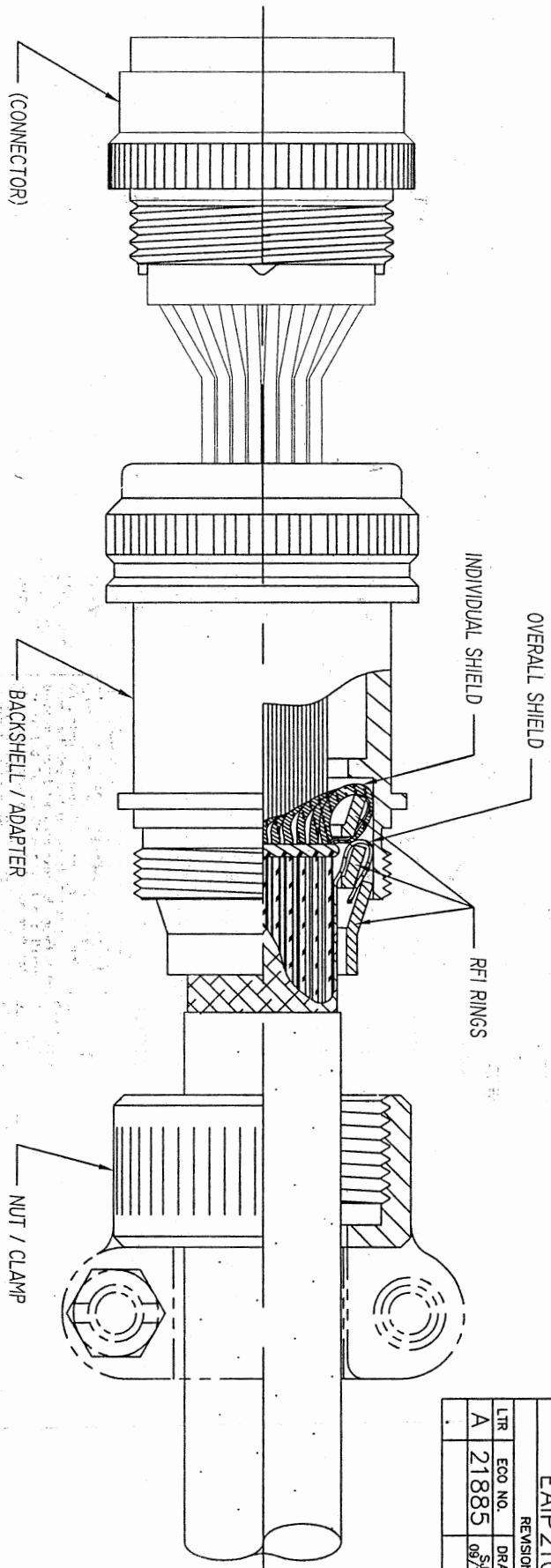


PART NO.			
EAI P2100			
REVISIONS			
LTR	ECO NO.	DRAWN	APPR
A	21885	5/02/85	5/15/85



SUGGESTED ASSEMBLY PROCEDURES

- 1: PLACE ADAPTER COMPONENTS ON CABLE IN SEQUENCE AS SHOWN.
2. CUT INDIVIDUAL AND OVERALL CONDUCTOR SHIELD, ALLOWING ADDITIONAL ALL CONDUCTOR LENGTH WHEN UTILIZING CONDUCTOR WITH FRONT INSERTABLE CONTACTS.
3. UNITE INDIVIDUAL SHIELDS, PLACE EVENLY THROUGH AND FEED BACK OVER FIRST RFI RING AS SHOWN, TEMPORARILY SPOT TIE OR TAPE. TRIM EXCESS SHIELDING.
4. UNITE OVERALL SHIELD AND PLACE EVENLY THROUGH AND FOLD BACK OVER SECOND RFI RING AS SHOWN,, TEMPORARILY SPOT TIE OR TAPE, TRIM EXCESS SHIELDING.
5. PUSH SECOND RFI RING OVER FIRST RFI RING FORWARD UNTIL SHIELDS ARE CAPTURED BETWEEN FIRST AND SECOND RFI RINGS. IF 3 RING VERSION IS ORDER, PUSH THE THIRD RING OVER THE SECOND RING AND PUSH INTO REAR END OF SLEEVE AS SHOWN.
6. ENGAGE NUT / CLAMP AND TIGHTEN SECURELY.

**UNCONTROLLED COPY**

The information disclosed herein is the property of, and a proprietary item originated by ELECTRO ADAPTER, INC., who reserves all patent, proprietary design, use, sale, manufacturing and reproduction rights thereto; except for uses expressly granted to Government and items which are vendor parts, disclosure shall not be made without written consent from ELECTRO ADAPTER, INC.

The information disclosed herein is the property of, and a proprietary item originated by ELECTRO ADAPTER, INC., who reserves all patent, proprietary design, use, sale, manufacturing and reproduction rights thereto; except for uses expressly granted to the United States Government and items which are vendor parts, disclosure shall not be made without written consent from ELECTRO ADAPTER, INC.

UNLESS OTHERWISE SPECIFIED  
DIMENSIONS ARE IN INCHES

TOLERANCES: ANGLES	.XX	DECIMALS	± .06
	± 2'		± .031

DRAWN	AP	DATE	11/01/85
CHKD	LEM	DATE	11/01/85
APVD	DT	DATE	11/02/85
DT	DT	DATE	11/02/85

**ELECTRO ADAPTER, INC.**  
CHAITSWORTH, CA. 91311-6189

DRAWING TITLE  
ASSEMBLY PROCEDURES  
FOR 2 / 3 RING TERMINATION  
(REF EAI 173\*\* & E\*\*21 SERIES ADAPTERS)

SIZE	A	CAGE CODE	31461	DRAWING NUMBER	EAI P2100
SCALE	NONE				

DO NOT SCALE DRAWING

RELEASED DATE

SHEET 1 OF 1