

Example Part Number

901-778-1-57*C

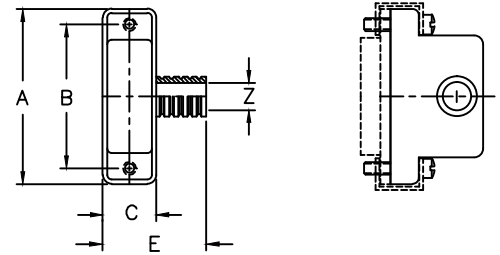
BASIC ADAPTER NO.

PLATING CODE NUMBER
 CODE 57 - ELECTROLESS NICKEL PER
 MIL-C-26074, CLASS 3 OR 4
 GRADE B
 FOR ADDITIONAL FINISH OPTIONS,
 SEE CATALOG TABLE 4.

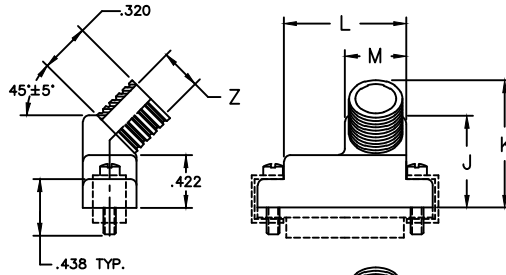
ADD 'C' FOR ADAPTER SUPPLIED WITH SCREW
 RETENTION CLIPS, OMIT IF NOT REQUIRED.

JACKSCREW TYPE OPTION
 F = 2 MALE FILLISTER
 H = 2 MALE HEX SOCKET
 J = 2 FEMALE JACKPOST
 OMIT IF JACKSCREWS NOT REQUIRED

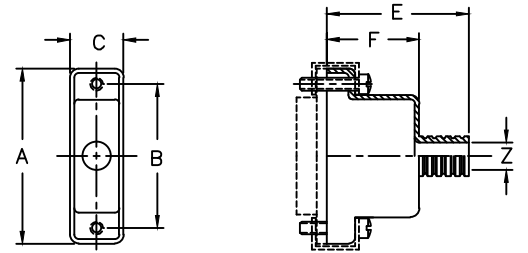
DASH NUMBER											
DASH NUMBER	SHELL SIZE	A MAX	B ±.010	C ±.010	E ±.020	F ±.010	J ±.031	K ±.031	L ±.010	M ±.010	Z ±.010
1	37	1.485	1.265	.360	N/A	N/A	.678	.900	1.100	.450	.275
2	37	1.485	1.265	.360	N/A	N/A	.678	.900	1.100	.450	.275
3	9	.785	.565	.360	.680	N/A	N/A	N/A	N/A	N/A	.160
4	15	.935	.715	.360	.802	.492	N/A	N/A	N/A	N/A	.190
5	37	1.485	1.265	.360	.982	.672	N/A	N/A	N/A	N/A	.285
6	9	.785	.565	.360	.752	.442	N/A	N/A	N/A	N/A	.160
7	25	1.185	.965	.360	.680	N/A	N/A	N/A	N/A	N/A	.275
8	15	.935	.715	.360	.680	N/A	N/A	N/A	N/A	N/A	N/A
9	21	1.085	.865	.360	.680	N/A	N/A	N/A	N/A	N/A	N/A
10	37	1.485	1.265	.360	N/A	N/A	.678	N/A	1.100	N/A	N/A



-3 & -7

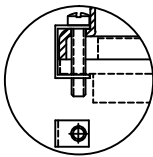


-2

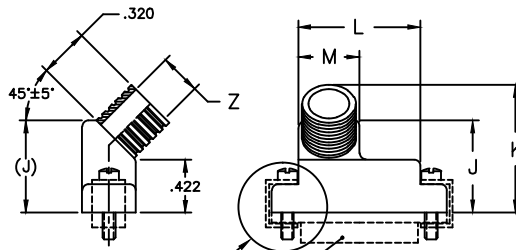


-4, -5 & -6

3. NYLON WASHER
 SEE PART NUMBER



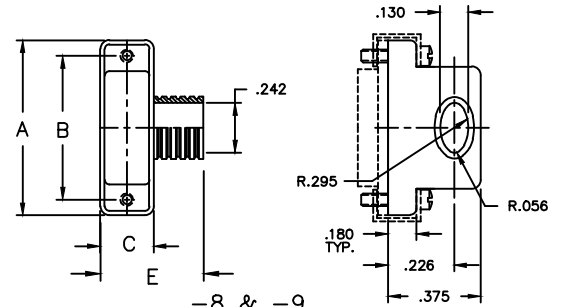
3. RETENTION CLIP
 SEE PART NUMBER



3. SEE DETAIL

(CONNECTOR)

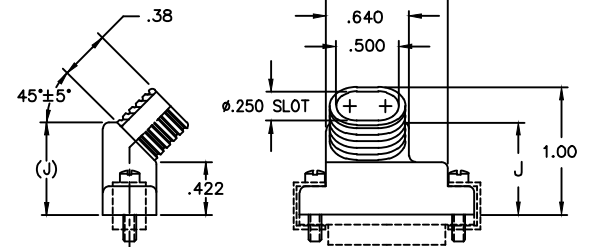
-1



-8 & -9

NOTES: UNLESS OTHERWISE SPECIFIED.

- ASSEMBLY IDENTIFICATION PER MIL-STD-1285
- MATERIAL: ALUMINUM ALLOY.
- SCREWS CAPTIVATED WITH NYLON WASHERS STANDARD, NOT SUPPLIED WITH 'C' OPTION.
- CONSULT FACTORY FOR ADAPTERS THAT MATE WITH /6, /7, /8 & 9 CLASS P (PLASTIC SHELL CONNECTORS).



-10

