

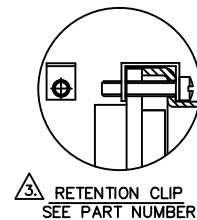
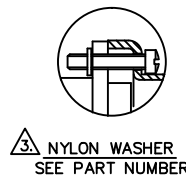
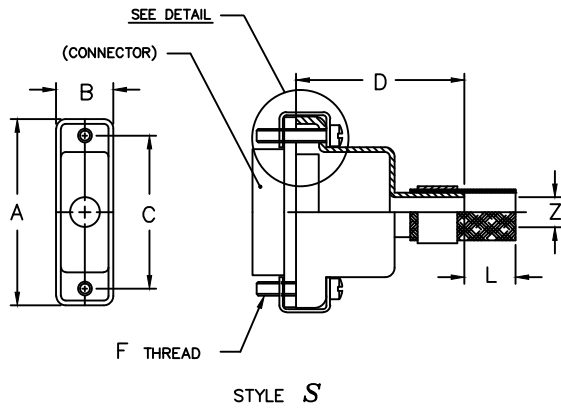
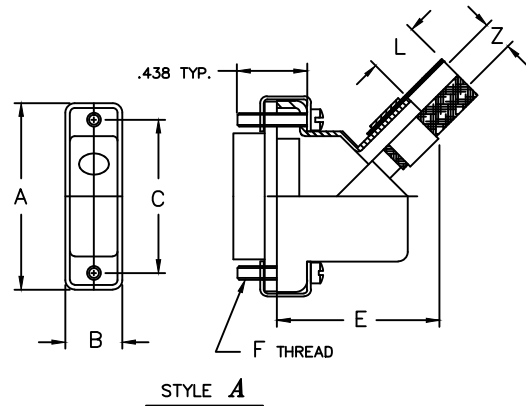
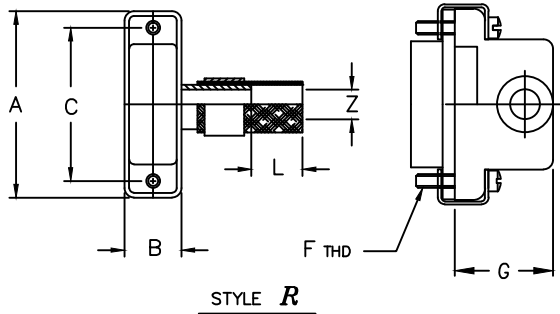


**ELECTRO ADAPTER INC.**  
 CHATSWORTH, CALIFORNIA, USA 91311  
 PHONE (818) 998-1198  
 FAX (818) 709-5773

**SECTION 3 - RECTANGULAR ADAPTER  
 MAGNEFORMED SHIELD TERMINATION  
 STRAIGHT, 45°, & 90° FRONT ENTRY  
 MIL - DTL - 83513, /1, /2, /3, & /4, MICRO D**

**901-726**

SHEET 1 OF 1



*Example Part Number*  
**901-726S25030655\*C**

BASIC ADAPTER NO.

ADAPTER STYLE  
 S - STRAIGHT ADAPTER  
 A - 45° ADAPTER  
 R - 90° ADAPTER

CONNECTOR ORDER NUMBER							
SHELL SIZE	A	B	C	D	E	F	G
	±.010	±.010	±.010	±.020	MAX	UNIFIED THD	±.031
0 9	.775	.360	.565	.750	1.00	2-56UNC-2A	.607
1 5	.925	.360	.715	.880	1.03	2-56UNC-2A	.634
2 1	1.075	.360	.865	1.000	1.05	2-56UNC-2A	.677
2 5	1.175	.360	.965	1.060	1.09	2-56UNC-2A	.718
3 1	1.325	.360	1.115	1.120	1.13	2-56UNC-2A	.726
3 7	1.475	.360	1.265	1.160	1.16	2-56UNC-2A	.744
5 1	1.425	.400	1.215	1.190	1.25	2-56UNC-2A	.828
1 0 0	2.160	.450	1.800	1.250	1.32	4-40UNC-2A	.948

CABLE ENTRY ORDER NUMBER	
ENTRY NUMBER	ØZ
	±.010
0 1	.125
0 2	.156
0 3	.188
0 4	.219
0 5	.250
0 6	.281
0 7	.312
0 8	.344
0 9	.375

PLATING CODE NUMBER  
 CODE 55 - CADMIUM PER QQ-P-416, TYPE II, CLASS 3, OVER ELECTROLESS NICKEL PER MIL-C-26074 CLASS 3 OR 4, GRADE B.  
 CODE 56 - ELECTROLESS NICKEL PER MIL-C-26074, CLASS 4, GRADE A. FOR ADDITIONAL FINISH OPTIONS, SEE CATALOG TABLE 4.

LENGTH CODE "L"  
 LENGTH IN 1 INCH INCREMENTS  
 6 INCH MINIMUM ORDER LENGTH  
 00 - IF SHIELD NOT REQUIRED

JACKSCREW TYPE  
 F = 2 MALE FILLISTER  
 H = 2 MALE HEX SOCKET  
 J = 2 FEMALE JACKPOST  
 OMIT IF JACKSCREWS NOT REQUIRED

ADD 'C' FOR ADAPTER SUPPLIED WITH SCREW RETENTION CLIPS, OMIT IF NOT REQUIRED.

NOTES: UNLESS OTHERWISE SPECIFIED.

- ASSEMBLY IDENTIFICATION PER MIL-STD-1285.
- MATERIAL: ADAPTER - ALUMINUM ALLOY.  
HARDWARE - SST.  
BRAID - TINNED COPPER.

3. SCREWS CAPTIVATED WITH NYLON WASHERS STANDARD, NOT SUPPLIED WITH 'C' OPTION.
4. CONSULT FACTORY FOR ADAPTERS THAT MATE WITH /6, /7, /8 & /9 CLASS P (PLASTIC SHELL CONNECTORS).