



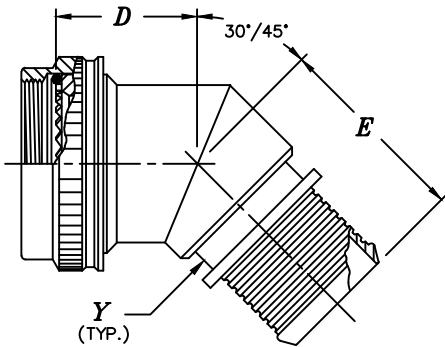
ELECTRO ADAPTER, INC.
 CHATSWORTH, CALIFORNIA, USA 91311
 PHONE: (818) 998-1198
 FAX: (818) 709-5773
 WEB SITE: www.electro-adapter.com

EMP BAND ADAPTER

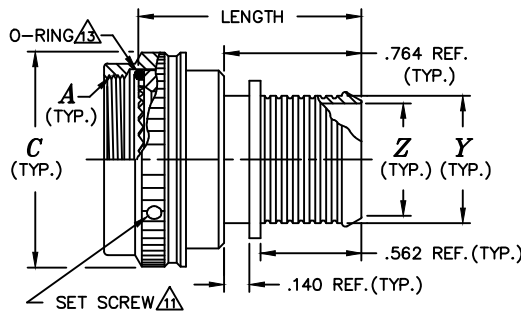
ENTRY SPECIFICATION SHEET *

SPECIFICATION CONTROL DRAWING

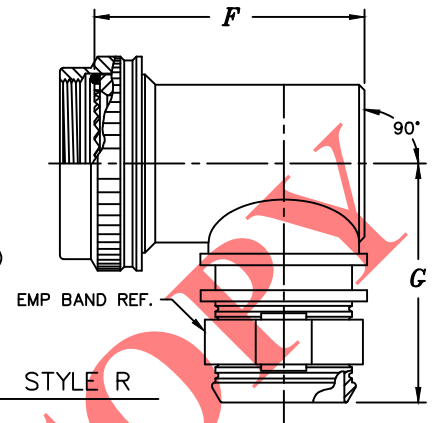
217



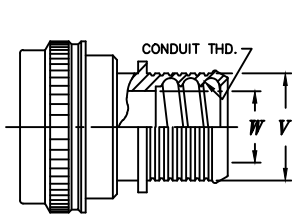
STYLE A, F OR G
SEE PART NUMBER



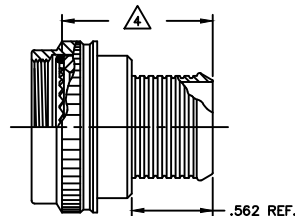
STYLE S



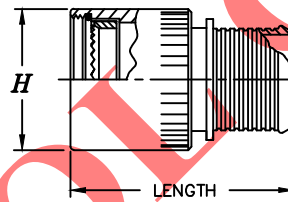
STYLE R



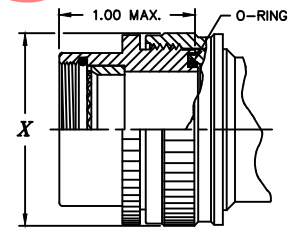
MODIFICATION C
(HELICAL CONDUIT THREAD)



MODIFICATION Z
(LESS BOOT GROOVE)



STYLE B



2 PIECE

Example Part Number

21741S161030855H

BASIC ADAPTER NUMBER

STYLE
 S = STRAIGHT F = 30°
 A = 45° G = 60°
 R = 90° B = BASIC

ORDER NO. PER TABLE II

MODIFICATION CODE
 S = SELF LOCKING ROUND COUPLING.
 Z = LESS BOOT GROOVE, OMIT FOR STANDARD BOOT GROOVE
 C = HELICAL CONDUIT THREAD

TABLE - CONNECTOR CODE

MILITARY SPECIFICATION	SERIES	CODE NO.
MIL-DTL-5015D	3100	1 8
MIL-DTL-83723	II	1 9
MIL-DTL-26482	1	2 1
MIL-DTL-26482	1 (07)	2 4
MIL-DTL-28840	-	3 0
MIL-DTL-22992	-	3 2
MIL-DTL-38999	III & IV	40
MIL-DTL-38999	I & II	41
LN 29729, PATT 615, PAN 6433-2	-	47
MIL-DTL-26500	(ALUMINUM)	5 1
MIL-DTL-5015G	3400	54
MIL-C-81703	3	54
MIL-DTL-83723	I	54
MIL-DTL-26482	2	54
MIL-DTL-83723	III	54
NAS1599	-	54
MIL-C-81511	1, 2, 3 & 4	6 1
PATT 105, PATT 603, PATT 608	-	76

TABLE III - CABLE/HARNESS ENTRY DATA

ENTRY ORDER NO.	EMP BAND			HELICAL CONDUIT		
	Z	Y	X	CONDUIT THREAD SIZE	W	V
0 2	.125	.209	N/A	N/A	N/A	N/A
0 3	.188	.271	N/A	N/A	N/A	N/A
0 4	.250	.334	N/A	N/A	N/A	N/A
0 5	.312	.396	.734	0188	.188	.413
0 6	.375	.459	.734	0281	.281	.507
0 7	.438	.521	.858	0312	.312	.531
0 8	.500	.584	.858	0375	.375	.603
0 9	.562	.646	N/A	0438	.438	.664
1 0	.625	.709	1.112	0500	.500	.743
1 2	.750	.834	1.345	0625	.625	.863
1 4	.875	.959	1.345	N/A	N/A	N/A
1 6	1.000	1.084	1.594	0750	.750	1.023
1 8	1.125	1.209	1.594	0875	.875	1.166
1 9	1.188	1.209	1.594	N/A	N/A	N/A
2 0	1.250	1.334	1.969	1000	1.000	1.319
2 2	1.375	1.459	2.219	N/A	N/A	N/A
2 4	1.500	1.584	2.219	1250	1.250	1.632

PLATING CODE NUMBER

55 = CADMIUM, OLIVE DRAB, PER SAE-AMSQQ-P-416, TYPE II, CLASS 3, OVER ELECTROLESS NICKEL PER AMS-C-26074, CLASS 3 OR 4, GRADE B
 56 = ELECTROLESS NICKEL PER SAE-AMS-2404F, WITH IRIDITE CONVERSION
 FOR ADDITIONAL FINISH OPTIONS, SEE CATALOG TABLE 4.

LENGTH CODE NUMBER

SELECT LENGTH IN 1/4" INCREMENTS (ie; 08=2.00", 09=2.25", etc.)
 00 FOR 45° & 90° ADAPTERS (STYLES A & R)

MIN. AVAIL. LENGTH	CONNECTOR CODES (TABLE I)
1.250	18, 21, 40, 41, 47, 51, 52, 54, 55, 71
1.500	24, 30, 32, 61, 64

TERMINATION NUMBER

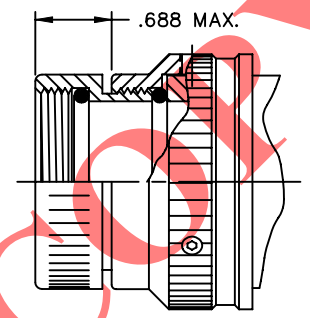
- 1 = ADAPTER ONLY
- 4 = ADAPTER w/ 1/4" EMP BAND (REF. 214L0002)
- 5 = ADAPTER w/ 1/4" EMP BAND AND SHRINK BOOT
- 6 = ADAPTER w/ 1/8" EMP BAND (ENTRY 13-24 CUSTOMER SUPPLIED)
- 7 = ADAPTER w/ 1/8" EMP BAND (ENTRY 13-24 CUSTOMER SUPPLIED)
- 8 = ADAPTER w/ 1/8" EMP BAND (REF. 214L0005)
- 9 = ADAPTER w/ 1/4" EMP BAND (A10086)

* THIS DOCUMENT INCOMPLETE WITHOUT "INTERFACE SPECIFICATION SHEET".



TABLE II - CONNECTOR CODE 18
MIL-C-5015D, 3100 SERIES

ORDER NO.	SHELL SIZE	MFR. CODE △	A UNIFIED THD. CLASS 2B	C MAX. DIA.	D MAX.	E MAX. △	F MAX.	G MAX. △/△	BAND MAX. 1 PIECE ENTRY	MOD. C MAX. 1 PIECE ENTRY
08B	8S	B	.375-32	.719	.68	1.15	.94	1.28	0 4	0 5
08C	8S	C	.438-28	.719	.69	1.16	1.00	1.28	0 5	0 7
08A	8S	A	.438-27	.719	.69	1.16	1.00	1.28	0 5	0 7
08D	8S	D	△	.719	.69	1.16	1.00	1.28	0 5	0 7
10-	10S	-	.500-28	.781	.70	1.17	1.06	1.31	0 6	0 8
11C	10SL	C	.562-24	.844	.72	1.19	1.13	1.34	0 7	0 9
11A	10SL	A	.625-24	.906	.73	1.20	1.19	1.38	0 8	1 0
11B	10SL	B	.625-24	.906	.73	1.20	1.19	1.38	0 8	1 0
11D	10SL	D	△	.906	.73	1.20	1.19	1.38	0 8	1 0
12B	12,12S	B	.625-24	.906	.73	1.20	1.19	1.38	0 8	1 0
12C	12,12S	C	.625-24	.906	.73	1.20	1.19	1.38	0 8	1 0
12A	12,12S	A	.688-24	.969	.74	1.21	1.25	1.41	0 9	1 0
12D	12,12S	D	△	.969	.74	1.21	1.25	1.41	0 9	1 0
14-	14,14S	-	.750-20	1.031	.76	1.23	1.31	1.44	1 0	1 2
16-	16,16S	-	.875-20	1.219	.78	1.25	1.44	1.53	1 2	1 6
18-	18	-	1.000-20	1.344	.79	1.26	1.50	1.59	1 3	1 6
20-	20	-	1.125-18	1.469	.83	1.30	1.69	1.66	1 6	2 0
20R	20	R	1.125-24	1.469	.83	1.30	1.69	1.66	1 6	2 0
20D	20	D	△	1.469	.83	1.30	1.69	1.66	1 6	2 0
22-	22	-	1.250-18	1.594	.86	1.33	1.81	1.72	1 8	2 0
24-	24	-	1.375-18	1.719	.89	1.36	1.94	1.78	2 0	2 4
28-	28	-	1.625-18	1.969	.91	1.38	2.06	1.88	2 2	2 4
32B	32	B	1.875-16	2.219	.96	1.43	2.31	2.00	2 4	2 4
32C	32	C	1.875-16	2.219	.96	1.43	2.31	2.00	2 4	2 4
32A	32	A	1.906-18	2.219	.96	1.43	2.31	2.00	2 4	2 4
32R	32	R	1.906-18	2.219	.96	1.43	2.31	2.00	2 4	2 4
32D	32	D	△	2.219	.96	1.43	2.31	2.00	2 4	2 4
36B	36	B	2.062-16	2.469	1.01	1.48	2.56	2.13	2 4	2 4
36R	36	R	2.062-20	2.469	1.01	1.48	2.56	2.13	2 4	2 4
36C	36	C	2.125-16	2.469	1.01	1.48	2.56	2.13	2 4	2 4
36A	36	A	2.125-18	2.469	1.01	1.48	2.56	2.13	2 4	2 4
36D	36	D	△	2.469	1.01	1.48	2.56	2.13	2 4	2 4
40B	40	B	2.312-16	2.719	1.07	1.54	2.81	2.25	2 4	2 4
40A	40	A	2.375-16	2.719	1.07	1.54	2.81	2.25	2 4	2 4
40C	40	C	2.375-16	2.719	1.07	1.54	2.81	2.25	2 4	2 4
40D	40	D	△	2.719	1.07	1.54	2.81	2.25	2 4	2 4
44A	44	A	2.625-16	2.969	1.12	1.59	3.06	2.38	2 4	2 4
44C	44	C	2.625-16	2.969	1.12	1.59	3.06	2.38	2 4	2 4
44D	44	D	△	2.969	1.12	1.59	3.06	2.38	2 4	2 4
48C	48	C	2.812-18	3.219	1.17	1.64	3.31	2.50	2 4	2 4
48A	48	A	2.875-16	3.219	1.17	1.64	3.31	2.50	2 4	2 4
48D	48	D	△	3.219	1.17	1.64	3.31	2.50	2 4	2 4



MFR. CODE D △ △
 (CODE 18 ONLY)

- NOTES:
- ASSEMBLY IDENT. PER MIL-STD-130.
 - MATERIAL: COMPONENTS - ALUM. ALLOY
O-RING - SILICONE
 - △ "2 PIECE" CONFIG. SUPPLIED WHEN CABLE ENTRY DIA. EXCEEDS CONN. INSERT DIA..
 - △ DIMENSIONS INDICATED WILL BE .20" LESS WHEN ORDERED WITH MOD. CODE Z.
 - △ FOR MULTIPLE MOD. CODES USE SEQUENCE SHOWN.
 - △ FOR MODIFICATION C AND ENTRY 24, ADD .188" TO LENGTH SHOWN.
 - △ ACCOMODATES ALL CONN. THD. SIZES.
 - △ PROVIDED ON CONNECTOR CODES 18 AND 21 ONLY.
 - △ A = AMPHENOL - CLASS A
B = BENDIX - CLASS A, E, & R
C = CANNON - CLASS A, E, & R
D = MFR. UNKNOWN - CLASS A, E, & R
R = AMPHENOL - CLASS R
- = MFR. CODE NOT REQUIRED
 - △ NOT PROVIDED ON CONNECTOR CODES 36, 38, 54, & 55.
 - △ FOR SHROUD INSTEAD OF O-RING USE CONNECTOR CODE 36.
 - △ FOR SHROUD INSTEAD OF O-RING USE CONNECTOR CODE 38.
 - △ FOR THRU TEETH AND SHROUD USE CONNECTOR CODE 55.
 - △ FOR CODES 36 AND 38 SELF-LOCKING HEX COUPLING IS STANDARD. "H" MOD. IS SELF-LOCKING SQUARE COUPLING.

* THIS DOCUMENT INCOMPLETE WITHOUT "ENTRY SPECIFICATION SHEET".



**TABLE II — CONNECTOR CODE 21
 MIL-C-26482, SERIES 1**

ORDER NO.	SHELL SIZE	A UNIFIED THD. CLASS 2B	C MAX. DIA.	D MAX.	E MAX. ④	F MAX.	G MAX. ④⑥	H MAX. DIA.	BAND MAX. 1 PIECE ENTRY	MOD. C MAX. 1 PIECE ENTRY
0 8	8	.438-28	.703	.62	1.16	1.00	1.28	.813	0 5	0 7
1 0	10	.562-24	.827	.63	1.17	1.06	1.34	.938	0 6	0 8
1 2	12	.688-24	.953	.66	1.20	1.19	1.41	1.125	0 8	1 0
1 4	14	.812-20	1.077	.69	1.23	1.31	1.47	1.250	1 0	1 2
1 6	16	.938-20	1.203	.71	1.25	1.44	1.53	1.375	1 2	1 6
1 8	18	1.062-18	1.327	.74	1.28	1.56	1.59	1.500	1 4	1 8
2 0	20	1.188-18	1.453	.76	1.30	1.69	1.66	1.625	1 6	2 0
2 2	22	1.312-18	1.577	.79	1.33	1.81	1.72	1.750	1 8	2 0
2 4	24	1.438-18	1.703	.82	1.36	1.94	1.78	1.875	2 0	2 4

NOTES:

1. ASSEMBLY IDENT. PER MIL-STD-130.
2. MATERIAL: COMPONENTS — ALUM. ALLOY
O’RING — SILICONE
- ③ "2 PIECE" CONFIG. SUPPLIED WHEN CABLE ENTRY DIA. EXCEEDS CONN. INSERT DIA..
- ④ DIMENSIONS INDICATED WILL BE .20" LESS WHEN ORDERED WITH MOD. CODE Z.
- ⑤ FOR MULTIPLE MOD. CODES USE SEQUENCE SHOWN.
- ⑥ FOR MODIFICATION C AND ENTRY 24, ADD .188" TO LENGTH SHOWN.
- ⑪ PROVIDED ON CONNECTOR CODES 18, 21, 22 AND 51.
- ⑬ NOT PROVIDED ON CONNECTOR CODES 36, 38, 54, & 55.
- ⑭ FOR SHROUD INSTEAD OF O-RING USE CONNECTOR CODE 36.
- ⑮ FOR SHROUD INSTEAD OF O-RING USE CONNECTOR CODE 38.
- ⑯ FOR THRU TEETH AND SHROUD USE CONNECTOR CODE 55.
- ⑰ FOR CODES 36 AND 38 SELF-LOCKING HEX COUPLING IS STANDARD. "H" MOD. IS SELF-LOCKING SQUARE COUPLING.

* THIS DOCUMENT INCOMPLETE WITHOUT "ENTRY SPECIFICATION SHEET".



**TABLE II — CONNECTOR CODE 40
 MIL-C-38999, SERIES III & IV**

ORDER NO.	SHELL SIZE		A METRIC THD. CLASS 6H	ØC MAX.	D MAX.	E MAX. △4	F MAX.	G MAX. △4	ØH ±.031	BAND MAX. 1 PIECE ENTRY	MOD. C MAX. 1 PIECE ENTRY
	COM'L.	MIL.									
0 8	9	A	M12 x 1.0	.703	.52	1.15	.84	1.28	.625	0 4	0 5
1 0	11	B	M15 x 1.0	.827	.54	1.17	.97	1.34	.750	0 6	0 8
1 2	13	C	M18 x 1.0	.953	.57	1.20	1.09	1.41	.875	0 8	1 0
1 4	15	D	M22 x 1.0	1.077	.59	1.23	1.22	1.47	1.000	1 0	1 2
1 6	17	E	M25 x 1.0	1.203	.62	1.25	1.34	1.53	1.125	1 2	1 6
1 8	19	F	M28 x 1.0	1.327	.63	1.26	1.41	1.59	1.250	1 3	1 6
2 0	21	G	M31 x 1.0	1.453	.66	1.29	1.53	1.66	1.375	1 5	1 8
2 2	23	H	M34 x 1.0	1.577	.68	1.32	1.66	1.72	1.500	1 7	2 0
2 4	25	J	M37 x 1.0	1.703	.71	1.34	1.78	1.78	1.625	1 9	2 0

NOTES:

1. ASSEMBLY IDENT. PER MIL-STD-130.
2. MATERIAL: COMPONENTS — ALUM. ALLOY
O-RING — SILICONE
- △3 "2 PIECE" CONFIG. SUPPLIED WHEN CABLE ENTRY DIA. EXCEEDS CONN. INSERT DIA..
- △4 DIMENSIONS INDICATED WILL BE .20" LESS WHEN ORDERED WITH MOD. CODE Z.
- △5 FOR MULTIPLE MOD. CODES USE SEQUENCE SHOWN.
- △11 PROVIDED ON CONNECTOR CODES 18 AND 21 ONLY.
- △13 NOT PROVIDED ON CONNECTOR CODES 36, 38, 54, & 55.
- △14 FOR SHROUD INSTEAD OF O-RING USE CONNECTOR CODE 36.
- △15 FOR SHROUD INSTEAD OF O-RING USE CONNECTOR CODE 38.
- △16 FOR THRU TEETH AND SHROUD USE CONNECTOR CODE 55.

* THIS DOCUMENT INCOMPLETE WITHOUT "ENTRY SPECIFICATION SHEET".

UNLESS OTHERWISE SPECIFIED DIMENSIONS ARE IN INCHES	MATERIAL AND FINISH PER NOTES DO NOT SCALE DRAWING	TOLERANCES: .XX = ± .06 .XXX = ± .03 ANGLES = ± 2'	CAGE CODE 31461	0\CAT\4\ 217-40	DR RGW 11-15-89	CHK GF 11-20-89	APP GF 11-20-89	REV. F
--	---	---	--------------------	--------------------	--------------------	--------------------	--------------------	-----------



**TABLE II — CONNECTOR CODE 41
 MIL-C-38999, SERIES I & II**

ORDER NO.	SHELL SIZE		A UNIFIED THD. CLASS 2B	C MAX. DIA.	D MAX.	E MAX. △	F MAX.	G MAX. △	H MAX. DIA.	BAND MAX. 1 PIECE ENTRY	MOD. C MAX. 1 PIECE ENTRY
	SER. II	SER. I									
0 8	8	9	.438-28	.703	.52	1.15	.84	1.28	.813	0 4	0 5
1 0	10	11	.562-24	.827	.54	1.17	.97	1.34	.938	0 6	0 8
1 2	12	13	.688-24	.953	.57	1.20	1.09	1.41	1.125	0 8	1 0
1 4	14	15	.812-20	1.077	.59	1.23	1.22	1.47	1.250	1 0	1 2
1 6	16	17	.938-20	1.203	.62	1.25	1.34	1.53	1.375	1 2	1 6
1 8	18	19	1.062-18	1.327	.63	1.26	1.41	1.59	1.500	1 3	1 6
2 0	20	21	1.188-18	1.453	.66	1.29	1.53	1.66	1.625	1 5	1 8
2 2	22	23	1.312-18	1.577	.68	1.32	1.66	1.72	1.750	1 7	2 0
2 4	24	25	1.438-18	1.703	.71	1.34	1.78	1.78	1.875	1 9	2 0

NOTES:

1. ASSEMBLY IDENT. PER MIL-STD-130.
2. MATERIAL: COMPONENTS — ALUM. ALLOY
O-RING — SILICONE
- △3 "2 PIECE" CONFIG. SUPPLIED WHEN CABLE ENTRY DIA. EXCEEDS CONN. INSERT DIA..
- △4 DIMENSIONS INDICATED WILL BE .20" LESS WHEN ORDERED WITH MOD. CODE Z.
- △5 FOR MULTIPLE MOD. CODES USE SEQUENCE SHOWN.
- △11 PROVIDED ON CONNECTOR CODES 18 AND 21 ONLY.
- △13 NOT PROVIDED ON CONNECTOR CODES 36, 38, 54, & 55.
- △14 FOR SHROUD INSTEAD OF O-RING USE CONNECTOR CODE 36.
- △15 FOR SHROUD INSTEAD OF O-RING USE CONNECTOR CODE 38.
- △16 FOR THRU TEETH AND SHROUD USE CONNECTOR CODE 55.
- △17 FOR CODES 36 AND 38 SELF-LOCKING HEX COUPLING IS STANDARD. "H" MOD. IS SELF-LOCKING SQUARE COUPLING.

* THIS DOCUMENT INCOMPLETE WITHOUT "ENTRY SPECIFICATION SHEET".

UNLESS OTHERWISE SPECIFIED DIMENSIONS ARE IN INCHES	MATERIAL AND FINISH PER NOTES DO NOT SCALE DRAWING	TOLERANCES:	.XX = ± .06	CAGE CODE 31461	O\CAT\4\ 217-41	DR RGW 11-15-91	CHK GF 11-20-91	APP	REV. F
			.XXX = ± .03						



TABLE II - CONNECTOR CODE 54

MIL-C-26482, SERIES 2
MIL-C-5015G, 3400 SERIES
MIL-C-81703, SERIES 3
MIL-C-83723, SERIES I & III
NAS1599

ORDER NO.	SHELL SIZE		A UNIFIED THD. CLASS 2B	C MAX. DIA.	D MAX.	E MAX. 4/6	F MAX.	G MAX. 4/6	H MAX. DIA.	BAND MAX. 1 PIECE ENTRY	MOD. C MAX. 1 PIECE ENTRY
	8	7									
0 3	3	-	.562-24	.669	.55	1.15	.84	1.28	.880	0 4	0 5
0 8	-	8,8S	.500-20	.617	.55	1.15	.84	1.28	.880	0 4	0 5
1 0	-	10,10S,10SL	.625-24	.734	.57	1.17	.97	1.31	.942	0 6	0 7
1 2	7	12,12S	.750-20	.858	.60	1.20	1.09	1.38	1.068	0 8	1 0
1 4	12	14,14S	.875-20	.984	.61	1.21	1.16	1.44	1.192	0 8	1 0
1 6	19	16,16S	1.000-20	1.112	.64	1.24	1.28	1.50	1.318	1 0	1 2
1 8	27	18	1.062-18	1.218	.65	1.25	1.34	1.53	1.380	1 2	1 6
2 0	37	20	1.188-18	1.345	.68	1.28	1.47	1.59	1.505	1 4	1 8
2 2	-	22	1.312-18	1.468	.70	1.30	1.59	1.66	1.630	1 6	2 0
2 4	-	24	1.438-18	1.593	.73	1.33	1.72	1.72	1.755	1 8	2 0
2 8	-	28	1.750-18	1.969	.78	1.38	1.97	1.88	2.068	2 0	2 4
3 2	-	32	2.000-18	2.219	.83	1.43	2.22	2.00	2.318	2 4	2 4
3 6	-	36	2.250-16	2.469	.86	1.46	2.34	2.13	2.568	2 4	2 4
4 0	-	40	2.500-16	2.719	.91	1.51	2.59	2.25	2.818	2 4	2 4
4 4	-	44	2.750-16	2.969	.96	1.56	2.84	2.38	3.068	2 4	2 4
4 8	-	48	3.000-16	3.219	1.01	1.61	3.09	2.50	3.318	2 4	2 4
6 1	61	-	1.500-18	1.653	.74	1.34	1.78	1.75	1.818	1 8	2 0

NOTES:

- 1. ASSEMBLY IDENT. PER MIL-STD-130.
- 2. MATERIAL: COMPONENTS - ALUM. ALLOY
O-RING - SILICONE

- 3 "2 PIECE" CONFIG. SUPPLIED WHEN CABLE ENTRY DIA. EXCEEDS CONN. INSERT DIA..
- 4 DIMENSIONS INDICATED WILL BE .20" LESS WHEN ORDERED WITH MOD. CODE Z.
- 5 FOR MULTIPLE MOD. CODES USE SEQUENCE SHOWN.
- 6 FOR MODIFICATION C AND ENTRY 24, ADD .188" TO LENGTH SHOWN.
- 7 SIZES PER MIL-C-5015 (3400 SERIES), MIL-C-26482 (SERIES 2), MIL-C-83723 (SERIES I & III), & NAS1599.

- 8 SIZES PER MIL-C-81703, SERIES 3.
- 11 PROVIDED ON CONNECTOR CODES 18 AND 21 ONLY.
- 13 NOT PROVIDED ON CONNECTOR CODES 36, 38, 54, & 55.
- 14 FOR SHROUD INSTEAD OF O-RING USE CONNECTOR CODE 36.
- 15 FOR SHROUD INSTEAD OF O-RING USE CONNECTOR CODE 38.
- 16 FOR THRU TEETH AND SHROUD USE CONNECTOR CODE 55.
- 17 FOR CODES 36 AND 38 SELF-LOCKING HEX COUPLING IS STANDARD. "H" MOD. IS SELF-LOCKING SQUARE COUPLING.

*THIS DOCUMENT INCOMPLETE WITHOUT "ENTRY SPECIFICATION SHEET".

UNLESS OTHERWISE SPECIFIED DIMENSIONS ARE IN INCHES	MATERIAL AND FINISH PER NOTES DO NOT SCALE DRAWING	TOLERANCES: .XX = ± .06 .XXX = ± .03 ANGLES = ± 2°	CAGE CODE 31461	O\CAT\4\ 217-54	DR TW 12-05-89	CHK GF 12-07-89	APP	REV. F
--	---	--	--------------------	--------------------	-------------------	--------------------	-----	-----------



TABLE II — CONNECTOR CODE 76
 PATT 105, 603 & 608

ORDER NO.	SHELL SIZE	<i>A</i> UNIFIED THD. CLASS 2B	<i>C</i> MAX. DIA.	<i>D</i> MAX.	<i>E</i> MAX. △ ₄	<i>F</i> MAX.	<i>G</i> MAX. △ ₄ △ ₆	BAND MAX. 1 PIECE ENTRY	MOD. C MAX. 1 PIECE ENTRY
0 8	8	.438-28	.703	.62	1.16	1.00	1.28	0 4	0 5
1 0	10	.562-24	.827	.63	1.17	1.06	1.34	0 7	1 0
1 2	12	.688-24	.953	.66	1.20	1.19	1.41	0 8	0 9
1 4	14	.812-20	1.077	.69	1.23	1.31	1.47	1 0	1 0
1 6	16	.938-20	1.203	.71	1.25	1.44	1.53	1 2	1 2
1 8	18	1.062-18	1.327	.74	1.28	1.56	1.59	1 4	1 6
2 0	20	1.188-18	1.453	.76	1.30	1.69	1.66	1 6	1 8
2 2	22	1.312-18	1.577	.79	1.33	1.81	1.72	1 8	2 0
2 4	24	1.438-18	1.703	.82	1.36	1.94	1.78	2 0	2 0

NOTES:

1. ASSEMBLY IDENT. PER MIL-STD-1285.
2. MATERIAL: COMPONENTS — ALUM. ALLOY
O'RING — SILICONE

△₃ "2 PIECE" CONFIG. SUPPLIED WHEN CABLE ENTRY DIA. EXCEEDS CONN. INSERT DIA..

△₄ DIMENSIONS INDICATED WILL BE .20" LESS WHEN ORDERED WITH MOD. CODE Z.

△₅ FOR MULTIPLE MOD. CODES USE SEQUENCE SHOWN.

△₆ FOR MODIFICATION C AND ENTRY 24, ADD .188" TO LENGTH SHOWN.