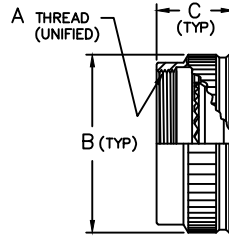
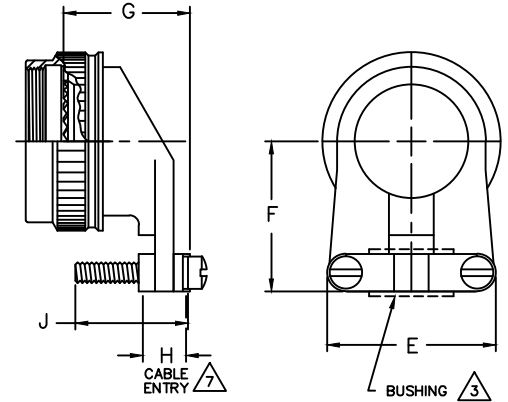


CONNECTOR/ADAPTER  
 INTERFACE PER  
 AS85049 FIGURE 3 (TYP)

STYLE F



STYLE E



STYLE L

*Example Part Number*

1 1 1 4 0 E 1 6 - 5 6  $\triangle_3$   $\triangle_4$   $\triangle_5$   $\triangle_6$

<p><b>ADAPTER SERIES</b>          STRAIN-RELIEF, STRAIGHT, 90° &amp;          NON STRAIN-RELIEF NUT</p>	<p><b>ADAPTER STYLE</b>          STYLE E - NUT, NON STRAIN-RELIEF          STYLE F - STRAIGHT STRAIN-RELIEF          STYLE L - 90° STRAIN-RELIEF</p>	<p><b>PLATING/MATERIAL CODE NUMBER</b>          55 - ALUMINUM ALLOY MATERIAL - CADMIUM, OLIVE DRAB OVER          NICKEL, PER SAE AMS-QQ-P-416 &amp; AMS-C-26074.          51 - ALUMINUM ALLOY MATERIAL - ELECTROLESS NICKEL,          PER AMS-C-26074, CLASS 4, GRADE B.          10 - 300 SERIES SST MATERIAL - PASSIVATE          PER SAE AMS-QQ-P-35.          34 - ALUMINUM ALLOY; ANODIZE, AMS-A-8625, TYPE II, BLACK          FOR ADDITIONAL FINISH OPTIONS, SEE CATALOG TABLE 4.</p>
<p><b>CONNECTOR CODE NUMBER</b>          MIL-DTL-38999, SERIES III &amp; IV, CLASS C,F,K &amp; W          MS38999/20/24/26/40/44/ &amp; /47</p>		

ORDER NUMBER	SHELL SIZE		A METRIC THD CLASS 6H	ØB MAX	C MAX	D MAX	E MAX	F MAX	G MAX	H $\triangle_7$ CABLE ENTRY		J ±.032	SCREW SIZE	(L)	ØM ±.015 MAX	ØN MAX
	COM'L	MIL								MAX	MIN					
0 8	9	A	M12 X 1.0	.719	.660	.729	.770	1.000	1.010	.234	.098	.500	6-32	.125	.609	.858
1 0	11	B	M15 X 1.0	.844	.660	.729	.770	1.100	1.010	.234	.153	.500	6-32	.188	.733	.984
1 2	13	C	M18 X 1.0	.969	.660	.729	1.010	1.100	1.210	.328	.190	.625	6-32	.312	.855	1.157
1 4	15	D	M22 X 1.0	1.094	.660	.822	1.135	1.250	1.260	.457	.260	.750	6-32	.375	.983	1.279
1 6	17	E	M25 X 1.0	1.219	.660	.822	1.135	1.300	1.410	.614	.283	.750	6-32	.500	1.109	1.406
1 8	19	F	M28 X 1.0	1.344	.660	.822	1.385	1.350	1.510	.634	.325	.750	8-32	.625	1.233	1.516
2 0	21	G	M31 X 1.0	1.469	.660	1.010	1.385	1.600	1.660	.698	.343	.875	8-32	.625	1.359	1.642
2 2	23	H	M34 X 1.0	1.594	.660	1.010	1.635	1.750	1.760	.823	.381	1.000	8-32	.750	1.483	1.768
2 4	25	J	M37 X 1.0	1.719	.660	1.010	1.698	1.850	1.910	.853	.418	1.125	8-32	.800	1.604	1.889

NOTES: UNLESS OTHERWISE SPECIFIED.

- ASSEMBLY IDENTIFICATION PER MIL-STD-1285.
- MATERIAL: ADAPTER COMPONENTS - ALUMINUM ALLOY, OR 300 SERIES SST.  
 SCREW, WASHERS & RETAINING RING - 300 SERIES SST.  
 SEE PLATING/MATERIAL CODE IN PART NUMBER.
- $\triangle_3$  ADD 'B' TO P/N IF BUSHING IS REQ'D OF STLYL F & L ONLY.  
 NOT AVAILABLE ON STYLE 'E'.
- $\triangle_4$  ADD 'E' TO P/N IF LOW PROFILE COUPLING NUT REQ'D REF. 'ØM'.
- $\triangle_5$  ADD 'H' TO P/N FOR SELF-LOCKING COUPLING. REF. 'ØN'.  
 SCREW HEADS SHALL BE ON SAME SIDE OF CLAMP (STYLE 'F')
- $\triangle_6$  ADD 'W' TO END OF P/N FOR LOCKWIRE HOLES IN  
 COUPLING NUT AND SCREWS.
- $\triangle_7$  "WIRE BUNDLE ACCOMMODATION RANGE" DIMENSION IS DEFINED  
 AS THE ENVELOPE AREA OF THE WIRE BUNDLE. THIS DIMENSION  
 IS NOT MEANT TO DEFINE THE CLAMP HARDWARE LIMITS.  
 CABLE ENTRY MEETS AS85049/38 & /39.