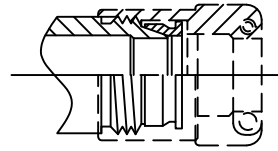
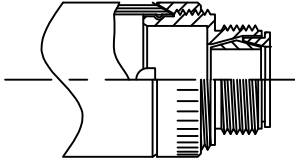


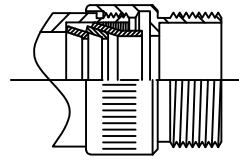
E**01, E**30
 DUAL RINGS
 SECTION I



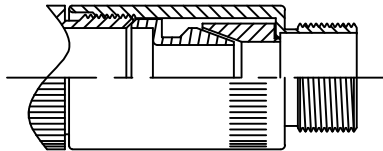
E**17, E**41
 SINGLE CONE RING
 SECTION I



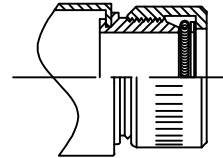
E**03 (SPLIT SHELL)
 DUAL BEVEL RINGS
 SECTION I



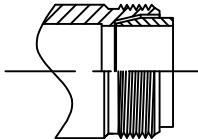
E**21, 173**
 DUAL/TRIPLE RING
 SECTION I



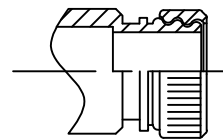
E**04
 ENCLOSED RINGS
 SECTION I



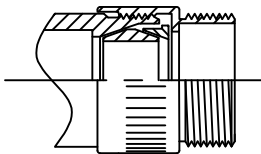
E**40
 SINGLE RING (RCG)
 SECTION I



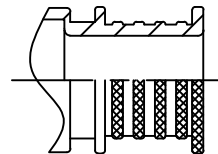
E**05
 SINGLE RING
 SECTION I



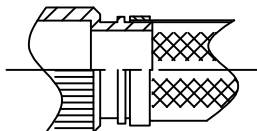
48** SERIES
 CANDELBRA (LAMP BASE THD)
 SECTION I



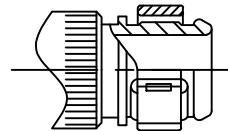
E**07, E**30
 DUAL BEVEL RINGS
 SECTION I



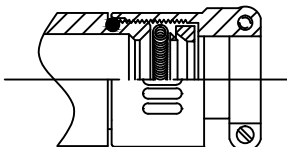
308 SERIES
 CONSTANT FORCE SPRING BAND
 SECTION 2



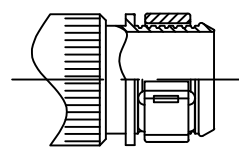
E**11, E**32, ...
 MAGNA FORMED SHIELD SOCK
 SECTION 2, SECTION 3



E**19 & 271 SERIES
 EMI/RFI BAND (KNURL)
 SECTION I



E**15, E**38
 RCG SPRING
 SECTION I



901-406, 901-813, ...
 EMI/RFI BAND (GROOVES)
 SECTION 3

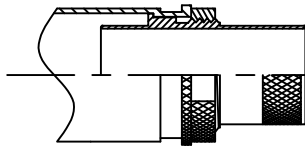


ELECTRO ADAPTER, INC.
CHATSWORTH, CALIFORNIA, USA 91311
PHONE: (818) 998-1198
FAX: (818) 709-5773
WEB SITE: www.electro-adapter.com

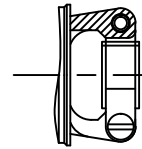
**SUPPORT DATA
ENTRY STYLE REFERENCE
CHART**

EAIESRC

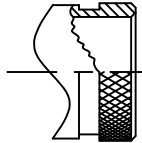
SHEET 2 OF 2



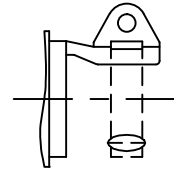
265 SERIES
IBISS, DUAL BAND
SECTION 2



III** SERIES
OPEN FRAME - SADDLE BAR
SECTION 4



31** SERIES
SHRINK BOOT
SECTION 5



105** SERIES
WIRE BUNDLE / TIE WRAP
SECTION 4

NOTES: UNLESS OTHERWISE SPECIFIED

1. ENTRY'S ARE EITHER SHOWN AS NON-ENVIRONMENTAL OR ALL ENVIRONMENTAL COMPONENTS HAVE BEEN REMOVED FOR CLARIFICATION OF TERMINATION STYLE
2. CONSULT FACTORY FOR OTHER ENTRY STYLES NOT SHOWN