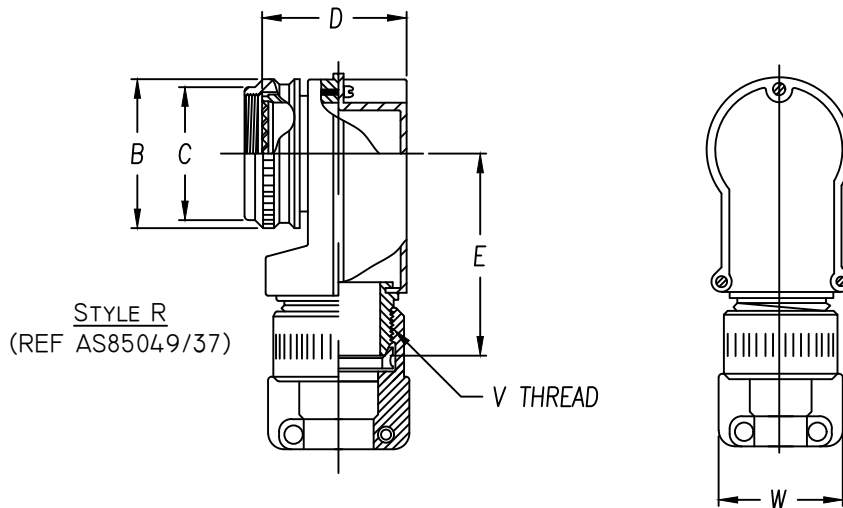




**Table 2 - Cable Entry Data**

ENTRY ORDER NUMBER	CABLE RANGE		<b>V</b>	<b>W</b>
	MAX	MIN	UNIFIED THD CLASS 2A	REF
<b>04</b>	.250	.125	.625 - 24	.844
<b>06</b>	.375	.219	.750 - 20	1.000
<b>08</b>	.500	.344	.875 - 20	1.125
<b>10</b>	.625	.469	1.000 - 20	1.250
<b>12</b>	.750	.594	1.125 - 18	1.375
<b>14</b>	.875	.719	1.250 - 18	1.500

AVAILABLE FOR CONNECTOR CODES 40, 41 & 54. CONSULT FACTORY FOR TABLE 1 DIMENSIONS ON OTHER CODES.

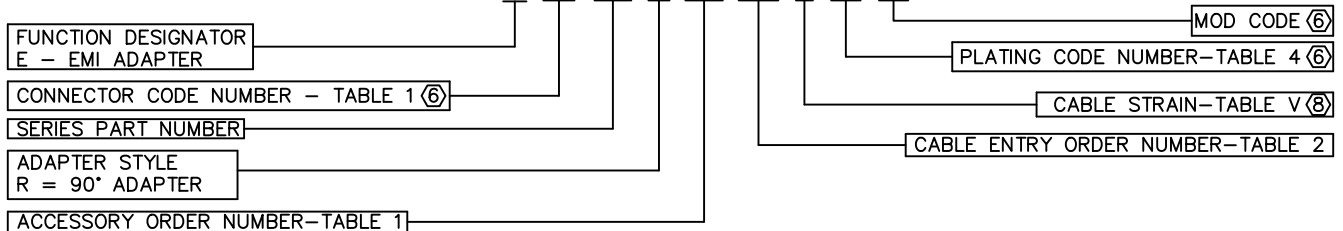


**OTHER CONNECTOR CODES AVAILABLE  
 CONTACT ENGINEERING FOR DETAILS**

ASSEMBLY PART NUMBER

TO ESTABLISH YOU P/N, USE THE FOLLOWING EXAMPLE

**E 41 41 R 23 08 9 51**



# Table 1 - Order Number Data

Accessory Order Number By Connector Code & Shell Size

ORDER NUMBER					UNIFIED THREAD	MAX DIA.	MAX DIA.	REF DIM.	REF DIM.	ORDER NUMBER
	40	41	54							
01	③				.375-32	.750	.531			01
03					.438-27	.812	.594	.893		03
04		8, 9			.438-28	.812	.594		1.816	04
05			8 & 8S		.500-20	.875	.656			05
06					.500-28	.875	.656	1.462		06
07	9, A				M12 x 1.0	.719	.656	.893		07
08		10, 11		3	.562-24	.844	.719			08
10			10, 10S, 10SL		.625-24	1.000	.781	.893	1.816	10
11					.625-28	1.000	.781	1.462		11
12	11, B				M15 x 1.0	.844	.781	.893		12
13		12, 13			.688-24	1.062	.844	.893		13
15			12 & 12S	7	.750-20	1.125	.906	1.369	1.816	15
16	13, C				M18 x 1.0	.969	.906	.893		16
18		14, 15			.812-20	1.188	.969	.981		18
19			14 & 14S	12	.875-20	1.250	1.031		1.916	19
20					.875-28	1.250	1.031	1.577		20
21	15, D				M22 x 1.0	1.094	1.031	.981		21
23		16, 17			.938-20	1.312	1.094		2.016	23
24			16 & 16S	19	1.000-20	1.375	1.156			24
25					1.000-28	1.375	1.156	1.824		25
26	17, E				M25 x 1.0	1.219	1.156	1.230		26
28		18, 19	18	27	1.062-18	1.438	1.219			28
29					1.125-18	1.500	1.281	1.202		29
30					1.125-24	1.500	1.281		2.016	30
31					1.125-28	1.500	1.281	1.796		31
32	19, F				M28 x 1.0	1.344	1.281	1.202		32
34		20, 21	20	37	1.188-18	1.562	1.344		2.016	34
35					1.250-18	1.625	1.406			35
36					1.250-28	1.625	1.406	1.807		36
37	21, G				M31 x 1.0	1.469	1.406	1.223		37
39		22, 23	22		1.312-18	1.688	1.469	1.181		39
40					1.375-18	1.750	1.531		2.016	40
41					1.375-28	1.750	1.531	1.775		41
42	23, H				M34 x 1.0	1.594	1.531	1.181		42
44		24, 25	24		1.438-18	1.812	1.594	1.181		44
45				61	1.500-18	1.875	1.656		2.016	45
46					1.500-28	1.875	1.656	1.775		46
47	25, J				M37 x 1.0	1.719	1.656	1.181		47

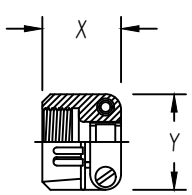
NOTES: UNLESS OTHERWISE SPECIFIED.

- 1 THREADS ARE RIGHT HAND IN ACCORDANCE WITH FED-STD-H28, CLASS 2B.
- ③ THREADS NOTED ARE ISO METRIC, CLASS 6H.
- 5 TABLE 1 LISTS THE MOST USED CONNECTOR CODES. SEE SECTION 11 FOR OTHER CODES AVAILABLE AND COMPLETE CONNECTOR PART NUMBER CROSS REFERENCE.
- ⑥ SEE SUPPORT DATA SECTION FOR PLATING AND MODIFICATION CODE OPTIONS.
- ⑧ SEE SUPPORT DATA SECTION FOR TABLE V & AVAILABLE STYLES

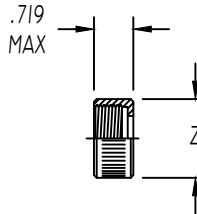


**Table 2 - Environmental / Non-Environmental Cable Entry Data**

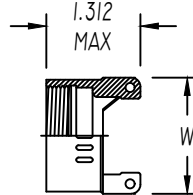
ENTRY ORDER NUMBER	ENVIRONMENTAL		NON ENVIRONMENTAL		V UNIFIED THREAD	R MAX DIM.	S MAX DIM.	T MAX DIM.	U MAX DIM.	W MAX DIM.	X MAX DIM.	Y MAX DIM.	Z MAX DIA.
	GLAND	RANGE	CABLE	RANGE									
	MAX	MIN	MAX	MIN									
△ 03	.250	.156	.250	.156	.500-28	N / A	.812	1.375	.812	N / A	.844	.781	.656
04	.312	.188	.312	.188	.625-24	1.031	.937	1.375	.937	.875	.844	.906	.781
06	.438	.281	.438	.281	.750-20	1.031	1.062	1.375	1.062	1.000	.906	1.094	.906
08	.562	.375	.562	.344	.875-20	1.031	1.188	1.375	1.188	1.125	.969	1.188	1.031
10	.625	.500	.625	.375	1.000-20	1.094	1.312	1.437	1.312	1.250	.969	1.281	1.156
12	.750	.500	.750	.438	1.188-18	1.219	1.562	1.437	1.562	1.375	.969	1.500	1.344
△ 14	.875	.750	.875	.719	1.250-18	N / A	N / A	N / A	N / A	1.500	N / A	N / A	N / A
16	1.000	.844	1.000	.781	1.438-18	1.219	1.750	1.562	1.750	1.625	1.062	1.719	1.594
20	1.250	.938	1.250	.750	1.750-18	1.344	2.250	1.812	2.250	1.750	1.125	2.062	1.906
24	1.375	1.000	1.375	.781	2.000-18	N / A	2.375	2.062	2.375	N / A	1.188	2.312	2.156
28	1.625	1.250	1.625	.969	2.250-16	N / A	2.625	2.062	2.625	N / A	1.719	2.719	2.406
32	1.875	1.500	1.875	1.125	2.500-16	N / A	2.812	2.188	2.812	N / A	1.781	2.969	2.656



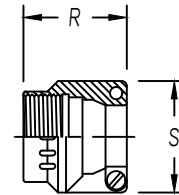
**STYLE 1** △  
 AS85049/41A CLAMP  
 (MS 3057\*\*A)



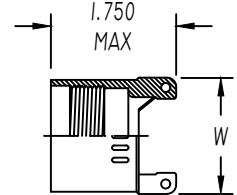
**STYLE 2** △  
 NUT



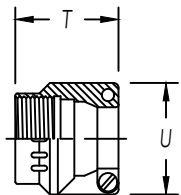
**STYLE 3** △  
 NON-ENVIRONMENTAL



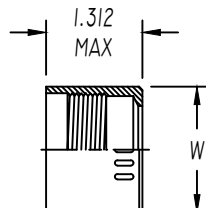
**STYLE 3** △  
 NUT ENVIRONMENTAL  
 (AS85049/1)  
 (MS 3057-\*\*B)



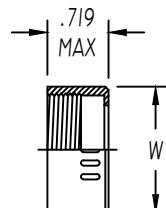
**STYLE 3** △  
 ENVIRONMENTAL



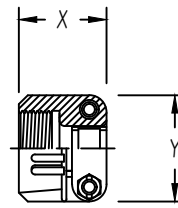
**STYLE 4** △  
 STRAIN RELIEF ENVIRONMENTAL  
 (AS85049/2)  
 (MS 3057-\*\*C)



**STYLE 4** △  
 ENVIRONMENTAL



**STYLE 4** △  
 NON-ENVIRONMENTAL



**STYLE 9** △  
 STRAIN-RELIEF CLAMP WITH TELESCOPING SCREWS

NOTES: UNLESS OTHERWISE SPECIFIED

△ AVAILABLE ONLY ON: A\*\*01, A\*\*30, E\*\*01, E\*\*03, E\*\*04, E\*\*05, E\*\*07, E\*\*21, E\*\*30, & E\*\*33

△ AVAILABLE ONLY ON: E\*\*15, E\*\*17, E\*\*38, E\*\*40, & E\*\*41

3. CONSULT FACTORY FOR SIZES AND INFORMATION NOT LISTED