



Table 2 - Cable Entry Data

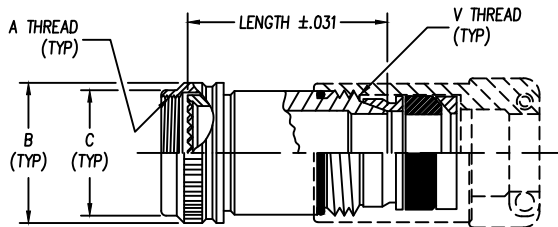
ENTRY ORDER NUMBER	ENVIRONMENTAL GLAND RANGE		NON ENVIRONMENTAL CABLE RANGE		V UNIFIED THREAD
	MAX	MIN	MAX	MIN	
	03	.250	.156	.250	
04	.312	.188	.312	.188	.625-24
06	.438	.281	.438	.281	.750-20
08	.562	.375	.562	.344	.875-20
10	.625	.500	.625	.375	1.000-20
12	.750	.500	.750	.438	1.188-18
14	.875	.719	.875	.688	1.250-18
16	1.000	.844	1.000	.781	1.438-18
18	1.125	.969	1.125	.906	1.438-18
20	1.250	.938	1.250	.750	1.750-18

WHEN MAXIMUM CABLE ENTRY EXCEEDS THE CONNECTOR INTERFACE DIAMETER, A 2 PIECE ADAPTER WILL BE SUPPLIED.

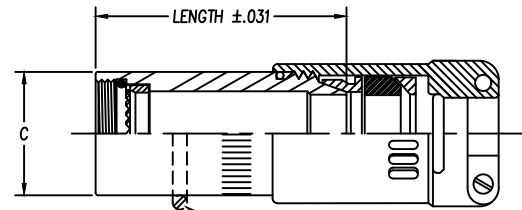
Table 3 - Length Code Data

CONN CODE NUMBER	MIN ORDER LENGTH	MIN LENGTH CODE
40	1.250	05
41	1.250	05
54	1.250	05

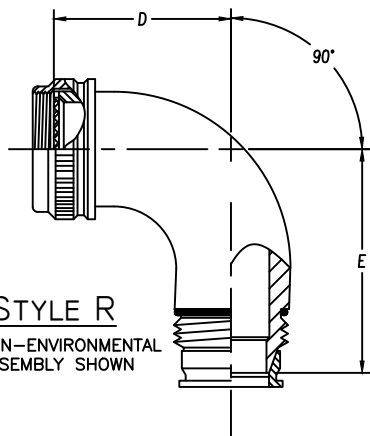
**OTHER CONNECTOR CODES AVAILABLE
 CONTACT ENGINEERING FOR DETAILS**



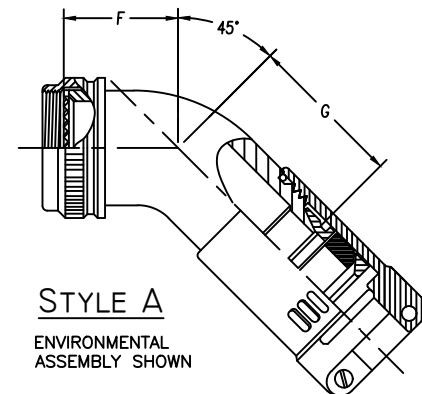
STYLE S
 (REF AS85049/18 & /19)



STYLE B
 (REF AS85049/17 & /36) SEE MOD SECTION



STYLE R
 NON-ENVIRONMENTAL ASSEMBLY SHOWN



STYLE A
 ENVIRONMENTAL ASSEMBLY SHOWN

ASSEMBLY PART NUMBER
 TO ESTABLISH YOU P/N, USE THE FOLLOWING EXAMPLE

E 41 17 S 23 08 9 B 06 51

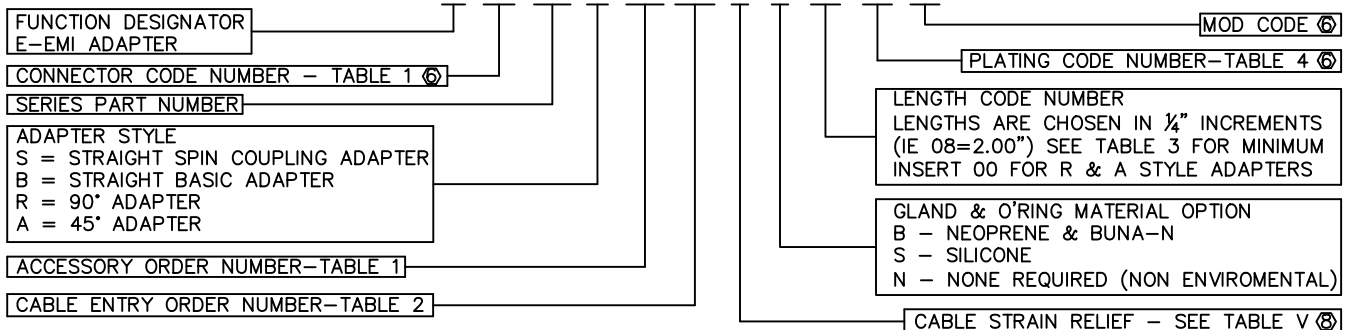


Table 1 - Order Number Data

E * * 17
SHEET 2 OF 2

Accessory Order Number By Connector Code & Shell Size

ORDER NUMBER	MIL-DTL-38999 SERIES III & IV		MIL-DTL-38999 SERIES I & II		MIL-DTL-5015 CRIMP MIL-DTL-26482 SER 2 MIL-DTL-83723 SER III		MIL-C-81703 NAS 1589		A UNIFIED THREAD	B MAX DIA.	C MAX DIA.	D ±.125 DIM.	E MAX DIM.	F ±.125 DIM.	G MAX DIM.	ORDER NUMBER	
	40 ③	41	54														
01									.375-32	.750	.531						01
03									.438-27	.812	.594						03
04		8, 9							.438-28	.812	.594						04
05			8 & 8S						.500-20	.875	.656	1.125	1.438	.812	1.125		05
06									.500-28	.875	.656						06
07	9, A								M12 x 1.0	.719	.656						07
08		10, 11			3				.562-24	.844	.719						08
10			10,10S,10SL						.625-24	1.000	.781	1.250	1.562	.875	1.188		10
11									.625-28	1.000	.781						11
12	11, B								M15 x 1.0	.844	.781						12
13		12, 13							.688-24	1.062	.844						13
15			12 & 12S	7					.750-20	1.125	.906	1.375	1.688	.938	1.250		15
16	13, C								M18 x 1.0	.969	.906						16
18		14, 15							.812-20	1.188	.969						18
19			14 & 14S	12					.875-20	1.250	1.031	1.500	1.812	1.000	1.312		19
20									.875-28	1.250	1.031						20
21	15, D								M22 x 1.0	1.094	1.031						21
23		16, 17							.938-20	1.312	1.094						23
24			16 & 16S	19					1.000-20	1.375	1.156	1.625	1.938	1.062	1.375		24
25									1.000-28	1.375	1.156						25
26	17, E								M25 x 1.0	1.219	1.156						26
28		18, 19	18	27					1.062-18	1.438	1.219						28
29									1.125-18	1.500	1.281						29
30									1.125-24	1.500	1.281	1.750	2.062	1.094	1.438		30
31									1.125-28	1.500	1.281						31
32	19, F								M28 x 1.0	1.344	1.281						32
34		20, 21	20	37					1.188-18	1.562	1.344						34
35									1.250-18	1.625	1.406	1.875	2.188	1.156	1.469		35
36									1.250-28	1.625	1.406						36
37	21, G								M31 x 1.0	1.469	1.406						37
39		22, 23	22						1.312-18	1.688	1.469						39
40									1.375-18	1.750	1.531	2.000	2.312	1.188	1.500		40
41									1.375-28	1.750	1.531						41
42	23, H								M34 x 1.0	1.594	1.531						42
44		24, 25	24						1.438-18	1.812	1.594						44
45					61				1.500-18	1.875	1.656						45
46									1.500-28	1.875	1.656	2.125	2.438	1.250	1.562		46
47	25, J								M37 x 1.0	1.719	1.656						47
48									1.562-18	1.938	1.719						48
49									1.625-18	2.000	1.781	2.375	2.688	1.344	1.688		49
51			28						1.750-18	2.125	1.906						51
52									1.875-16	2.250	2.031						52
53									1.906-18	2.281	2.062	2.625	2.938	1.438	1.750		53
54			32						2.000-18	2.375	2.156						54
55									2.062-16	2.469	2.219						55
56									2.062-24	2.469	2.219						56
57									2.125-16	2.500	2.281	2.875	3.188	1.562	1.875		57
58									2.125-18	2.500	2.281						58
59			36						2.250-16	2.625	2.406						59
60									2.312-16	2.719	2.469						60
61									2.375-16	2.750	2.531	3.125	3.438	1.688	2.000		61
62			40						2.500-16	2.875	2.656						62

NOTES: UNLESS OTHERWISE SPECIFIED.

1 THREADS ARE RIGHT HAND IN ACCORDANCE WITH FED-STD-H28, CLASS 2B.

③ THREADS NOTED ARE ISO METRIC, CLASS 6H.

5 TABLE 1 LISTS THE MOST USED CONNECTOR CODES. SEE SECTION 11 FOR OTHER CODES AVAILABLE AND COMPLETE CONNECTOR PART NUMBER CROSS REFERENCE.

⑥ SEE SUPPORT DATA SECTION FOR PLATING AND MODIFICATION CODE OPTIONS.

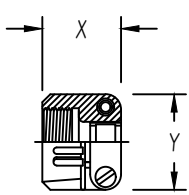
⑧ SEE SUPPORT DATA SECTION FOR TABLE V & AVAILABLE STYLES

REV | C

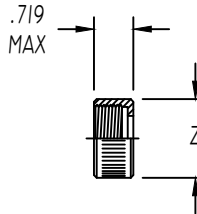


Table 2 - Environmental / Non-Environmental Cable Entry Data

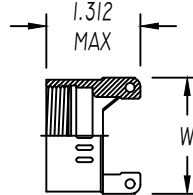
ENTRY ORDER NUMBER	ENVIRONMENTAL		NON ENVIRONMENTAL		V UNIFIED THREAD	R MAX DIM.	S MAX DIM.	T MAX DIM.	U MAX DIM.	W MAX DIM.	X MAX DIM.	Y MAX DIM.	Z MAX DIA.
	GLAND RANGE		CABLE RANGE										
	MAX	MIN	MAX	MIN									
△ 03	.250	.156	.250	.156	.500-28	N / A	.812	1.375	.812	N / A	.844	.781	.656
04	.312	.188	.312	.188	.625-24	1.031	.937	1.375	.937	.875	.844	.906	.781
06	.438	.281	.438	.281	.750-20	1.031	1.062	1.375	1.062	1.000	.906	1.094	.906
08	.562	.375	.562	.344	.875-20	1.031	1.188	1.375	1.188	1.125	.969	1.188	1.031
10	.625	.500	.625	.375	1.000-20	1.094	1.312	1.437	1.312	1.250	.969	1.281	1.156
12	.750	.500	.750	.438	1.188-18	1.219	1.562	1.437	1.562	1.375	.969	1.500	1.344
△ 14	.875	.750	.875	.719	1.250-18	N / A	N / A	N / A	N / A	1.500	N / A	N / A	N / A
16	1.000	.844	1.000	.781	1.438-18	1.219	1.750	1.562	1.750	1.625	1.062	1.719	1.594
20	1.250	.938	1.250	.750	1.750-18	1.344	2.250	1.812	2.250	1.750	1.125	2.062	1.906
24	1.375	1.000	1.375	.781	2.000-18	N / A	2.375	2.062	2.375	N / A	1.188	2.312	2.156
28	1.625	1.250	1.625	.969	2.250-16	N / A	2.625	2.062	2.625	N / A	1.719	2.719	2.406
32	1.875	1.500	1.875	1.125	2.500-16	N / A	2.812	2.188	2.812	N / A	1.781	2.969	2.656



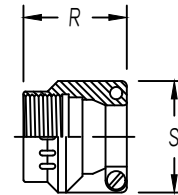
STYLE 1 △
 AS85049/41A CLAMP
 (MS 3057**A)



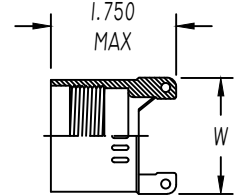
STYLE 2 △
 NUT



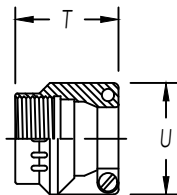
STYLE 3 △
 NON-ENVIRONMENTAL



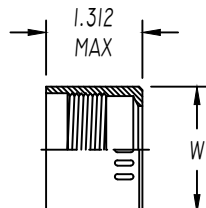
STYLE 3 △
 NUT
 ENVIRONMENTAL
 (AS85049/1)
 (MS 3057-**B)



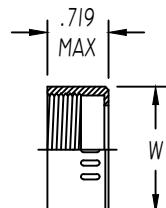
STYLE 3 △
 ENVIRONMENTAL



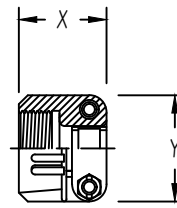
STYLE 4 △
 STRAIN RELIEF
 ENVIRONMENTAL
 (AS85049/2)
 (MS 3057-**C)



STYLE 4 △
 ENVIRONMENTAL



STYLE 4 △
 NON-ENVIRONMENTAL



STYLE 9 △
 STRAIN-RELIEF CLAMP
 WITH TELESCOPING SCREWS

NOTES: UNLESS OTHERWISE SPECIFIED

△ AVAILABLE ONLY ON: A**01, A**30, E**01, E**03, E**04, E**05, E**07, E**21, E**30, & E**33

△ AVAILABLE ONLY ON: E**15, E**17, E**38, E**40, & E**41

3. CONSULT FACTORY FOR SIZES AND INFORMATION NOT LISTED