



ELECTRO ADAPTER INC.
 CHATSWORTH, CALIFORNIA, USA 91311
 PHONE : (818) 998-1198
 FAX : (818) 709-5773

**SECTION 1 - MECHANICAL
 STRAIN RELIEF, EMI / RFI,
 ENCLOSED RINGS, ENVIRONMENTAL
 SAE AS85049 CATEGORY 1**

E * * 04
 SHEET 1 OF 2

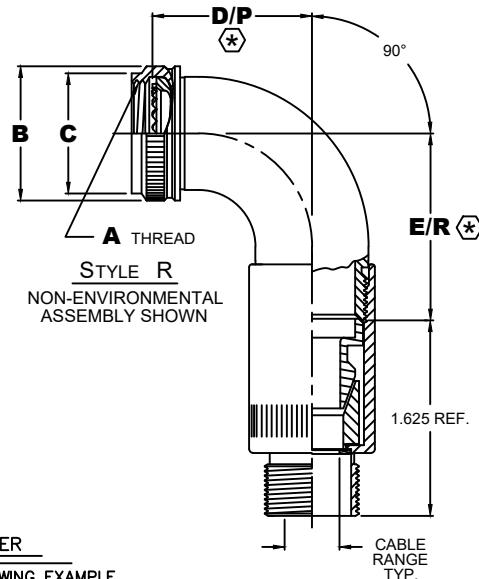
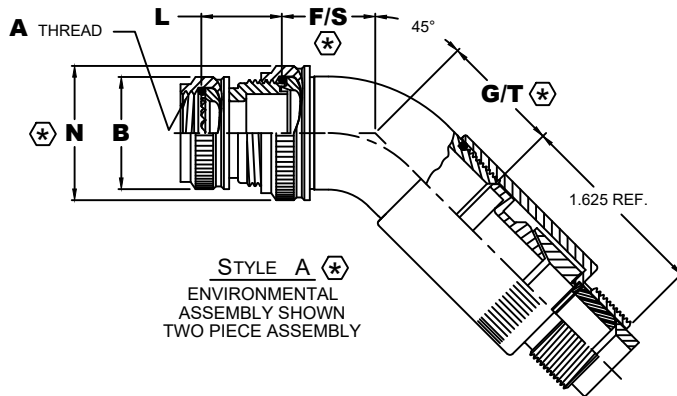
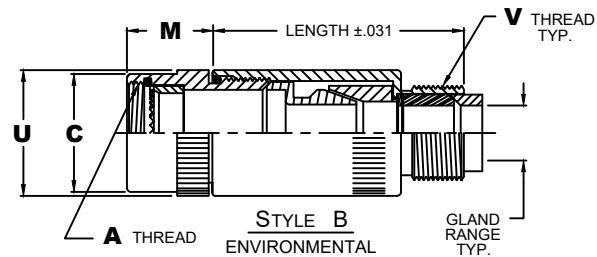
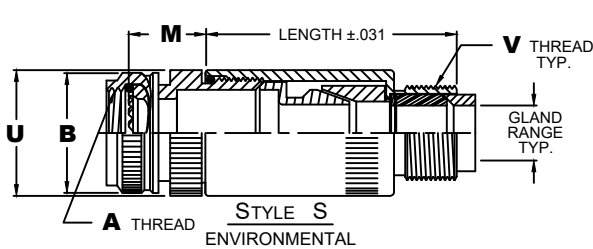
Table 2 - Environmental / Non-Environmental Cable Entry Data

ENTRY ORDER NUMBER	ENVIRONMENTAL GLAND RANGE		NON ENVIRONMENTAL CABLE RANGE		N MAX DIA.	P MAX DIM.	R MAX DIM.	S MAX DIM.	T MAX DIM.	U ±.031 DIA.	V UNIFIED THREAD
	MAX	MIN	MAX	MIN							
03	.250	.156	.250	.156	N/A	1.156	1.344	.875	.938	.750	.500-28
04	.312	.188	.312	.188	.734	1.219	1.406	.906	.969	.875	.625-24
06	.438	.281	.438	.281	.858	1.406	1.531	.969	1.031	1.000	.750-20
08	.562	.375	.562	.344	.984	1.531	1.656	1.031	1.094	1.125	.875-20
10	.625	.500	.625	.375	1.112	1.656	1.781	1.094	1.125	1.125	1.000-20
12	.750	.500	.750	.438	1.345	1.906	2.031	1.188	1.250	1.250	1.188-18
16	.938	.625	.938	.562	1.594	2.156	2.281	1.281	1.344	1.500	1.438-18
20	1.250	.938	1.250	.750	1.968	2.406	2.469	1.375	1.469	1.875	1.750-18
24	1.375	1.000	1.375	.781	2.219	2.656	2.719	1.500	1.594	2.125	2.000-18
28	1.625	1.250	1.625	.969	2.469	2.906	2.969	1.594	1.656	2.375	2.250-16
32	1.875	1.500	1.875	1.125	2.719	3.156	3.219	1.719	1.750	2.625	2.500-16

Table 3

CONN CODE NUMBER	L MAX DIM.	M MAX DIM.
18	.875	1.500
19	.875	1.500
21	.875	1.125
30	1.032	.750
32	1.094	1.500
40	.750	.750
41	.750	.750
47	.750	.750
51	.875	.750
54	.750	1.250
61	1.094	1.000
76	.750	1.125

(*) DIMENSIONS D, E, F & G APPLY FOR ONE PIECE ASSEMBLY AS SHOWN IN STYLE R. DIMENSIONS N, P, R, S & T APPLY FOR TWO PIECE ASSEMBLY AS SHOWN IN STYLE A, WHEN CABLE ENTRY EXCEEDS CONNECTOR I.D.



ASSEMBLY PART NUMBER
 TO ESTABLISH YOUR P/N, USE THE FOLLOWING EXAMPLE

E 41 04 S 23 08 9 B 08 51

FUNCTION DESIGNATOR E-EMI ADAPTER	MOD CODE (6)
CONNECTOR CODE NUMBER - TABLE 1 (6)	PLATING CODE NUMBER-TABLE 4 (6)
SERIES PART NUMBER	LENGTH CODE NUMBER LENGTHS ARE CHOSEN IN 1/4" INCREMENTS (IE 08=2.00") SEE TABLE 3 FOR MINIMUM INSERT 00 FOR R & A STYLE ADAPTERS
ADAPTER STYLE B = STRAIGHT ADAPTER R = 90° ADAPTER A = 45° ADAPTER	GLAND & O'RING MATERIAL OPTION B - NEOPRENE & BUNA-N S - SILICONE N - NONE REQUIRED (NON ENVIROMENTAL)
ACCESSORY ORDER NUMBER-TABLE 1	CABLE STRAIN RELIEF - SEE TABLE V (8)
CABLE ENTRY ORDER NUMBER-TABLE 2	

Table 1 - Order Number Data

E * * 04

SHEET 2 OF 2

Accessory Order Number By Connector Code & Shell Size

ORDER NUMBER	Accessories										A UNIFIED THREAD	B MAX DIA.	C MAX DIA.	D ±.125 DIM.	E MAX DIM.	F ±.125 DIM.	G MAX DIM.	ORDER NUMBER
	18 ④	21	32 ②	40 ③	41	54	64	61	76									
01	8S (B)									.375-32	.750	.531						01
03	8S (A)									.438-27	.812	.594						03
04	8S (C)	8			8, 9			8		.438-28	.812	.594	1.125	1.188	.812	.875		04
05								8 & 8S		.500-20	.875	.656						05
06	10S (-)							8, A		.500-28	.875	.656						06
07				9, A						M12 x 1.0	.719	.656						07
08	10SL (C)	10			10, 11			3		.562-24	.844	.719						08
10	10SL(A,B), 12, 12S(B,C)					10, 10S, 10SL		12		.625-24	1.000	.781	1.250	1.312	.875	.938		10
11				11, B				10, B		.625-28	1.000	.781						11
12										M15 x 1.0	.844	.781						12
13	12 & 12S (A)	12		12, 13					12	.688-24	1.062	.844	1.375	1.438	.938	1.000		13
15	14 & 14S (-)		12			12 & 12S	7	14		.750-20	1.125	.906						15
16				13, C						M18 x 1.0	.969	.906						16
18		14			14, 15				14	.812-20	1.188	.969						18
19	16 & 16S (-)		14			14 & 14S	12	16		.875-20	1.250	1.031	1.500	1.562	1.000	1.062		19
20								14, D		.875-28	1.250	1.031						20
21				15, D						M22 x 1.0	1.094	1.031						21
23		16			16, 17				16	.938-20	1.312	1.094						23
24	18 (-)		16			16 & 16S	19	18		1.000-20	1.375	1.156	1.625	1.688	1.062	1.125		24
25								16, E		1.000-28	1.375	1.156						25
26				17, E						M25 x 1.0	1.219	1.156						26
28		18			18, 19	18	27		18	1.062-18	1.438	1.219						28
29	20 (-)		18					20		1.125-18	1.500	1.281						29
30	20 (R)									1.125-24	1.500	1.281	1.750	1.812	1.094	1.156		30
31								18, F		1.125-28	1.500	1.281						31
32				19, F						M28 x 1.0	1.344	1.281						32
34		20			20, 21	20	37		20	1.188-18	1.562	1.344						34
35	22 (-)		20					22		1.250-18	1.625	1.406	1.875	1.938	1.156	1.219		35
36								20, G		1.250-28	1.625	1.406						36
37				21, G						M31 x 1.0	1.469	1.406						37
39		22			22, 23	22			22	1.312-18	1.688	1.469						39
40	24 (-)		22					24		1.375-18	1.750	1.531	2.000	2.062	1.188	1.250		40
41								22, H		1.375-28	1.750	1.531						41
42				23, H						M34 x 1.0	1.594	1.531						42
44		24			24, 25	24			24	1.438-18	1.812	1.594						44
45							61			1.500-18	1.875	1.656						45
46								24, J		1.500-28	1.875	1.656	2.125	2.188	1.250	1.312		46
47				25, J						M37 x 1.0	1.719	1.656						47
48										1.562-18	1.938	1.719						48
49	28 (-)		24					28		1.625-18	2.000	1.781	2.375	2.625	1.344	1.625		49
51						28				1.750-18	2.125	1.906						51
52	32 (B,C)		28					32		1.875-16	2.250	2.031						52
53	32 (A,R)									1.906-18	2.281	2.062	2.625	3.000	1.438	1.812		53
54						32				2.000-18	2.375	2.156						54
55	36 (B)		32					36		2.062-16	2.469	2.219						55
56	36 (R)									2.062-24	2.469	2.219						56
57	36 (C)									2.125-16	2.500	2.281	2.875	3.250	1.562	1.938		57
58	36 (A)									2.125-18	2.500	2.281						58
59						36				2.250-16	2.625	2.406						59
60	40 (B)							40		2.312-16	2.719	2.469						60
61	40 (A,C)		36							2.375-16	2.750	2.531	3.125	3.500	1.688	2.062		61
62						40				2.500-16	2.875	2.656						62

NOTES: UNLESS OTHERWISE SPECIFIED.

1 THREADS ARE RIGHT HAND IN ACCORDANCE WITH FED-STD-H28, CLASS 2B.

② THREADS NOTED ARE LEFT HAND, CLASS 2B.

③ THREADS NOTED ARE ISO METRIC, CLASS 6H.

④ CODE 18 SHELL SIZES ARE FOLLOWED IN PARENTHESIS BY CONNECTOR MFR CODE. SEE CONNECTOR CODE 18 CHART AT RIGHT & EXAMPLE PART NUMBER FOR DETAILS.

5 TABLE 1 LISTS THE MOST USED CONNECTOR CODES. SEE SECTION 11 FOR OTHER CODES AVAILABLE AND COMPLETE CONNECTOR PART NUMBER CROSS REFERENCE.

⑥ SEE SUPPORT DATA SECTION FOR PLATING AND MODIFICATION CODE OPTIONS.

⑦ ADD .25 TO "D" & "F" FOR CONNECTOR CODES 30, 32 & 61.

⑧ SEE SUPPORT DATA SECTION FOR TABLE V & AVAILABLE STYLES

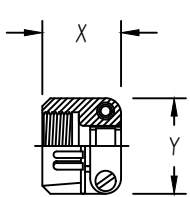
④ Connector Code 18 Chart

CONNECTOR CODE	CONNECTOR MANUFACTURER
	(MS3100, MS3101, MS3106 & MS3107)
A	AMPHENOL, CLASS A
B	BENDIX, CLASS A, E & R
C	CANNON, CLASS A, E & R
D	MFR. UNKNOWN, CLASS A, E & R
R	AMPHENOL, CLASS R
-	MFR. CODE NOT REQUIRED

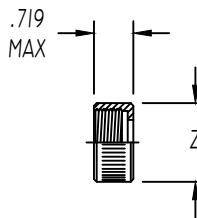


Table 2 - Environmental / Non-Environmental Cable Entry Data

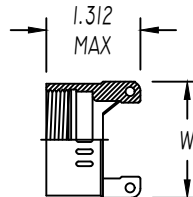
ENTRY ORDER NUMBER	ENVIRONMENTAL		NON ENVIRONMENTAL		V UNIFIED THREAD	R MAX DIM.	S MAX DIM.	T MAX DIM.	U MAX DIM.	W MAX DIM.	X MAX DIM.	Y MAX DIM.	Z MAX DIA.
	GLAND	RANGE	CABLE	RANGE									
	MAX	MIN	MAX	MIN									
△ 03	.250	.156	.250	.156	.500-28	N / A	.812	1.375	.812	N / A	.844	.781	.656
04	.312	.188	.312	.188	.625-24	1.031	.937	1.375	.937	.875	.844	.906	.781
06	.438	.281	.438	.281	.750-20	1.031	1.062	1.375	1.062	1.000	.906	1.094	.906
08	.562	.375	.562	.344	.875-20	1.031	1.188	1.375	1.188	1.125	.969	1.188	1.031
10	.625	.500	.625	.375	1.000-20	1.094	1.312	1.437	1.312	1.250	.969	1.281	1.156
12	.750	.500	.750	.438	1.188-18	1.219	1.562	1.437	1.562	1.375	.969	1.500	1.344
△ 14	.875	.750	.875	.719	1.250-18	N / A	N / A	N / A	N / A	1.500	N / A	N / A	N / A
16	1.000	.844	1.000	.781	1.438-18	1.219	1.750	1.562	1.750	1.625	1.062	1.719	1.594
20	1.250	.938	1.250	.750	1.750-18	1.344	2.250	1.812	2.250	1.750	1.125	2.062	1.906
24	1.375	1.000	1.375	.781	2.000-18	N / A	2.375	2.062	2.375	N / A	1.188	2.312	2.156
28	1.625	1.250	1.625	.969	2.250-16	N / A	2.625	2.062	2.625	N / A	1.719	2.719	2.406
32	1.875	1.500	1.875	1.125	2.500-16	N / A	2.812	2.188	2.812	N / A	1.781	2.969	2.656



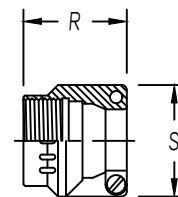
STYLE 1 △
 AS85049/41A CLAMP
 (MS 3057**A)



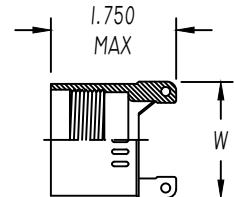
STYLE 2 △
 NUT



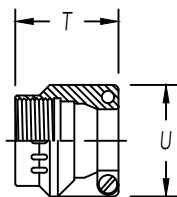
STYLE 3 △
 NON-ENVIRONMENTAL



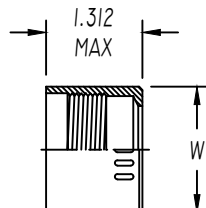
STYLE 3 △
 NUT ENVIRONMENTAL
 (AS85049/1)
 (MS 3057-**B)



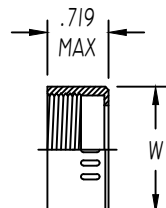
STYLE 3 △
 ENVIRONMENTAL



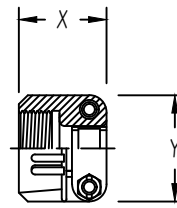
STYLE 4 △
 STRAIN RELIEF ENVIRONMENTAL
 (AS85049/2)
 (MS 3057-**C)



STYLE 4 △
 ENVIRONMENTAL



STYLE 4 △
 NON-ENVIRONMENTAL



STYLE 9 △
 STRAIN-RELIEF CLAMP WITH TELESCOPING SCREWS

NOTES: UNLESS OTHERWISE SPECIFIED

△1 AVAILABLE ONLY ON: A**01, A**30, E**01, E**03, E**04, E**05, E**07, E**21, E**30, & E**33

△2 AVAILABLE ONLY ON: E**15, E**17, E**38, E**40, & E**41

3. CONSULT FACTORY FOR SIZES AND INFORMATION NOT LISTED