



Table 2 - Cable Entry Data

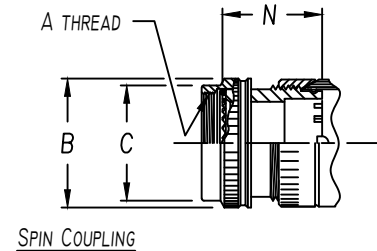
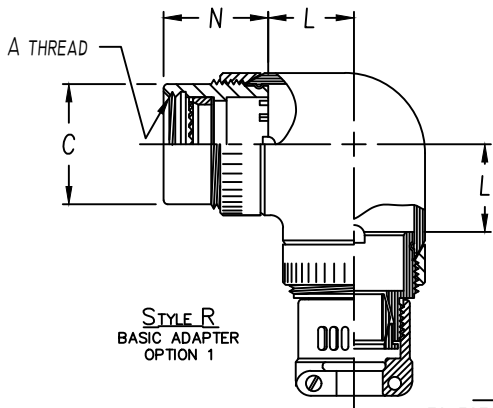
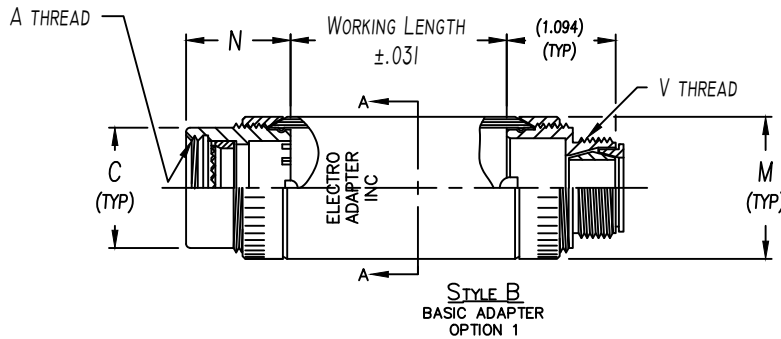
ENTRY ORDER NUMBER	NON ENVIRONMENTAL CABLE RANGE		V UNIFIED THREAD
	MAX	MIN	
03	.250	.156	.500-28
04	.312	.188	.625-24
06	.438	.281	.750-20
08	.562	.344	.875-20
10	.625	.375	1.000-20
12	.750	.438	1.188-18
16	.938	.562	1.438-18
20	1.250	.750	1.750-18
24	1.375	.781	2.000-18
28	1.625	.969	2.250-16
32	1.875	1.125	2.500-16

Table 3 - Length Code Data

CONN CODE NUMBER	N MAX	M ±.031 DIA. BY ACCESSORY ORDER NUMBER			
		1.250	1.469	1.688	1.875
40	1.062	07 - 21	26, 32	37, 47	-
41	1.000	04 - 23	28, 34	39, 44	-
54	.719	05 - 19	24 - 34	39, 44	51
		.750	.875	1.000	1.125

L ±.062 DIA. BY ACCESSORY ORDER NUMBER

OTHER CONNECTOR CODES AVAILABLE
 CONTACT ENGINEERING FOR DETAILS



ONLY AVAILABLE FOR CONNECTOR
 CODES 40, 41, & 54

ASSEMBLY PART NUMBER
 TO ESTABLISH YOUR P/N, USE THE FOLLOWING EXAMPLE

E 41 03 S 23 08 9 08 1 51

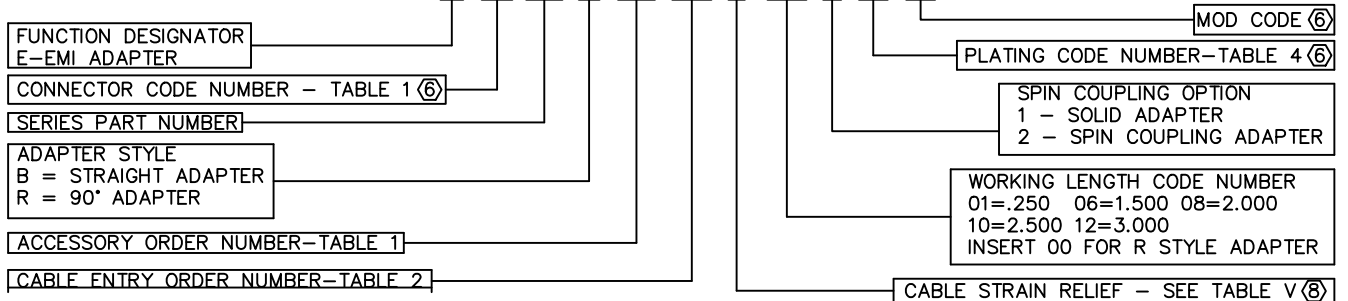


Table 1 - Order Number Data

E * * 03
SHEET 2 OF 2

Accessory Order Number By Connector Code & Shell Size

ORDER NUMBER	MIL-DTL-38999 SERIES III & IV		MIL-DTL-38999 SERIES I & II		MIL-DTL-5015 CRIMP MIL-DTL-26482 SER 2 MIL-DTL-83723 SER III		MIL-C-81703 NAS 1599		ORDER NUMBER
	40	41	54		A	B	C		
	③				UNIFIED THREAD	MAX DIA.	MAX DIA.		
01					.375-32	.750	.531	01	
03					.438-27	.812	.594	03	
04		8, 9			.438-28	.812	.594	04	
05			8 & 8S		.500-20	.875	.656	05	
06					.500-28	.875	.656	06	
07	9, A				M12 x 1.0	.719	.656	07	
08		10, 11		3	.562-24	.844	.719	08	
10			10, 10S, 10SL		.625-24	1.000	.781	10	
11					.625-28	1.000	.781	11	
12	11, B				M15 x 1.0	.844	.781	12	
13		12, 13			.688-24	1.062	.844	13	
15			12 & 12S	7	.750-20	1.125	.906	15	
16	13, C				M18 x 1.0	.969	.906	16	
18		14, 15			.812-20	1.188	.969	18	
19			14 & 14S	12	.875-20	1.250	1.031	19	
20					.875-28	1.250	1.031	20	
21	15, D				M22 x 1.0	1.094	1.031	21	
23		16, 17			.938-20	1.312	1.094	23	
24			16 & 16S	19	1.000-20	1.375	1.156	24	
25					1.000-28	1.375	1.156	25	
26	17, E				M25 x 1.0	1.219	1.156	26	
28		18, 19	18	27	1.062-18	1.438	1.219	28	
29					1.125-18	1.500	1.281	29	
30					1.125-24	1.500	1.281	30	
31					1.125-28	1.500	1.281	31	
32	19, F				M28 x 1.0	1.344	1.281	32	
34		20, 21	20	37	1.188-18	1.562	1.344	34	
35					1.250-18	1.625	1.406	35	
36					1.250-28	1.625	1.406	36	
37	21, G				M31 x 1.0	1.469	1.406	37	
39		22, 23	22		1.312-18	1.688	1.469	39	
40					1.375-18	1.750	1.531	40	
41					1.375-28	1.750	1.531	41	
42	23, H				M34 x 1.0	1.594	1.531	42	
44		24, 25	24		1.438-18	1.812	1.594	44	
45				61	1.500-18	1.875	1.656	45	
46					1.500-28	1.875	1.656	46	
47	25, J				M37 x 1.0	1.719	1.656	47	
48					1.562-18	1.938	1.719	48	
49					1.625-18	2.000	1.781	49	
51			28		1.750-18	2.125	1.906	51	
52					1.875-16	2.250	2.031	52	
53					1.906-18	2.281	2.062	53	
54			32		2.000-18	2.375	2.156	54	
55					2.062-16	2.469	2.219	55	
56					2.062-24	2.469	2.219	56	
57					2.125-16	2.500	2.281	57	
58					2.125-18	2.500	2.281	58	
59			36		2.250-16	2.625	2.406	59	
60					2.312-16	2.719	2.469	60	
61					2.375-16	2.750	2.531	61	
62			40		2.500-16	2.875	2.656	62	

NOTES: UNLESS OTHERWISE SPECIFIED.

1 THREADS ARE RIGHT HAND IN ACCORDANCE WITH FED-STD-H28, CLASS 2B.

③ THREADS NOTED ARE ISO METRIC, CLASS 6H.

5 TABLE 1 LISTS THE MOST USED CONNECTOR CODES. SEE SECTION 11 FOR OTHER CODES AVAILABLE AND COMPLETE CONNECTOR PART NUMBER CROSS REFERENCE.

⑥ SEE SUPPORT DATA SECTION FOR PLATING AND MODIFICATION CODE OPTIONS.

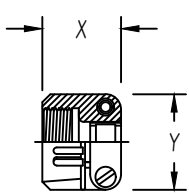
⑧ SEE SUPPORT DATA SECTION FOR TABLE V & AVAILABLE STYLES

REV | C

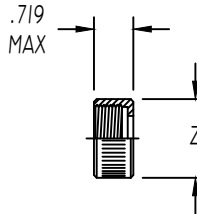


Table 2 - Environmental / Non-Environmental Cable Entry Data

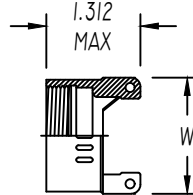
ENTRY ORDER NUMBER	ENVIRONMENTAL		NON ENVIRONMENTAL		V UNIFIED THREAD	R MAX DIM.	S MAX DIM.	T MAX DIM.	U MAX DIM.	W MAX DIM.	X MAX DIM.	Y MAX DIM.	Z MAX DIA.
	GLAND	RANGE	CABLE	RANGE									
	MAX	MIN	MAX	MIN									
△ 03	.250	.156	.250	.156	.500-28	N / A	.812	1.375	.812	N / A	.844	.781	.656
04	.312	.188	.312	.188	.625-24	1.031	.937	1.375	.937	.875	.844	.906	.781
06	.438	.281	.438	.281	.750-20	1.031	1.062	1.375	1.062	1.000	.906	1.094	.906
08	.562	.375	.562	.344	.875-20	1.031	1.188	1.375	1.188	1.125	.969	1.188	1.031
10	.625	.500	.625	.375	1.000-20	1.094	1.312	1.437	1.312	1.250	.969	1.281	1.156
12	.750	.500	.750	.438	1.188-18	1.219	1.562	1.437	1.562	1.375	.969	1.500	1.344
△ 14	.875	.750	.875	.719	1.250-18	N / A	N / A	N / A	N / A	1.500	N / A	N / A	N / A
16	1.000	.844	1.000	.781	1.438-18	1.219	1.750	1.562	1.750	1.625	1.062	1.719	1.594
20	1.250	.938	1.250	.750	1.750-18	1.344	2.250	1.812	2.250	1.750	1.125	2.062	1.906
24	1.375	1.000	1.375	.781	2.000-18	N / A	2.375	2.062	2.375	N / A	1.188	2.312	2.156
28	1.625	1.250	1.625	.969	2.250-16	N / A	2.625	2.062	2.625	N / A	1.719	2.719	2.406
32	1.875	1.500	1.875	1.125	2.500-16	N / A	2.812	2.188	2.812	N / A	1.781	2.969	2.656



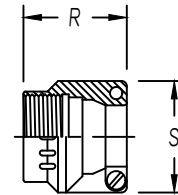
STYLE 1 △
 AS85049/41A CLAMP
 (MS 3057**A)



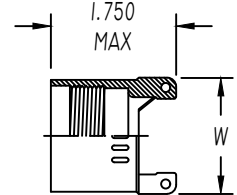
STYLE 2 △
 NUT



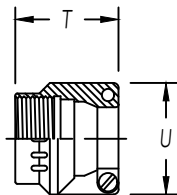
STYLE 3 △
 NON-ENVIRONMENTAL



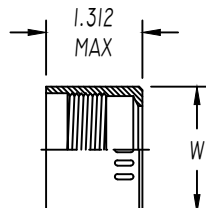
STYLE 3 △
 NUT ENVIRONMENTAL
 (AS85049/1)
 (MS 3057-**B)



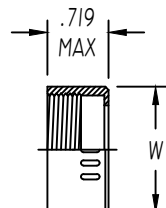
STYLE 3 △
 ENVIRONMENTAL



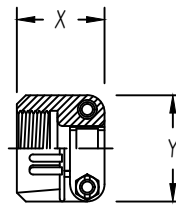
STYLE 4 △
 STRAIN RELIEF ENVIRONMENTAL
 (AS85049/2)
 (MS 3057-**C)



STYLE 4 △
 ENVIRONMENTAL



STYLE 4 △
 NON-ENVIRONMENTAL



STYLE 9 △
 STRAIN-RELIEF CLAMP WITH TELESCOPING SCREWS

NOTES: UNLESS OTHERWISE SPECIFIED

△ AVAILABLE ONLY ON: A**01, A**30, E**01, E**03, E**04, E**05, E**07, E**21, E**30, & E**33

△ AVAILABLE ONLY ON: E**15, E**17, E**38, E**40, & E**41

3. CONSULT FACTORY FOR SIZES AND INFORMATION NOT LISTED