

PART NUMBER			
902-13818			
REVISIONS			
LTR	ECO NUMBER	DRAWN	APPROVED
A	21561	SJDC 04/02/09	GF 4/20/09
B	21590	SJDC 07/24/09	GF 07/24/09

Example Part Number

902-13818-20C55

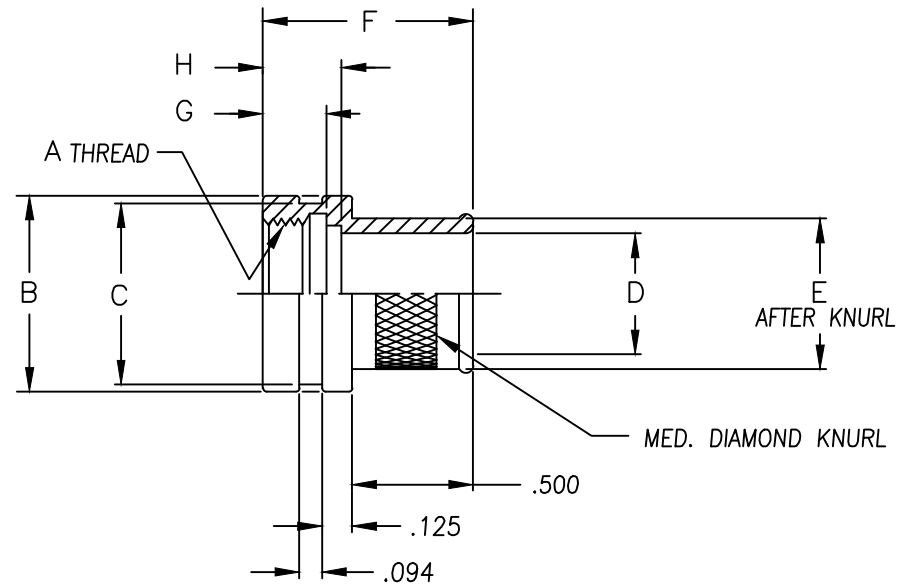
BASIC PART NUMBER

CONNECTOR CODE

DASH NO.	A UNIFIED THD. CLASS 2B	ØB ±.010	(ØC)	(G)	(H)	D ±.005	(E)	F ±.031
08B	.375-32	.500	.438	.250	N/A	.250	.375	.870
08A	.438-27	.562	.500	.188	N/A	.312	.438	
08C	.438-28	.562	.500	.219	.281	.312	.438	
10C	.500-28	.625	.562	.219	.281	.375	.500	
11C	.562-24	.688	.625	.344	.390	.438	.562	
12C	.625-24	.750	.688	.250	N/A	.500	.625	
12A	.688-24	.812	.750	.250	N/A	.562	.688	
14C	.750-20	.875	.812	.250	.296	.625	.750	
16C	.875-20	1.000	.938	.250	.296	.750	.875	
18C	1.000-20	1.125	1.063	.375	.438	.812	.938	
20C	1.125-18	1.250	1.188	.375	.438	1.000	1.125	
20R	1.125-24	1.250	1.188	.344	N/A	1.000	1.125	
22C	1.250-18	1.375	1.312	.375	.438	1.125	1.250	
24C	1.375-18	1.500	1.438	.375	.438	1.375	1.250	
28C	1.625-18	1.750	1.688	.375	.438	1.500	1.625	
32C	1.875-16	2.000	1.938	.375	.438	1.625	1.750	
							.938	

PLATING CODE NUMBER

CODE 10 - PASSIVATE, PER QQ-P-35.
MATERIAL: SST.
CODE 51 - ELECTROLESS NICKEL, PER
MIL-C-26074, CLASS 4, GRADE B.
CODE 55 - CADMIUM, OLIVE DRAB, PER
QQ-P-416, TYPE II, CLASS 3,
OVER ELECTROLESS NICKEL PER
MIL-C-26074 CLASS 3 OR 4,
GRADE B.
FOR ADDITIONAL FINISH OPTIONS,
SEE CATALOG TABLE 4.



NOTES: UNLESS OTHERWISE SPECIFIED

1. ASSEMBLY IDENTIFICATION PER MIL-STD-1285.
2. MATERIAL: ALUMINUM ALLOY

The information disclosed herein is the property of, and a proprietary item originated by ELECTRO ADAPTER, INC. who reserves all patent, proprietary design, use, sale, manufacturing and reproduction rights thereto; except for uses expressly granted to the United States Government and items which are vendor parts, disclosure shall not be made without written consent from ELECTRO ADAPTER, INC.		DRAWN LJ	DATE 03/03/09	ELECTRO ADAPTER, INC. CHATSWORTH, CA. 91311-6189
UNLESS OTHERWISE SPECIFIED DIMENSIONS ARE IN INCHES		CHKD	DATE	
TOLERANCES: ANGLES ± 2° DECIMALS .XX = ± .06 .XXX = ± .031		APVD G. FISH	DATE 03/10/09	DRAWING TITLE ADAPTER, BANDING
DO NOT SCALE DRAWING		RELEASED	DATE 03/10/09	SIZE A CAGE CODE 31461 DRAWING NUMBER 902-13818 REV. B SCALE: NONE 0\SALES\902\13818 SHEET 1 OF 1

PART NUMBER			
902-13821			
REVISIONS			
LTR	ECO NUMBER	DRAWN	APPROVED
A	22216	PADM 2/27/13	..

Example Part Number

902-13821-1656

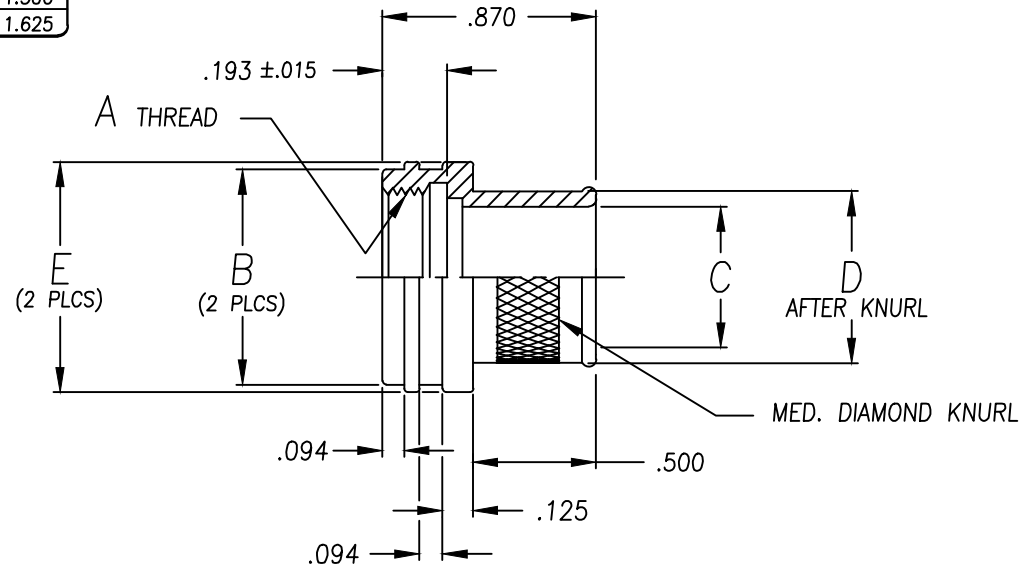
BASIC PART NUMBER

CONNECTOR CODE
MIL-C-26482 SER.1

ORDER NUMBER	SHELL SIZE	A UNIFIED THD. CLASS 2B	ØB ±.010	ØC ±.015	ØD ±.015	ØE ±.010
0 8	8	.438-28	.562	.312	.438	.625
1 0	10	.562-24	.688	.438	.562	.750
1 2	12	.688-24	.812	.562	.688	.875
1 4	14	.812-20	.938	.688	.812	1.000
1 6	16	.938-20	1.062	.812	.938	1.125
1 8	18	1.062-18	1.188	.938	1.062	1.250
2 0	20	1.188-18	1.312	1.062	1.188	1.375
2 2	22	1.312-18	1.438	1.188	1.312	1.500
2 4	24	1.438-18	1.562	1.312	1.438	1.625

PLATING CODE NUMBER

CODE 55 - CADMIUM, OLIVE DRAB, PER QQ-P-416, TYPE II, CLASS 3, OVER ELECTROLESS NICKEL PER MIL-C-26074 CLASS 3 OR 4, GRADE B.
 CODE 56 - ELECTROLESS NICKEL, PER MIL-C-26074, CLASS 4, GRADE A.
 FOR ADDITIONAL FINISH OPTIONS, SEE CATALOG TABLE 4.



NOTES: UNLESS OTHERWISE SPECIFIED

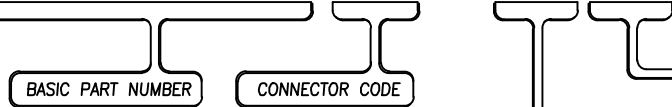
1. ASSEMBLY IDENTIFICATION PER MIL-STD-1285.
2. MATERIAL: ALUMINUM ALLOY

The information disclosed herein is the property of, and a proprietary item originated by ELECTRO ADAPTER, INC., who reserves all patent, proprietary design, use, sale, manufacturing and reproduction rights thereto; except for uses expressly granted to the United States Government and items which are vendor parts, disclosure shall not be made without written consent from ELECTRO ADAPTER, INC.		DRAWN	DATE	ELECTRO ADAPTER, INC. CHATSWORTH, CA. 91311-6189
		LJ	10/21/08	
		CHKD	DATE	DRAWING TITLE ADAPTER, BANDING FOR MIL-DTL-26482 SERIES I CONN
		G. FISH		
		APVD	DATE	SIZE A
			10/21/08	
UNLESS OTHERWISE SPECIFIED DIMENSIONS ARE IN INCHES		10/21/08		CAGE CODE 31461
TOLERANCES: ANGLES ± 2° .xx = ± .06 .xxx = ± .031		RELEASED DATE		DRAWING NUMBER 902-13821
DO NOT SCALE DRAWING				REV. A
				SCALE: NONE
				0\SALES\902\13821
				SHEET 1 OF 1

PART NO.			
902-13840			
REVISIONS			
LTR	ECO NO.	DRAWN	APPR.
D	21566	SJDC 4/28/09	GF 5/3/09
E	22216	PADM 2/27/13	

Example Part Number

902-13840-1656



ORDER NUMBER	SHELL SIZE		A METRIC THD. CLASS 6H	øB ±.015	øC ±.015	øD ±.015	øE ±.015
	COM'L	MIL					
0 8	9	A	M12 X 1.0	.688	.625	.312	.438
1 0	11	B	M15 X 1.0	.812	.750	.438	.562
1 2	13	C	M18 X 1.0	.938	.875	.562	.688
1 4	15	D	M22 X 1.0	1.062	1.000	.688	.812
1 6	17	E	M25 X 1.0	1.188	1.125	.812	.938
1 8	19	F	M28 X 1.0	1.312	1.250	.938	1.062
2 0	21	G	M31 X 1.0	1.438	1.375	1.062	1.188
2 2	23	H	M34 X 1.0	1.562	1.500	1.188	1.312
2 4	25	J	M37 X 1.0	1.688	1.625	1.312	1.438

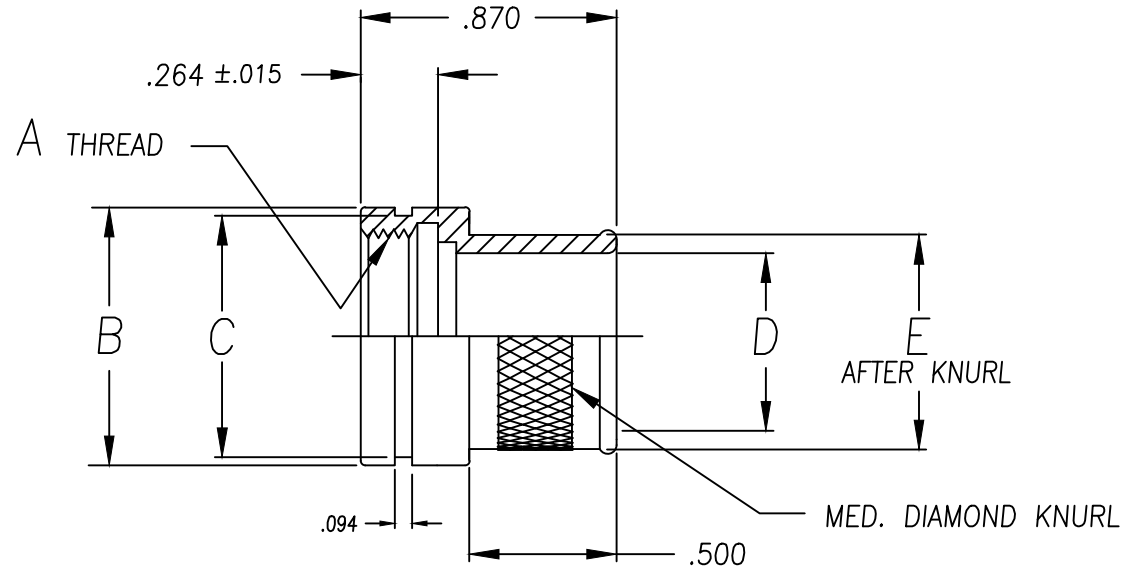
PLATING CODE NUMBER

CODE 10 - PASSIVATE, PER SAE-AMS-2700D (MAT'L:300 SERIES, SST), TYPE 6

CODE 55 - CADMIUM, OLIVE DRAB, PER QQ-P-416, TYPE II, CLASS 3, OVER ELECTROLESS NICKEL PER MIL-C-26074 CLASS 3 OR 4, GRADE B.


CODE 56 - ELECTROLESS NICKEL, PER MIL-C-26074, CLASS 4, GRADE A.

FOR ADDITIONAL FINISH OPTIONS, SEE CATALOG TABLE 4.



NOTES: UNLESS OTHERWISE SPECIFIED

1. ASSEMBLY IDENTIFICATION PER MIL-STD-1285.
2. MATERIAL: ALUMINUM ALLOY

The information disclosed herein is the property of, and a proprietary item originated by ELECTRO ADAPTER, INC., who reserves all patent, proprietary design, use, sale, manufacturing and reproduction rights thereto; except for uses expressly granted to the United States Government and items which are vendor parts, disclosure shall not be made without written consent from ELECTRO ADAPTER, INC.		DRAWN AT PENA	DATE 7/24/04	 ELECTRO ADAPTER, INC. CHATSWORTH, CA. 91311-6189	
UNLESS OTHERWISE SPECIFIED DIMENSIONS ARE IN INCHES		CHKD G. FISH	DATE 7/30/04		DRAWING TITLE ADAPTER, BANDING FOR MIL-DTL-38999 SERIES III & IV CONN
TOLERANCES: ANGLES DECIMALS ± 2° .XX = ± .06 .XXX = ± .031		APVD G. FISH	DATE 7/30/04		
DO NOT SCALE DRAWING		G FISH	7/30/04	SIZE A	
		RELEASED	DATE	CAGE CODE 31461	
				DRAWING NUMBER 902-13840	
				REV. E	
				SCALE: NONE /0/SALES/902/13840 SHEET 1 OF 1	

Example Part Number

902-13841-1656

BASIC PART NUMBER

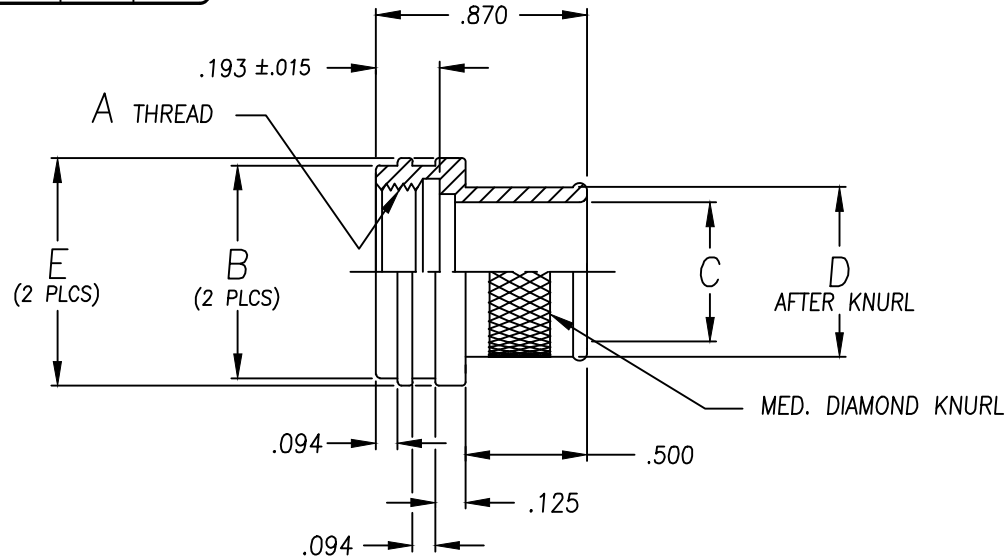
CONNECTOR CODE

PART NUMBER			
902-13841			
REVISIONS			
LTR	ECO NUMBER	DRAWN	APPROVED
B	20824	ATP 9/17/04	C.F. 9/20/04
C	20861	ATP 11/22/04	G.F. 11-23-04
D	20966	C.F. 6-3-05	G.F. 6-3-05
E	22216	PADM 2/27/13	::

ORDER NUMBER	SHELL SIZE		A UNIFIED THD. CLASS 2B	øB ±.010	øC ±.015	øD ±.015	øE ±.010
	SER. II	SER. I					
0 8	8	9	.438-28	.562	.312	.438	.625
1 0	10	11	.562-24	.688	.438	.562	.750
1 2	12	13	.688-24	.812	.562	.688	.875
1 4	14	15	.812-20	.938	.688	.812	1.000
1 6	16	17	.938-20	1.062	.812	.938	1.125
1 8	18	19	1.062-18	1.188	.938	1.062	1.250
2 0	20	21	1.188-18	1.312	1.062	1.188	1.375
2 2	22	23	1.312-18	1.438	1.188	1.312	1.500
2 4	24	25	1.438-18	1.562	1.312	1.438	1.625

PLATING CODE NUMBER

CODE 55 - CADMIUM, OLIVE DRAB, PER QQ-P-416, TYPE II, CLASS 3, OVER ELECTROLESS NICKEL PER MIL-C-26074 CLASS 3 OR 4, GRADE B.
 CODE 56 - ELECTROLESS NICKEL, PER MIL-C-26074, CLASS 4, GRADE A.
 FOR ADDITIONAL FINISH OPTIONS, SEE CATALOG TABLE 4.



NOTES: UNLESS OTHERWISE SPECIFIED

1. ASSEMBLY IDENTIFICATION PER MIL-STD-1285.
2. MATERIAL: ALUMINUM ALLOY


The information disclosed herein is the property of, and a proprietary item originated by ELECTRO ADAPTER, INC., who reserves all patent, proprietary design, use, sale, manufacturing and reproduction rights thereto; except for uses expressly granted to the United States Government and items which are vendor parts, disclosure shall not be made without written consent from ELECTRO ADAPTER, INC.

UNLESS OTHERWISE SPECIFIED DIMENSIONS ARE IN INCHES

TOLERANCES: ANGLES DECIMALS
 ± 2° .XX = ± .06
 .XXX = ± .031

DO NOT SCALE DRAWING

DRAWN	DATE
A.T. PENA	7/27/04
CHKD	DATE
G. FISH	7/30/04
APVD	DATE
	7/30/04
RELEASED	DATE

 ELECTRO ADAPTER, INC. CHATSWORTH, CA. 91311-6189	
DRAWING TITLE	
ADAPTER, BANDING FOR MIL-DTL-38999 SERIES I & II CONN	
SIZE	CAGE CODE
A	31461
DRAWING NUMBER	
902-13841	
SCALE: NONE	REV. E
0\SALES\902\13841	SHEET 1 OF 1

Example Part Number

902-13854-1656

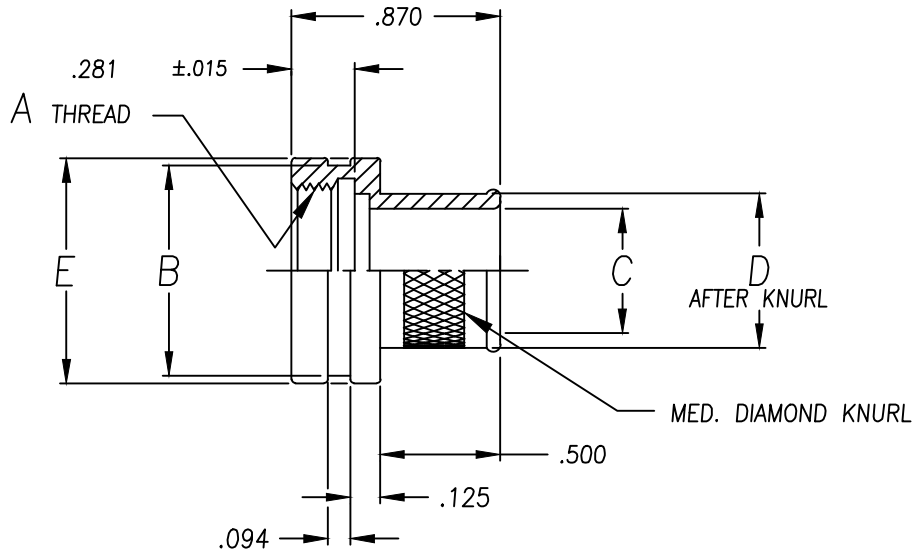
BASIC PART NUMBER

CONNECTOR CODE

PART NO.			
902-13854			
REVISIONS			
LTR	ECO NO.	DRAWN	APPR.
D	21573	SJDC 5/26/09	GF 6/10/09
E	22216	PADM 2/27/13	

ORDER NUMBER	SHELL SIZE		A UNIFIED THD. CLASS 2B	ØB ±.010	ØC ±.015	ØD ±.015	ØE ±.010
	3	4					
0 3	3	-	.562-24	.688	.438	.562	.750
0 8	-	8,8S	.500-20	.625	.375	.500	.688
1 0	-	10,10S,10SL	.625-24	.750	.500	.625	.812
1 2	7	12,12S	.750-20	.875	.625	.750	.938
1 4	12	14,14S	.875-20	1.000	.750	.875	1.062
1 6	19	16,16S	1.000-20	1.125	.875	1.000	1.188
1 8	27	18	1.062-18	1.188	.938	1.062	1.250
2 0	37	20	1.188-18	1.312	1.062	1.188	1.375
2 2	-	22	1.312-18	1.438	1.188	1.312	1.500
2 4	-	24	1.438-18	1.562	1.312	1.438	1.625
2 8	-	28	1.750-18	1.875	1.625	1.750	1.938
3 2	-	32	2.000-18	2.125	1.875	2.000	2.188
3 6	-	36	2.250-16	2.375	2.125	2.250	2.438
4 0	-	40	2.500-16	2.625	2.375	2.500	2.688

PLATING CODE NUMBER
 CODE 55 - CADMIUM, OLIVE DRAB, PER QQ-P-416, TYPE II, CLASS 3, OVER ELECTROLESS NICKEL PER MIL-C-26074 CLASS 3 OR 4, GRADE B.
 CODE 56 - ELECTROLESS NICKEL, PER MIL-C-26074, CLASS 4, GRADE A.
 FOR ADDITIONAL FINISH OPTIONS, SEE CATALOG TABLE 4.




NOTES: UNLESS OTHERWISE SPECIFIED

1. ASSEMBLY IDENTIFICATION PER MIL-STD-1285.

2. MATERIAL: ALUMINUM ALLOY

3. SHELL SIZE PER MIL-C-81703 (SERIES 3).

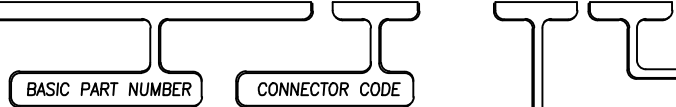
4. SHELL SIZE PER MIL-C-5015H (3400 SERIES) MIL-C-26482 (SERIES 2) MIL-C-83723 (SERIES I & II) & NAS1599.

The information disclosed herein is the property of, and a proprietary item originated by ELECTRO ADAPTER, INC., who reserves all patent, proprietary design, use, sale, manufacturing and reproduction rights thereto; except for uses expressly granted to the United States Government and items which are vendor parts, disclosure shall not be made without written consent from ELECTRO ADAPTER, INC.		DRAWN A.T. PENA	DATE 07/27/04	 ELECTRO ADAPTER, INC. CHATSWORTH, CA. 91311-6189	
UNLESS OTHERWISE SPECIFIED DIMENSIONS ARE IN INCHES		CHKD GF	DATE 07/30/04		DRAWING TITLE ADAPTER, BANDING FOR MIL-DTL-26482 SERIES II MIL-C-5015, MS34** CONN
TOLERANCES: ANGLES DECIMALS ± 2° .XX = ± .06 .XXX = ± .031		APVD GF	DATE 07/30/04		
DO NOT SCALE DRAWING		GF	07/30/04	SIZE CAGE CODE DRAWING NUMBER REV. A 31461 902-13854 E	
		RELEASED	DATE	SCALE: NONE /O/SALES/902/13854 SHEET 1 OF 1	

PART NO.			
902-13861			
REVISIONS			
LTR	ECO NO.	DRAWN	APPR.

Example Part Number

902-13861-1656



ORDER NUMBER	SHELL SIZE		A UNIFIED THD. CLASS 2B	øB ±.015	øC ±.015	øD ±.015	øE ±.015	F ±.015	G ±.015
	S/S	CODE							
0 8	8	A	.500-28	.688	.625	.312	.438	.312	.531
1 0	10	B	.625-28	.812	.750	.438	.562		
1 4	14	D	.875-28	1.062	1.000	.688	.812		
1 6	16	E	1.000-28	1.188	1.125	.812	.938		
1 8	18	F	1.125-28	1.312	1.250	.938	1.062	.348	.576
2 0	20	G	1.250-28	1.438	1.375	1.062	1.188		
2 2	22	H	1.375-28	1.562	1.500	1.188	1.312		
2 4	24	J	1.500-28	1.688	1.625	1.312	1.438		

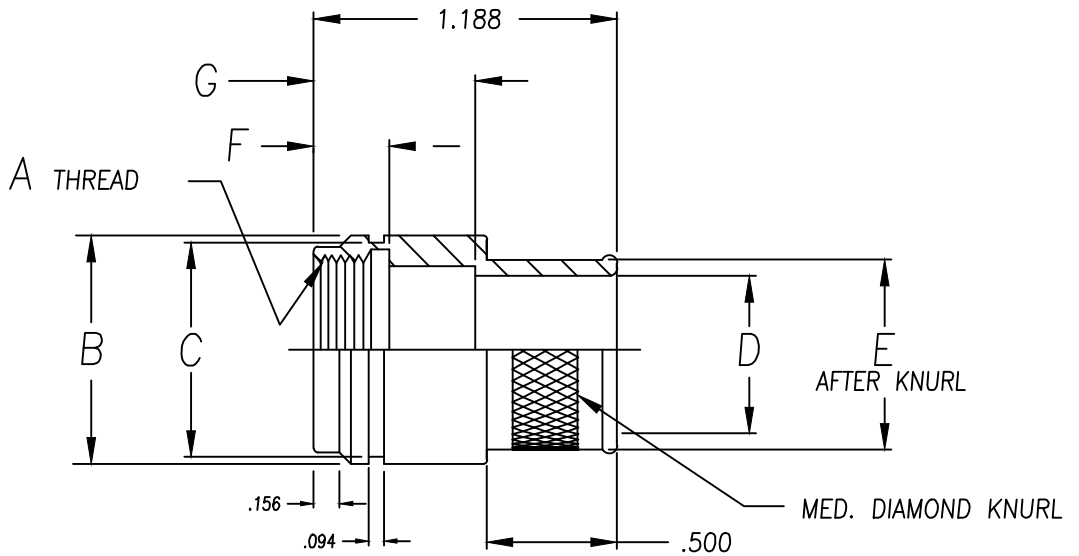
PLATING CODE NUMBER

03 = CADMIUM, OLIVE DRAB, PER SAE AMS-QQ-P-416, TYPE II, CLASS 3


55 = CADMIUM, OLIVE DRAB, PER SAE AMS-QQ-P-416, TYPE II, CLASS 3, OVER ELECTROLESS NICKEL PER AMS-C-26074, CLASS 3 OR 4, GRADE B

56 = ELECTROLESS NICKEL PER SAE AMS-2404F, CLASS 3 OR 4, GRADE A.

FOR ADDITIONAL FINISH OPTIONS, SEE CATALOG TABLE 4.



- NOTES: UNLESS OTHERWISE SPECIFIED
1. ASSEMBLY IDENTIFICATION PER MIL-STD-1285.
 2. MATERIAL: ALUMINUM ALLOY

The information disclosed herein is the property of, and a proprietary item originated by ELECTRO ADAPTER, INC., who reserves all patent, proprietary design, use, sale, manufacturing and reproduction rights thereto; except for uses expressly granted to the United States Government and items which are vendor parts, disclosure shall not be made without written consent from ELECTRO ADAPTER, INC.		DRAWN	DATE	 ELECTRO ADAPTER, INC. CHATSWORTH, CA. 91311-6189
UNLESS OTHERWISE SPECIFIED DIMENSIONS ARE IN INCHES		SJDC	01/27/09	
TOLERANCES: ANGLES DECIMALS ± 2° .XX = ± .06 .XXX = ± .031		CHKD	DATE	
DO NOT SCALE DRAWING		APVD	DATE	DRAWING TITLE
		GF	01/28/10	ADAPTER, BANDING FOR MIL-C-81511 CONNECTOR
		GF	01/28/10	SIZE CAGE CODE DRAWING NUMBER REV.
		RELEASED	DATE	A 31461 902-13861
				SCALE: NONE /O/SALES/902/13861 SHEET 1 OF 1

Example Part Number
902-13864-1656

BASIC PART NUMBER

CONNECTOR CODE

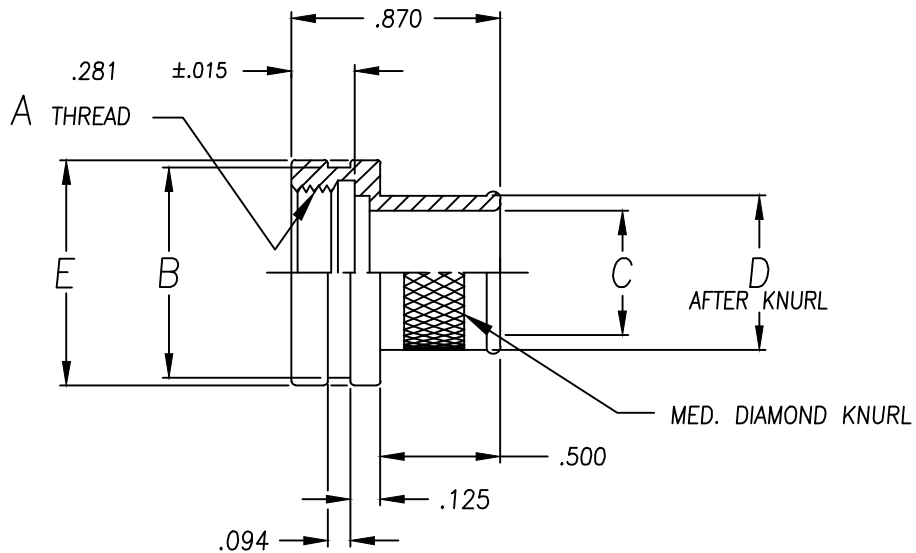
ORDER NUMBER	SHELL SIZE	A UNIFIED THD. CLASS 2B	ØB ±.005	ØC ±.005	ØD ±.005	ØE ±.005
1 2	10SL & 12	.625-24	.688	.500	.625	.750
1 4	14	.750-20	.813	.625	.750	.875
1 6	16	.875-20	.938	.750	.875	1.000
1 8	18	1.000-20	1.063	.875	1.000	1.125
2 0	20	1.125-18	1.188	1.000	1.125	1.250
2 2	22	1.250-18	1.312	1.125	1.250	1.375
2 4	24	1.375-18	1.438	1.250	1.375	1.500
2 8	28	1.625-18	1.688	1.500	1.625	1.750
3 2	32	1.875-16	1.938	1.750	1.875	2.000
3 6	36	2.062-16	2.126	1.938	2.063	2.188
4 0	40	2.312-16	2.375	2.188	2.312	2.437

PLATING CODE NUMBER

CODE 55 - CADMIUM, OLIVE DRAB, PER QQ-P-416, TYPE II, CLASS 3, OVER ELECTROLESS NICKEL PER MIL-C-26074 CLASS 3 OR 4, GRADE B.

CODE 56 - ELECTROLESS NICKEL, PER MIL-C-26074, CLASS 4, GRADE A.


FOR ADDITIONAL FINISH OPTIONS, SEE CATALOG TABLE 4.



PART NO.			
902-13864			
REVISIONS			
LTR	ECO NO.	DRAWN	APPR.
.			
.			

NOTES: UNLESS OTHERWISE SPECIFIED

1. ASSEMBLY IDENTIFICATION PER MIL-STD-1285.
2. MATERIAL: ALUMINUM ALLOY

The information disclosed herein is the property of, and a proprietary item originated by ELECTRO ADAPTER, INC., who reserves all patent, proprietary design, use, sale, manufacturing and reproduction rights thereto; except for uses expressly granted to the United States Government and items which are vendor parts, disclosure shall not be made without written consent from ELECTRO ADAPTER, INC.		DRAWN PADM	DATE 2/13/13	 ELECTRO ADAPTER, INC. CHATSWORTH, CA. 91311-6189	
UNLESS OTHERWISE SPECIFIED DIMENSIONS ARE IN INCHES		CHKD GF	DATE 2/13/13		DRAWING TITLE ADAPTER, BANDING FOR ITT CANNON (VEAM) CIR SERIES
TOLERANCES: ANGLES DECIMALS ± 2' .XX = ± .06 .XXX = ± .031		APVD GF	DATE 2/13/13		SIZE CAGE CODE DRAWING NUMBER REV. A 31461 902-13864
DO NOT SCALE DRAWING		RELEASED	DATE	SCALE: NONE /0/SALES/902/13864 SHEET 1 OF 1	



STANDARD FINISHES

PLATING CODE	FINISH	SPECIFICATION	ACCESSORY MATERIAL	CORROSION RESISTANCE (HRS)	ROHS COMPLIANT
0 3	CADIUM PLATE, OLIVE DRAB	SAE AMS-QQ-P-416, TYPE II, CLASS 3	ALUMINUM	96	NO
1 0	PASSIVATE	SAE AMS-QQ-P-35, (AS85049 CODE S)	STAINLESS STEEL	1000	YES
1 2	ZINC NICKEL, BLACK	ASTM B841	ALUMINUM	500	YES
1 3	ZINC COBALT, OLIVE DRAB	ASTM B840-99	ALUMINUM	96	NO
1 4	ZINC COBALT, BLACK	ASTM B840-99	ALUMINUM	96	NO
2 1	IRIDITE, 14-2, GOLD	IRIDITE, NUMBER 14-2 PER MIL-DTL-5541 CL 3	ALUMINUM	96	NO
3 4	ANODIZE, BLACK	MIL-A-8625, TYPE II, CL 3 (AS85049 CODE A)	ALUMINUM	1000	YES
3 5	ANODIZE ,GREY	MIL-A-8625, TYPE II, CLASS 2	ALUMINUM	500	YES
4 4	ANODIZE, HARD, BLACK	MIL-A-8625, TYPE II, CLASS 2	ALUMINUM	500	YES
4 5	ANODIZE, HARD, GREY	MIL-A-8625, TYPE II, CLASS 2	ALUMINUM	1000	YES
4 8	ELECTROLESS NICKEL	AMS-2404F, CLASS 4, GRADE B	STAINLESS STEEL	48	NO
5 1	ELECTROLESS NICKEL	AMS-2404F, CLASS 4, GRADE B	ALUMINUM	48	NO
5 5	CADIUM PLATE, OLIVE DRAB, OVER ELECTROLESS NICKEL	SAE AMS-QQ-P-416, TYPE II, CLASS 3, OVER ELECTROLESS NICKEL, PER AMS-2404F (AS85049 CODE W)	ALUMINUM	1000	NO
5 6	ELECTROLESS NICKEL	AMS-2404F, CLASS 4, GRADE A	ALUMINUM	96	NO
5 6 R	ELECTROLESS NICKEL	AMS-2404F, CLASS 4, GRADE A	ALUMINUM	48	YES
5 7	ELECTROLESS NICKEL	AMS-2404F, CLASS 4, GRADE A (AS85049 CODE N)	ALUMINUM	96	NO
64	CADIUM PLATE, OLIVE DRAB, OVER ELECTROLESS NICKEL	SAE AMS-QQ-P-416, TYPE II, CLASS 3, OVER ELECTROLESS NICKEL, PER AMS-2404F (SELECTIVE PLATING REF AS85049 CODE P)	ALUMINUM	1000	NO
85	PASSIVATED	SAE AMS-QQ-P-35	316 SST	1000	YES
87	BEAD BLASTED	N/A	NI. ALUM. BRONZE	1000	YES

NOTES: UNLESS OTHERWISE SPECIFIED

1. CORROSION RESISTANCE IS SPECIFIED FOR SALT SPRAY IN ACCORDANCE WITH AS85049

CONSULT FACTORY FOR OTHER FINISHES

FINISHES ARE APPLICABLE TO THE CONNECTOR ACCESSORIES ONLY AND EXCLUDE FASTENERS AND OTHER HARDWARE

4. EMI/RFI ACCESSORIES ARE SUPPLIED WITH CONDUCTIVE FINISHES ONLY

5. ANODIZE NOT SUITABLE FOR EMI SHIELDING OR GROUNDING APPLICATIONS

6. ALL THE CONDUCTIVE FINISHES USED ON ALUMINUM CAN ALSO BE USED ON BRASS (CONSULT FACTORY)

CADMIUM/NICKEL INTERFACE SHALL BE COATED WITH POLYSULFIDE SEALANT (REF FIGURE 2 BELOW)

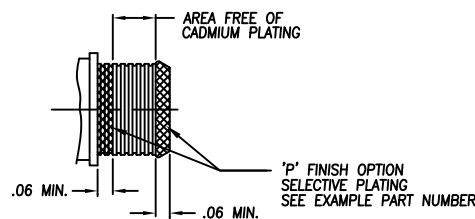


FIGURE 2



STANDARD MATERIALS

COMPONENT	MATERIAL	SPECIFICATION
MACHINED COMPONENTS	ALUMINUM STAINLESS STEEL (300 SERIES) BRASS NICKEL ALUMINUM BRONZE	ASTM B221, ASTM B211 (MFG OPTION) AMS-QQ-S-763, QQ-S-764 (MFG OPTION) QQ-B-626 ASTMB150 (AMS4640)
DIE CAST COMPONENTS	ALUMINUM	ASTM B 85
FASTENERS AND HARDWARE	STAINLESS STEEL (300 SERIES) STEEL BRASS	AMS-QQ-S-763 SAE20, QQ-S-634, QQ-S-637 QQ-B-626
ELASTOMERIC SEALS	SILICONE BUNA-N NEOPRENE	ZZ-R-765B, MIL-R-25988 AMS-3209 MIL-R-3065

NOTES: UNLESS OTHERWISE SPECIFIED

1. THE SPECIFIED MATERIALS ARE STANDARD FOR THE MAJORITY OF CONNECTOR ACCESSORIES
2. CONSULT FACTORY FOR OTHER MATERIALS
3. FOR DOCUMENTS LISTED WITHIN THIS CATALOG WITH OUT A TOLERANCE SHOWN SHALL HAVE TOLERANCES AS FALLOWED:
 - .X = ±.2
 - .XX = ±.12
 - .XXX = ± .062
 - X° = ±10°