

Example Part Number

902-13818-20C55

BASIC PART NUMBER CONNECTOR CODE

PLATING CODE NUMBER
 CODE 10 - PASSIVATE, PER QQ-P-35.
 MATERIAL: SST.
 CODE 51 - ELECTROLESS NICKEL, PER MIL-C-26074, CLASS 4, GRADE B.
 CODE 55 - CADMIUM, OLIVE DRAB, PER QQ-P-416, TYPE II, CLASS 3, OVER ELECTROLESS NICKEL PER MIL-C-26074 CLASS 3 OR 4, GRADE B.
 FOR ADDITIONAL FINISH OPTIONS, SEE CATALOG TABLE 4.

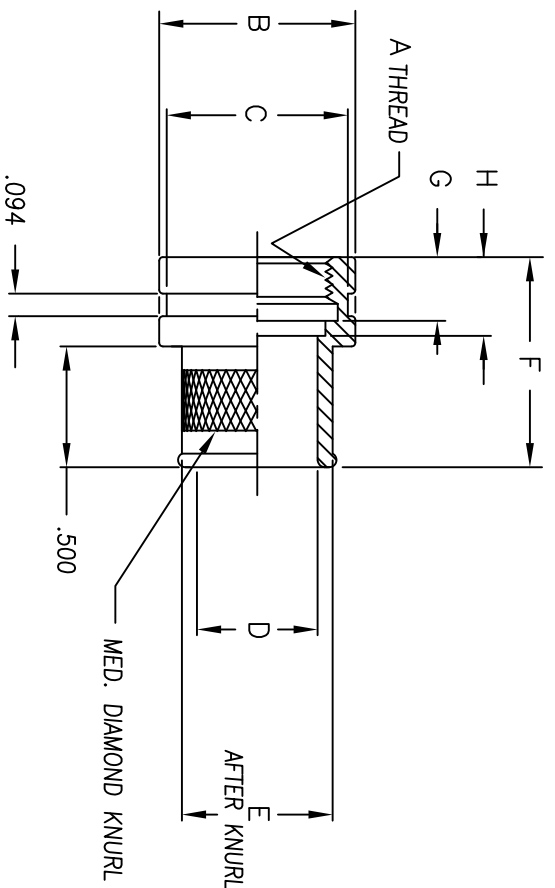
DASH NO.	A UNIFIED THD. CLASS 2B	ØB ±.010	(ØC)	(G)	(H)	D ±.005	(E)	F ±.031
08B	.375-32	.500	.438	.250	N/A	.250	.375	
08A	.438-27	.562	.500	.188	N/A	.312	.438	
08C	.438-28	.562	.500	.219	.281	.312	.438	
10C	.500-28	.625	.562	.219	.281	.375	.500	
11C	.562-24	.688	.625	.344	.390	.438	.562	.870
12C	.625-24	.750	.688	.250	N/A	.500	.625	
12A	.688-24	.812	.750	.250	N/A	.562	.688	
14C	.750-20	.875	.812	.250	.296	.625	.750	
16C	.875-20	1.000	.938	.250	.296	.750	.875	
18C	1.000-20	1.125	1.063	.375	.438	.812	.938	
20C	1.125-18	1.250	1.188	.375	.438	1.000	1.125	
20R	1.125-24	1.250	1.188	.344	N/A	1.000	1.125	
22C	1.250-18	1.375	1.312	.375	.438	1.125	1.250	1.000
24C	1.375-18	1.500	1.438	.375	.438	1.375	1.250	
28C	1.625-18	1.750	1.688	.375	.438	1.500	1.625	
32C	1.875-16	2.000	1.938	.375	.438	1.625	1.750	.938

- NOTES: UNLESS OTHERWISE SPECIFIED
- ASSEMBLY IDENTIFICATION PER MIL-STD-1285.
 - MATERIAL: ALUMINUM ALLOY



SCAN HERE FOR MORE INFO

PART NUMBER		REVISIONS	
902-13818		LTR	ECO NUMBER
A	21561	DRWN	SJDC
B	21590	DATE	04/02/09
C	22608	DATE	07/24/09



The information disclosed herein is the property of, and a proprietary item originated by ELECTRO ADAPTER, INC. who reserves all patent, proprietary design, use, sale, manufacturing and reproduction rights to the United States Government and items be made without written consent from ELECTRO ADAPTER, INC.

UNLESS OTHERWISE SPECIFIED DIMENSIONS ARE IN INCHES

TOLERANCES: ANGLES .xx DECIMALS .xxx = ± .06 .xxx = ± .031

DO NOT SCALE DRAWING

DRAWN	DATE
LJ	03/03/09
CHKD	DATE
APVD	DATE
G. FISH	03/10/09

ELECTRO ADAPTER, INC.
 CHATSWORTH, CA 91311-6189

DRAWING TITLE: ADAPTER, BANDING

SIZE: A CASE CODE: A 31461 DRAWING NUMBER: 902-13818

SCALE: NONE 0 SALES 90213818 SHEET 1 OF 1

Example Part Number

902-13821-1656

BASIC PART NUMBER

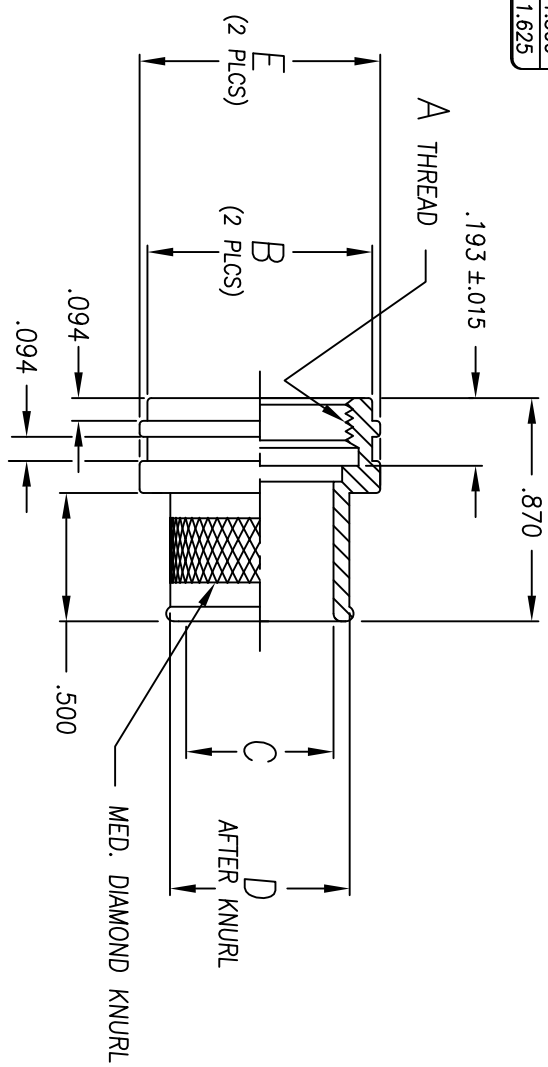
CONNECTOR CODE
MIL-C-26482 SER.1

PLATING CODE NUMBER

CODE 55 - CADMIUM, OLIVE DRAB, PER QQ-P-416, TYPE II, CLASS 3, OVER ELECTROLESS NICKEL PER MIL-C-26074 CLASS 3 OR 4, GRADE B.
CODE 56 - ELECTROLESS NICKEL, PER MIL-C-26074, CLASS 4, GRADE A.
FOR ADDITIONAL FINISH OPTIONS, SEE CATALOG TABLE 4.

ORDER NUMBER	SHELL SIZE	A UNIFIED THD. CLASS 2B	ØB ±.010	ØC ±.015	ØD ±.015	ØE ±.010
0 8	8	.438-28	.562	.312	.438	.625
1 0	10	.562-24	.688	.438	.562	.750
1 2	12	.688-24	.812	.562	.688	.875
1 4	14	.812-20	.938	.688	.812	1.000
1 6	16	.938-20	1.062	.812	.938	1.125
1 8	18	1.062-18	1.188	.938	1.062	1.250
2 0	20	1.188-18	1.312	1.062	1.188	1.375
2 2	22	1.312-18	1.438	1.188	1.312	1.500
2 4	24	1.438-18	1.562	1.312	1.438	1.625

PART NUMBER		REVISIONS	
902-13821		LTR	ECO NUMBER
		A	22216
		B	22608
DATE	DRAWN	DATE	APPROVED
10/21/08	ADPM	2/27/13	GF
	SJDC	06-07-16	GF



NOTES: UNLESS OTHERWISE SPECIFIED

1. ASSEMBLY IDENTIFICATION PER MIL-STD-1285.
2. MATERIAL: ALUMINUM ALLOY



SCAN HERE FOR MORE INFO

The information disclosed herein is the property of, and a proprietary item originated by ELECTRO ADAPTER, INC., who reserves all patent, proprietary design, use, sale, manufacturing and reproduction rights hereto, except for uses expressly granted to the United States Government and items which the vendor parts, discature and items which the vendor parts, discature and items ELECTRO ADAPTER, INC.

UNLESS OTHERWISE SPECIFIED DIMENSIONS ARE IN INCHES

TOLERANCES: ANGLES ± Z' DECIMALS .xx = ± .06 .xxx = ± .031

DRAWN	DATE	CHKD	DATE
LJ	10/21/08	G. FISH	DATE
APVD	DATE	DATE	DATE
RELEASED	DATE	DATE	DATE

ELECTRO ADAPTER, INC.
CHATSWORTH, CA. 91311-6189

DRAWING TITLE
ADAPTER, BANDING
FOR MIL-DTL-26482
SERIES I CONN

SIZE CAGE CODE
A | 51461 | DRAWING NUMBER
SCALE: NONE | 0\SALES\902\13821 | SHEET 1 OF 1

REV. B

DO NOT SCALE DRAWING

Example Part Number

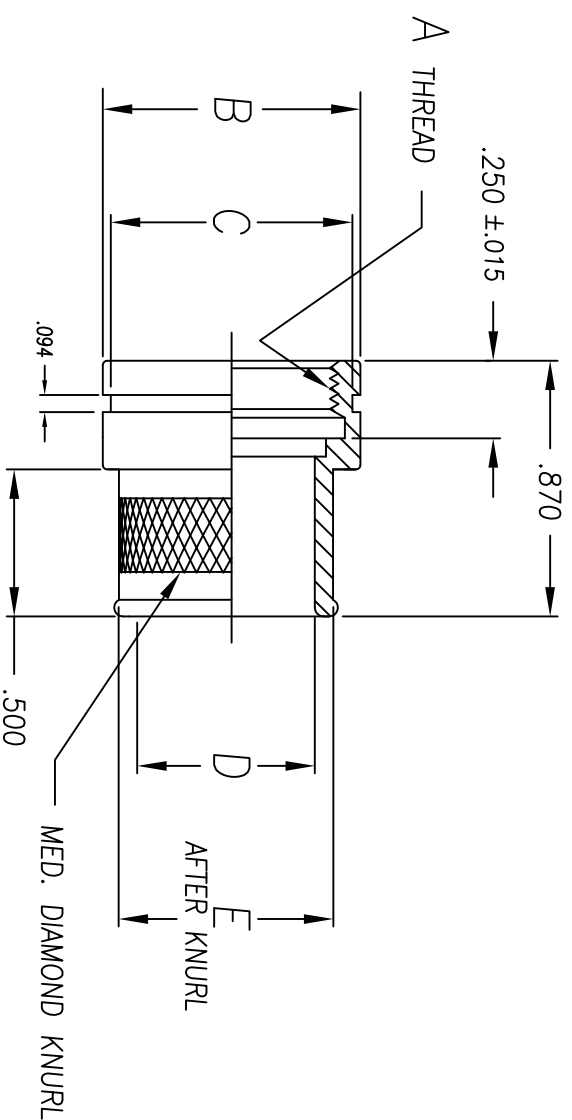
902-13840-1656

BASIC PART NUMBER

CONNECTOR CODE

ORDER NUMBER	SHELL SIZE COWL MIL	A METRIC THD. CLASS 6H	ØB	ØC	ØD	ØE	
			±.015	±.015	±.015	±.015	
0 8	9	A	M12 X 1.0	.688	.625	.312	.438
1 0	11	B	M15 X 1.0	.812	.750	.438	.562
1 2	13	C	M18 X 1.0	.938	.875	.562	.688
1 4	15	D	M22 X 1.0	1.062	1.000	.688	.812
1 6	17	E	M25 X 1.0	1.188	1.125	.812	.938
1 8	19	F	M28 X 1.0	1.312	1.250	.938	1.062
2 0	21	G	M31 X 1.0	1.438	1.375	1.062	1.188
2 2	23	H	M34 X 1.0	1.562	1.500	1.188	1.312
2 4	25	J	M37 X 1.0	1.688	1.625	1.312	1.438

PLATING CODE NUMBER
 CODE 10 - PASSIVATE, PER SAE-AMS-2700D (MATL.300 SERIES, SST), TYPE 6
 CODE 55 - CADMIUM, OLIVE DRAB, PER QQ-P-416, TYPE II, CLASS 3, OVER ELECTROLESS NICKEL PER MIL-C-26074 CLASS 3 OR 4, GRADE B.
 CODE 56 - ELECTROLESS NICKEL, PER MIL-C-26074, CLASS 4, GRADE A.
 FOR ADDITIONAL FINISH OPTIONS, SEE CATALOG TABLE 4.



- NOTES: UNLESS OTHERWISE SPECIFIED
1. ASSEMBLY IDENTIFICATION PER MIL-STD-1285.
 2. MATERIAL: ALUMINIUM ALLOY



<p>SCAN HERE FOR MORE INFO</p>		<p>UNLESS OTHERWISE SPECIFIED DIMENSIONS ARE IN INCHES</p>		<p>DATE 7/24/04</p>	
<p>THE INFORMATION DISCLOSED HEREIN IS THE PROPERTY OF, AND A PROPRIETARY ITEM ORIGINATED BY ELECTRO ADAPTER, INC., WHO RESERVES ALL PATENT, PROPRIETARY DESIGN, USE, SALE, MANUFACTURING AND REPRODUCTION RIGHTS IN THE UNITED STATES. THESE TERMS AND CONDITIONS WHICH ARE VENDOR PARTS DISCLOSURE SHALL NOT BE MADE WITHOUT WRITTEN CONSENT FROM ELECTRO ADAPTER, INC.</p>		<p>DRAWN AT PENNA</p>		<p>DATE 7/30/04</p>	
<p>UNLESS OTHERWISE SPECIFIED DIMENSIONS ARE IN INCHES</p>		<p>CHKD G. FISH</p>		<p>DATE 7/30/04</p>	
<p>TOLERANCES: ANGLES ± Z DECIMALS .XX ± .06 .XX ± .031</p>		<p>APVD G. FISH</p>		<p>DATE 7/30/04</p>	
<p>DO NOT SCALE DRAWING</p>		<p>RELEASED</p>		<p>DATE 7/30/04</p>	
<p>SCALE: NONE</p>		<p>SIZE A</p>		<p>DATE 7/30/04</p>	
<p>CAGE CODE 31461</p>		<p>DRAWING NUMBER 902-13840</p>		<p>REV. F</p>	
<p>FOR MIL-DTL-38999 SERIES III & IV CONN</p>		<p>DRAWING TITLE ADAPTER, BANDING</p>		<p>SHEET 1 OF 1</p>	
<p>CHAITSWORTH, CA. 91311-6189</p>		<p>ELECTRO ADAPTER, INC.</p>		<p>REVISIONS</p>	
<p>ECO NO.</p>		<p>DRAWN</p>		<p>APPR.</p>	
<p>22216</p>		<p>2-27-13</p>		<p>12/27/13</p>	
<p>22608</p>		<p>6-7-16</p>		<p>06-07-16</p>	

PART NO. 902-13840

LTR	ECO NO.	DRAWN	APPR.
E	22216	2-27-13	12/27/13
F	22608	6-7-16	06-07-16

Example Part Number

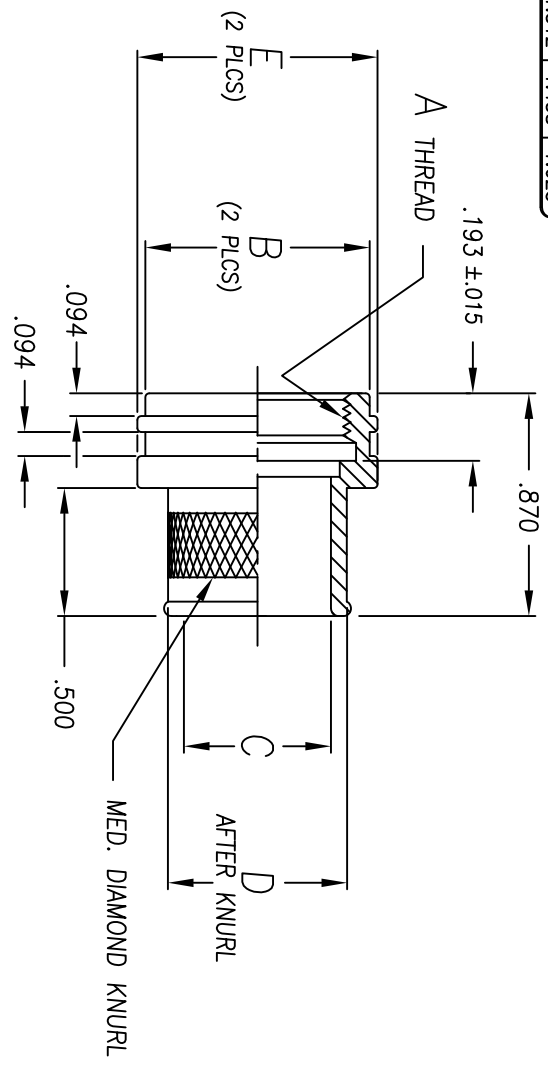
902-13841-1656

BASIC PART NUMBER CONNECTOR CODE

PART NUMBER		REVISIONS	
902-13841		LTR	ECO NUMBER
		E	22216
		F	22608
DRAWN	APPROVED	PADM	GF
2/27/13	2/27/13	SJDC	GF
6-7-16	06-07-16		

ORDER NUMBER	SHELL SIZE		A UNIFIED THD. CLASS 2B	ØB ±.010	ØC ±.015	ØD ±.015	ØE ±.010
	SER. II	SER. I					
0 8	8	9	.438-28	.562	.312	.438	.625
1 0	10	11	.562-24	.688	.438	.562	.750
1 2	12	13	.688-24	.812	.562	.688	.875
1 4	14	15	.812-20	.938	.688	.812	1.000
1 6	16	17	.938-20	1.062	.812	.938	1.125
1 8	18	19	1.062-18	1.188	.938	1.062	1.250
2 0	20	21	1.188-18	1.312	1.062	1.188	1.375
2 2	22	23	1.312-18	1.438	1.188	1.312	1.500
2 4	24	25	1.438-18	1.562	1.312	1.438	1.625

PLATING CODE NUMBER
 CODE 55 - CADMIUM, OLIVE DRAB, PER QQ-P-416, TYPE II, CLASS 3, OVER ELECTROLESS NICKEL PER MIL-C-26074 CLASS 3 OR 4, GRADE B.
 CODE 56 - ELECTROLESS NICKEL, PER MIL-C-26074, CLASS 4, GRADE A.
 FOR ADDITIONAL FINISH OPTIONS, SEE CATALOG TABLE 4.



- NOTES: UNLESS OTHERWISE SPECIFIED
- ASSEMBLY IDENTIFICATION PER MIL-STD-1285.
 - MATERIAL: ALUMINUM ALLOY



SCAN HERE FOR MORE INFO

The information disclosed herein is the property of, and a proprietary item originated by ELECTRO ADAPTER, INC., who reserves all patent, proprietary design, use, sale, manufacturing and reproduction rights hereto, except for uses expressly granted to the United States Government and items which are without patent, copyright, or trademark of ELECTRO ADAPTER, INC.

UNLESS OTHERWISE SPECIFIED DIMENSIONS ARE IN INCHES

TOLERANCES: ANGLES ± ° ' " DECIMALS ± .06 ± .031

DRAWN	DATE
A.T. PEÑA	7/27/04
CHKD	DATE
G. FISH	7/30/04
APVD	DATE
RELEASED	7/30/04

ELECTRO ADAPTER, INC.
 CHATSWORTH, CA. 91311-6189

DRAWING TITLE
 ADAPTER, BANDING
 FOR MIL-DTL-38999
 SERIES I & II CONN

SIZE: A | GAGE CODE: 31461 | DRAWING NUMBER: 902-13841 | REV. F

SCALE: NONE | SALES: 902\13841 | SHEET: 1 OF 1

Example Part Number

902-13864-1656

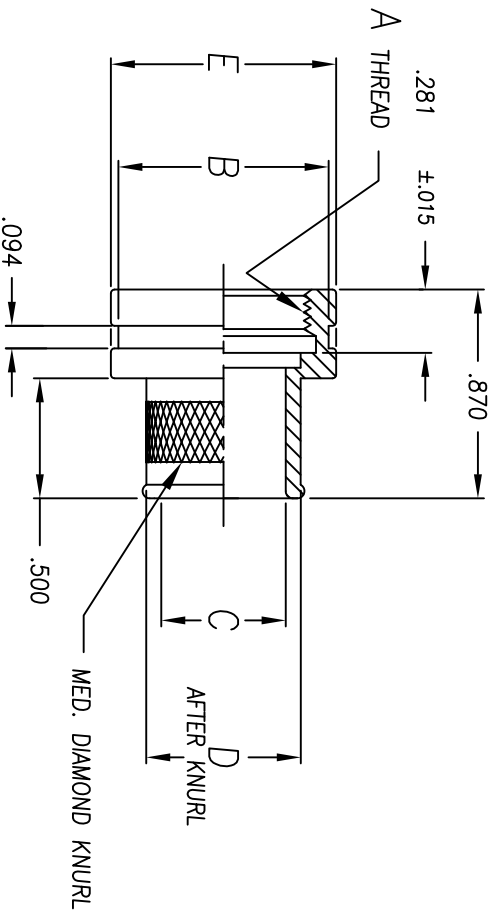
BASIC PART NUMBER

CONNECTOR CODE

ORDER NUMBER	SHELL SIZE	A UNIFIED THD. CLASS 2B	ØB ±.005	ØC ±.005	ØD ±.005	ØE ±.005
1 2	10SL & 12	.625-24	.688	.500	.625	.750
1 4	14	.750-20	.813	.625	.750	.875
1 6	16	.875-20	.938	.750	.875	1.000
1 8	18	1.000-20	1.063	.875	1.000	1.125
2 0	20	1.125-18	1.188	1.000	1.125	1.250
2 2	22	1.250-18	1.312	1.125	1.250	1.375
2 4	24	1.375-18	1.438	1.250	1.375	1.500
2 8	28	1.625-18	1.688	1.500	1.625	1.750
3 2	32	1.875-16	1.938	1.750	1.875	2.000
3 6	36	2.062-16	2.126	1.938	2.063	2.188
4 0	40	2.312-16	2.375	2.188	2.312	2.437

PLATING CODE NUMBER

CODE 55 - CADMIUM, OLIVE DRAB, PER QQ-P-416, TYPE II, CLASS 3, OVER ELECTROLESS NICKEL PER MIL-C-26074 CLASS 3 OR 4, GRADE B.
 CODE 56 - ELECTROLESS NICKEL, PER MIL-C-26074, CLASS 4, GRADE A.
 FOR ADDITIONAL FINISH OPTIONS, SEE CATALOG TABLE 4.



PART NO.

902-13864

REVISIONS

LTR	ECO NO.	DRAWN	APPR.
A	22608	5/16	06/07/16

NOTES: UNLESS OTHERWISE SPECIFIED

- ASSEMBLY IDENTIFICATION PER MIL-STD-1285.
- MATERIAL: ALUMINUM ALLOY



SCAN HERE FOR MORE INFO

The information disclosed herein is the property of, and a proprietary item originated by ELECTRO ADAPTER, INC., who reserves all patent, proprietary design, use, sale, manufacturing and reproduction rights in the United States. Government items which are vendor parts disclosure shall not be made without written consent from ELECTRO ADAPTER, INC.

UNLESS OTHERWISE SPECIFIED DIMENSIONS ARE IN INCHES
 TOLERANCES: ANGLES .XX = ±.06
 Z .XX = ±.031
 DO NOT SCALE DRAWINGS

DRAWN	DATE	CHKD	DATE	APVD	DATE
PADM	2/13/13	GF	2/13/13	GF	2/13/13
RELEASED	DATE	RELEASED	DATE	RELEASED	DATE



ELECTRO ADAPTER, INC.
 CHATSWORTH, CA. 91311-6189

DRAWING TITLE
ADAPTER, BANDING FOR ITT CANNON (VEAM) CIR SERIES

SIZE	CAGE CODE	DRAWING NUMBER	REV.
A	31461	902-13864	A
SCALE: NONE	/0/SALES/902/13864	SHEET 1 OF 1	

Example Part Number

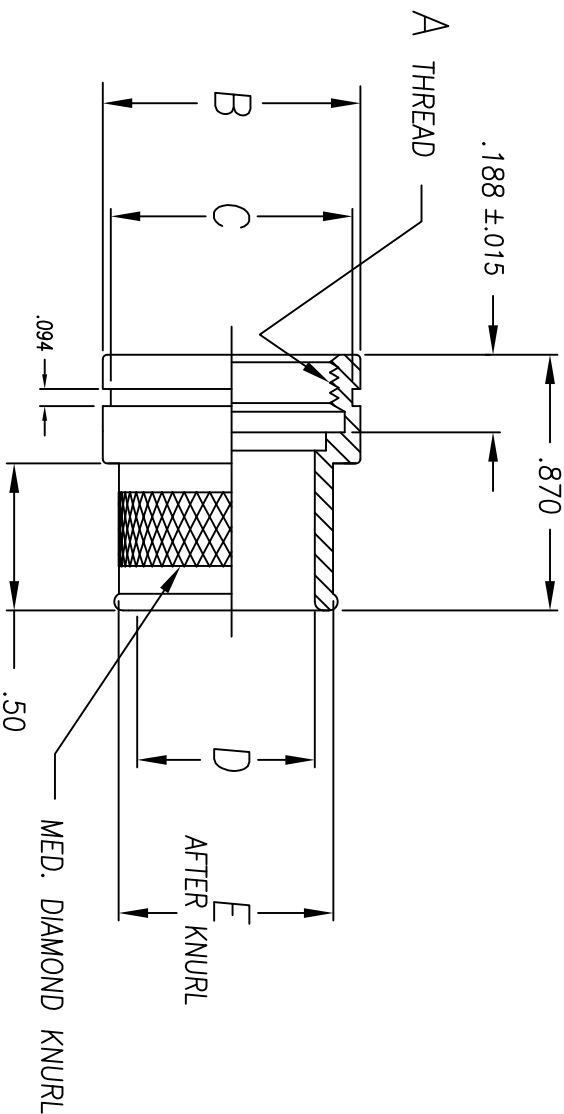
902-13870-1656

BASIC PART NUMBER

CONNECTOR CODE

ORDER NUMBER	A UNIFIED THD. CLASS 2B	ØB ±.015	ØC ±.015	ØD ±.015	ØE ±.015
0 5	.250-.32	.375	.344	.188	.312
0 6	.312-.32	.406	.375	.250	.375
1 1	.375-.28	.469	.438	.281	.406
0 7	.438-.28	.562	.531	.281	.406
0 8	.500-.28	.594	.562	.375	.500
0 9	.562-.24	.625	.594	.406	.531
1 0	.625-.24	.719	.688	.500	.625
1 2	.688-.24	.812	.781	.531	.656
1 3	.750-.20	.875	.844	.594	.719
1 4	.938-.20	1.000	.969	.781	.906

PLATING CODE NUMBER
 CODE 10 - PASSIVATE, PER SAE-AMS-2700D (MATL.300 SERIES, SST), TYPE 6
 CODE 55 - CADMIUM, OLIVE DRAB, PER QQ-P-416, TYPE II, CLASS 3, OVER ELECTROLESS NICKEL PER MIL-C-26074 CLASS 3 OR 4, GRADE B.
 CODE 56 - ELECTROLESS NICKEL, PER MIL-C-26074, CLASS 4, GRADE A.
 FOR ADDITIONAL FINISH OPTIONS, SEE CATALOG TABLE 4.



NOTES: UNLESS OTHERWISE SPECIFIED

1. ASSEMBLY IDENTIFICATION PER MIL-STD-1285.
2. MATERIAL: ALUMINUM ALLOY / SST (REF FINISH)
3. FINISH: SEE EXAMPLE PART NUMBER

The information disclosed herein is the property of, and a proprietary item originated by ELECTRO ADAPTER, INC., who reserves all patent, proprietary design, use, sale, manufacturing and reproduction rights in the United States. Cases, components and items which are vendor parts, disclosure shall not be made without written consent from ELECTRO ADAPTER, INC.

UNLESS OTHERWISE SPECIFIED DIMENSIONS ARE IN INCHES	TOLERANCES: ANGLES ± Z XX.XX = ±.06 XX = ±.031
APVD	GF
CHKD	GF
DATE	DATE
1-4-15	1-6-15

ELECTRO ADAPTER, INC.
 CHATSWORTH, CA. 91311-6189

MINIATURE ADAPTER, BANDING
 FOR SPL MINIATURE 38999
 (MKID - STANDARD UN THREAD)

SIZE A CAGE CODE 31461 DRAWING NUMBER 902-13870 REV. -

SCALE: NONE /0/SALES/802/13870 SHEET 1 OF 1

PART NO. 902-13870			
REVISIONS			
LTR	ECO NO.	DRAWN	APPR.
-			



STANDARD FINISHES

PLATING CODE	FINISH	SPECIFICATION	ACCESSORY MATERIAL	CORROSION RESISTANCE (HRS)	ROHS COMPLIANT
0 3	CADIUM PLATE, OLIVE DRAB	SAE AMS-QQ-P-416, TYPE II, CLASS 3	ALUMINUM	96	NO
1 0	PASSIVATE	SAE AMS-QQ-P-35, (AS85049 CODE S)	STAINLESS STEEL	1000	YES
1 2	ZINC NICKEL, BLACK	ASTM B841	ALUMINUM	500	YES
1 3	ZINC COBALT, OLIVE DRAB	ASTM B840-99	ALUMINUM	96	NO
1 4	ZINC COBALT, BLACK	ASTM B840-99	ALUMINUM	96	NO
2 1	IRIDITE, 14-2, GOLD	IRIDITE, NUMBER 14-2 PER MIL-DTL-5541 CL 3	ALUMINUM	96	NO
3 4	ANODIZE, BLACK	MIL-A-8625, TYPE II, CL 3 (AS85049 CODE A)	ALUMINUM	1000	YES
3 5	ANODIZE ,GREY	MIL-A-8625, TYPE II, CLASS 2	ALUMINUM	500	YES
4 4	ANODIZE, HARD, BLACK	MIL-A-8625, TYPE II, CLASS 2	ALUMINUM	500	YES
4 5	ANODIZE, HARD, GREY	MIL-A-8625, TYPE II, CLASS 2	ALUMINUM	1000	YES
4 8	ELECTROLESS NICKEL	AMS-2404F, CLASS 4, GRADE B	STAINLESS STEEL	48	NO
5 1	ELECTROLESS NICKEL	AMS-2404F, CLASS 4, GRADE B	ALUMINUM	48	NO
5 5	CADIUM PLATE, OLIVE DRAB, OVER ELECTROLESS NICKEL	SAE AMS-QQ-P-416, TYPE II, CLASS 3, OVER ELECTROLESS NICKEL, PER AMS-2404F (AS85049 CODE W)	ALUMINUM	1000	NO
5 6	ELECTROLESS NICKEL	AMS-2404F, CLASS 4, GRADE A	ALUMINUM	96	NO
5 6 R	ELECTROLESS NICKEL	AMS-2404F, CLASS 4, GRADE A	ALUMINUM	48	YES
5 7	ELECTROLESS NICKEL	AMS-2404F, CLASS 4, GRADE A (AS85049 CODE N)	ALUMINUM	96	NO
64	CADIUM PLATE, OLIVE DRAB, OVER ELECTROLESS NICKEL	SAE AMS-QQ-P-416, TYPE II, CLASS 3, OVER ELECTROLESS NICKEL, PER AMS-2404F (SELECTIVE PLATING REF AS85049 CODE P)	ALUMINUM	1000	NO
85	PASSIVATED	SAE AMS-QQ-P-35	316 SST	1000	YES
87	BEAD BLASTED	N/A	NI. ALUM. BRONZE	1000	YES

NOTES: UNLESS OTHERWISE SPECIFIED

1. CORROSION RESISTANCE IS SPECIFIED FOR SALT SPRAY IN ACCORDANCE WITH AS85049

CONSULT FACTORY FOR OTHER FINISHES

FINISHES ARE APPLICABLE TO THE CONNECTOR ACCESSORIES ONLY AND EXCLUDE FASTENERS AND OTHER HARDWARE

4. EMI/RFI ACCESSORIES ARE SUPPLIED WITH CONDUCTIVE FINISHES ONLY

5. ANODIZE NOT SUITABLE FOR EMI SHIELDING OR GROUNDING APPLICATIONS

6. ALL THE CONDUCTIVE FINISHES USED ON ALUMINUM CAN ALSO BE USED ON BRASS (CONSULT FACTORY)

CADMIUM/NICKEL INTERFACE SHALL BE COATED WITH POLYSULFIDE SEALANT (REF FIGURE 2 BELOW)

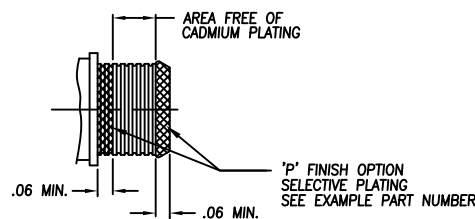


FIGURE 2



STANDARD MATERIALS

COMPONENT	MATERIAL	SPECIFICATION
MACHINED COMPONENTS	ALUMINUM STAINLESS STEEL (300 SERIES) BRASS NICKEL ALUMINUM BRONZE	ASTM B221, ASTM B211 (MFG OPTION) AMS-QQ-S-763, QQ-S-764 (MFG OPTION) QQ-B-626 ASTMB150 (AMS4640)
DIE CAST COMPONENTS	ALUMINUM	ASTM B 85
FASTENERS AND HARDWARE	STAINLESS STEEL (300 SERIES) STEEL BRASS	AMS-QQ-S-763 SAE20, QQ-S-634, QQ-S-637 QQ-B-626
ELASTOMERIC SEALS	SILICONE BUNA-N NEOPRENE	ZZ-R-765B, MIL-R-25988 AMS-3209 MIL-R-3065

NOTES: UNLESS OTHERWISE SPECIFIED

1. THE SPECIFIED MATERIALS ARE STANDARD FOR THE MAJORITY OF CONNECTOR ACCESSORIES
2. CONSULT FACTORY FOR OTHER MATERIALS
3. FOR DOCUMENTS LISTED WITHIN THIS CATALOG WITH OUT A TOLERANCE SHOWN SHALL HAVE TOLERANCES AS FALLOWED:
 - .X = $\pm .2$
 - .XX = $\pm .12$
 - .XXX = $\pm .062$
 - X° = $\pm 10^\circ$