

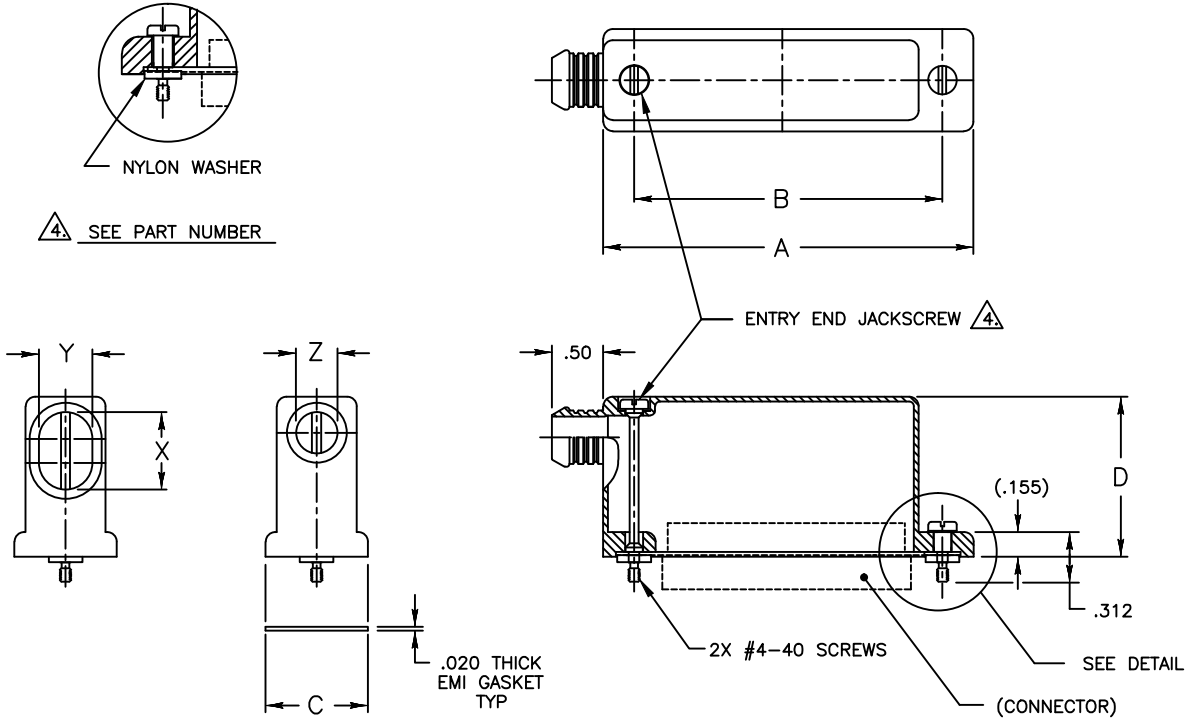


ELECTRO ADAPTER INC.
 CHATSWORTH, CALIFORNIA, USA 91311
 PHONE (818) 998-1198
 FAX (818) 709-5773

**SECTION 3 - RECTANGULAR ADAPTER
 EMI / RFI, BANDING TERMINATION,
 90° SIDE ENTRY
 MIL - DTL - 24308 , D-SUB**

901-899R

SHEET 1 OF 1



Example Part Number

901-899R3713356*

BASIC ADAPTER NO. ADAPTER STYLE R-90° ADAPTER

| CONNECTOR SHELL SIZE | | | |
|----------------------|---------|---------|---------|
| SHELL SIZE | A ±.030 | B ±.005 | C ±.030 |
| 9 | 1.366 | .984 | .640 |
| 15 | 1.694 | 1.312 | .640 |
| 25 | 2.241 | 1.852 | .640 |
| 37 | 2.882 | 2.500 | .640 |
| 50 | 2.778 | 2.406 | .750 |

| HEIGHT CODE | | |
|-------------|--------|------------------------|
| HEIGHT CODE | D ±.03 | MAX. AVAIL. ENTRY CODE |
| 0 | 1.00 | 11 |
| 1 | 1.25 | 11 |
| 2 | 1.50 | 12 |
| 3 | 1.75 | 13 |
| 4 | 2.00 | ALL |

PLATING CODE NUMBER
 CODE 56 - ELECTROLESS NICKEL, PER SAE AMS-2704F WITH IRDITE CONVERSION
 FOR ADDITIONAL FINISH OPTIONS, SEE CATALOG TABLE 4.

JACKSCREW TYPE

BLANK = 1 MALE FILLISTER
 H = 1 MALE HEX SOCKET NAS1352C04-5
 J = 1 FEMALE JACKPOST
 N = JACKSCREWS & WASHERS NOT REQUIRED
 G = 1 MALE HEX SOCKET NAS1352C04-5 LESS GASKET

| ENTRY CODE | | | | | | |
|------------|----------|---------|---------|-------------------------------------|-------------------|--------------------|
| ENTRY CODE | ØZ ±.010 | Y ±.010 | X ±.010 | MAX WIRE ACCOMODATION 20 AWG 22 AWG | AVAIL. SHELL SIZE | AVAIL. HEIGHT CODE |
| 07 | .227 | N/A | N/A | 7 10 | ALL | ALL |
| 10 | .438 | N/A | N/A | 10 20 | ALL | ALL |
| 11 | N/A | .375 | .625 | 18 24 | ALL | ALL |
| 12 | N/A | .442 | .750 | 28 38 | 15-50 | 2-4 |
| 13 | N/A | .442 | .875 | 36 50 | 25-50 | 3-4 |
| 14 | N/A | .466 | 1.125 | 52 70 | 37-50 | 4 |

- NOTES: UNLESS OTHERWISE SPECIFIED.
- ASSEMBLY IDENTIFICATION PER MIL-STD-1285.
 - MATERIAL: BACKSHELL: ALUMINUM ALLOY.
GASKET: ALUMINUM WEAVE-NEOPRENE IMPREGNATED.
JACKSCREWS, 300 SERIES SST.
 - WIRE ACCOMODATION BASIS, MIL-W-16878/4.
20 AWG = .062 MAX DIA.
22 AWG = .054 MAX DIA.
 - SCREWS ARE CAPTIVATED WITH NYLON WASHERS.
ENTRY END JACKSCREW ALWAYS SUPPLIED WITH STRAIGHT SCREWDRIVER SLOT.
 - TOLERANCE FOR ENTRY CODE 07 IS -.000/+.005
 - BREAK SHARP EDGES .005-.015



STANDARD FINISHES

| PLATING CODE | FINISH | SPECIFICATION | ACCESSORY MATERIAL | CORROSION RESISTANCE (HRS) | ROHS COMPLIANT |
|--------------|---|---|--------------------|----------------------------|----------------|
| 0 3 | CADIUM PLATE, OLIVE DRAB | SAE AMS-QQ-P-416, TYPE II, CLASS 3 | ALUMINUM | 96 | NO |
| 1 0 | PASSIVATE | SAE AMS-QQ-P-35, (AS85049 CODE S) | STAINLESS STEEL | 1000 | YES |
| 1 2 | ZINC NICKEL, BLACK | ASTM B841 | ALUMINUM | 500 | YES |
| 1 3 | ZINC COBALT, OLIVE DRAB | ASTM B840-99 | ALUMINUM | 96 | NO |
| 1 4 | ZINC COBALT, BLACK | ASTM B840-99 | ALUMINUM | 96 | NO |
| 2 1 | IRIDITE, 14-2, GOLD | IRIDITE, NUMBER 14-2 PER MIL-DTL-5541 CL 3 | ALUMINUM | 96 | NO |
| 3 4 | ANODIZE, BLACK | MIL-A-8625, TYPE II, CL 3 (AS85049 CODE A) | ALUMINUM | 1000 | YES |
| 3 5 | ANODIZE ,GREY | MIL-A-8625, TYPE II, CLASS 2 | ALUMINUM | 500 | YES |
| 4 4 | ANODIZE, HARD, BLACK | MIL-A-8625, TYPE II, CLASS 2 | ALUMINUM | 500 | YES |
| 4 5 | ANODIZE, HARD, GREY | MIL-A-8625, TYPE II, CLASS 2 | ALUMINUM | 1000 | YES |
| 4 8 | ELECTROLESS NICKEL | AMS-2404F, CLASS 4, GRADE B | STAINLESS STEEL | 48 | NO |
| 5 1 | ELECTROLESS NICKEL | AMS-2404F, CLASS 4, GRADE B | ALUMINUM | 48 | NO |
| 5 5 | CADIUM PLATE, OLIVE DRAB, OVER ELECTROLESS NICKEL | SAE AMS-QQ-P-416, TYPE II, CLASS 3, OVER ELECTROLESS NICKEL, PER AMS-2404F (AS85049 CODE W) | ALUMINUM | 1000 | NO |
| 5 6 | ELECTROLESS NICKEL | AMS-2404F, CLASS 4, GRADE A | ALUMINUM | 96 | NO |
| 5 6 R | ELECTROLESS NICKEL | AMS-2404F, CLASS 4, GRADE A | ALUMINUM | 48 | YES |
| 5 7 | ELECTROLESS NICKEL | AMS-2404F, CLASS 4, GRADE A (AS85049 CODE N) | ALUMINUM | 96 | NO |
| 64 | CADIUM PLATE, OLIVE DRAB, OVER ELECTROLESS NICKEL | SAE AMS-QQ-P-416, TYPE II, CLASS 3, OVER ELECTROLESS NICKEL, PER AMS-2404F (SELECTIVE PLATING REF AS85049 CODE P) | ALUMINUM | 1000 | NO |
| 85 | PASSIVATED | SAE AMS-QQ-P-35 | 316 SST | 1000 | YES |
| 87 | BEAD BLASTED | N/A | NI. ALUM. BRONZE | 1000 | YES |

NOTES: UNLESS OTHERWISE SPECIFIED

1. CORROSION RESISTANCE IS SPECIFIED FOR SALT SPRAY IN ACCORDANCE WITH AS85049

CONSULT FACTORY FOR OTHER FINISHES

FINISHES ARE APPLICABLE TO THE CONNECTOR ACCESSORIES ONLY AND EXCLUDE FASTENERS AND OTHER HARDWARE

4. EMI/RFI ACCESSORIES ARE SUPPLIED WITH CONDUCTIVE FINISHES ONLY

5. ANODIZE NOT SUITABLE FOR EMI SHIELDING OR GROUNDING APPLICATIONS

6. ALL THE CONDUCTIVE FINISHES USED ON ALUMINUM CAN ALSO BE USED ON BRASS (CONSULT FACTORY)

CADMIUM/NICKEL INTERFACE SHALL BE COATED WITH POLYSULFIDE SEALANT (REF FIGURE 2 BELOW)

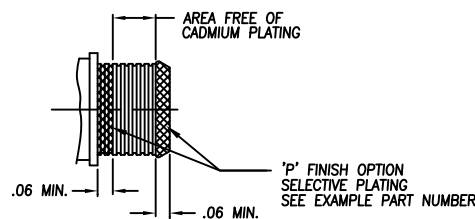


FIGURE 2



STANDARD MATERIALS

| COMPONENT | MATERIAL | SPECIFICATION |
|------------------------|---|--|
| MACHINED COMPONENTS | ALUMINUM STAINLESS STEEL (300 SERIES) BRASS NICKEL ALUMINUM BRONZE | ASTM B221, ASTM B211 (MFG OPTION) AMS-QQ-S-763, QQ-S-764 (MFG OPTION) QQ-B-626 ASTMB150 (AMS4640) |
| DIE CAST COMPONENTS | ALUMINUM | ASTM B 85 |
| FASTENERS AND HARDWARE | STAINLESS STEEL (300 SERIES) STEEL BRASS | AMS-QQ-S-763 SAE20, QQ-S-634, QQ-S-637 QQ-B-626 |
| ELASTOMERIC SEALS | SILICONE BUNA-N NEOPRENE | ZZ-R-765B, MIL-R-25988 AMS-3209 MIL-R-3065 |

NOTES: UNLESS OTHERWISE SPECIFIED

1. THE SPECIFIED MATERIALS ARE STANDARD FOR THE MAJORITY OF CONNECTOR ACCESSORIES
2. CONSULT FACTORY FOR OTHER MATERIALS
3. FOR DOCUMENTS LISTED WITHIN THIS CATALOG WITH OUT A TOLERANCE SHOWN SHALL HAVE TOLERANCES AS FALLOWED:
 - .X = $\pm .2$
 - .XX = $\pm .12$
 - .XXX = $\pm .062$
 - X° = $\pm 10^\circ$