


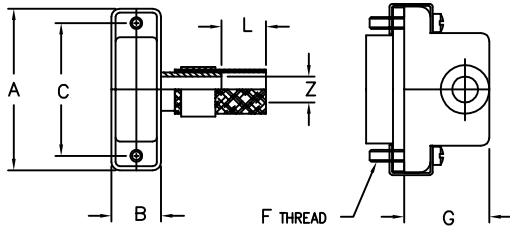


**ELECTRO ADAPTER INC.**  
 CHATSWORTH, CALIFORNIA, USA 91311  
 PHONE (818) 998-1198  
 FAX (818) 709-5773

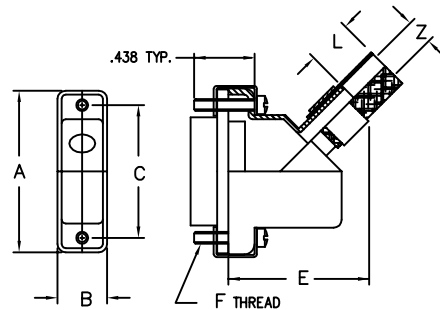
**RECTANGULAR ADAPTER**   
**MAGNEFORMED SHIELD TERMINATION**  
**STRAIGHT, 45°, & 90° ENTRY**  
**MIL - DTL - 83513, /1, /2, /3, & /4, MICRO D**

**901-866**

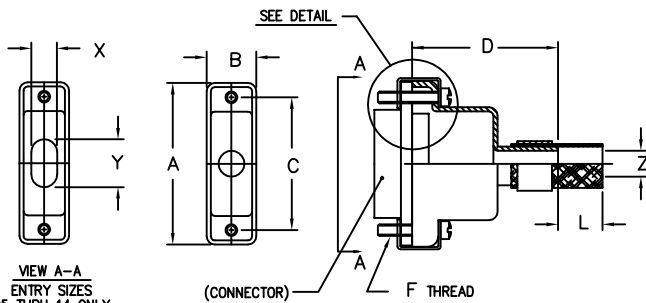
SHEET 1 OF 1



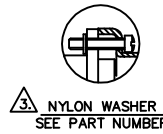
**STYLE R**



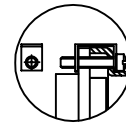
**STYLE A**



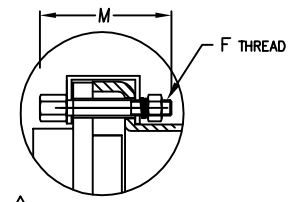
**STYLE S**



**3** NYLON WASHER  
SEE PART NUMBER



**4** RETENTION CLIP  
SEE PART NUMBER



**6** FEMALE JACK POST  
SEE PART NUMBER  
(J) M = (.73)

*Example Part Number*

**901-866S25030655 \* C**

BASIC ADAPTER NO.

**ADAPTER STYLE**  
 S = STRAIGHT ADAPTER  
 A = 45° ADAPTER  
 R = 90° ADAPTER

ADD 'C' FOR ADAPTER SUPPLIED WITH SCREW RETENTION CLIPS, OMIT IF NOT REQUIRED. 

**PLATING CODE NUMBER**  
 CODE 55 - CADMIUM PER AMS-QQ-P-416, TYPE II, CLASS 3, OVER ELECTROLESS NICKEL PER AMS-2404F  
 CODE 56 - ELECTROLESS NICKEL PER AMS-2404F

**LENGTH CODE "L"**  
 LENGTH IN 1 INCH INCREMENTS  
 6 INCH MINIMUM ORDER LENGTH  
 00 - IF SHIELD NOT REQUIRED

**JACKSCREW TYPE**  
 F = 2 MALE FILLISTER (REF AN500D2-7)  
 H = 2 MALE HEX SOCKET (REF NAS1352C02-7)  
 J = 2 FEMALE JACKPOST (REF 10-000-0050)  
 OMIT IF NOT REQUIRED

**CONNECTOR ORDER NUMBER**

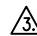
SHELL SIZE	A ±.010	B ±.010	C ±.010	D ±.020	E MAX	F UNIFIED THD	G ±.031	MAX ENTRY
0 9	.775	.360	.565	.750	1.00	2-56UNC-2A	.607	05
1 5	.925	.360	.715	.880	1.03	2-56UNC-2A	.643	07
2 1	1.075	.360	.865	1.000	1.05	2-56UNC-2A	.677	08
2 5	1.175	.360	.965	1.060	1.09	2-56UNC-2A	.718	08
3 1	1.325	.360	1.115	1.120	1.13	2-56UNC-2A	.726	14
3 7	1.475	.360	1.265	1.160	1.16	2-56UNC-2A	.744	14
5 1	1.425	.400	1.215	1.190	1.25	2-56UNC-2A	.828	14
5 1-2	1.825	.360	1.615	1.190	1.25	2-56UNC-2A	.828	14
1 0 0	2.160	.450	1.800	1.250	1.32	4-40UNC-2A	.948	14


**CABLE ENTRY ORDER NUMBER**

ENTRY NUMBER	ØZ ±.010	Y ±.010	X ±.010
0 1	.125	N/A	N/A
0 2	.156	N/A	N/A
0 3	.188	N/A	N/A
0 4	.234	N/A	N/A
0 5	N/A	.312	.220
0 6	N/A	.375	.220
0 7	N/A	.469	.220
0 8	N/A	.500	.250
1 4	N/A	.875	.281

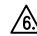
NOTES: UNLESS OTHERWISE SPECIFIED.

- ASSEMBLY IDENTIFICATION PER MIL-STD-1285.
- MATERIAL: ADAPTER - ALUMINUM ALLOY.  
 BRAID - TINNED COPPER.  
 HARDWARE - SST

 SCREWS CAPTIVATED WITH NYLON WASHERS STANDARD, NOT SUPPLIED WITH 'C' OPTION.

 ENTRY SIZES 05 THRU 14 TO BE ELLIPTICAL ENTRIES AND SHIELD TERMINATION BY BANDING ONLY.

 CONSULT FACTORY FOR ADAPTERS THAT MATE WITH /6, /7, /8 & /9 CLASS P (PLASTIC SHELL CONNECTORS).

 JACK POST SUPPLIED WITH 2 LOCK WASHER AND 2 HEX NUT. (CONSULT FACTORY FOR SHELL SIZE 100)