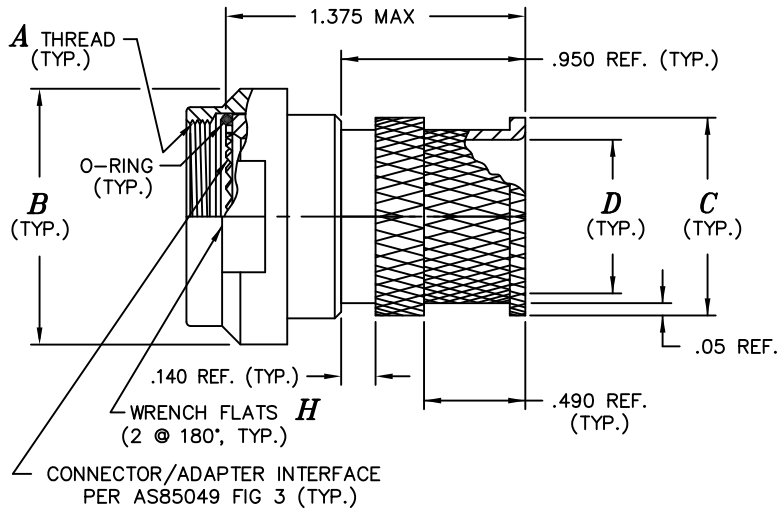




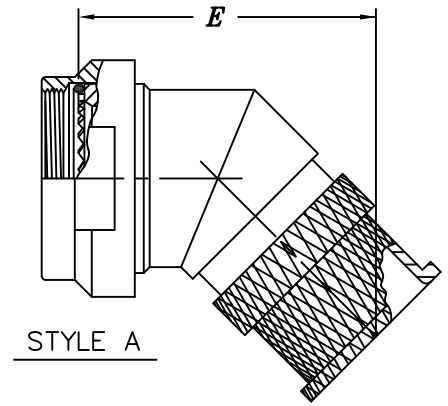
**ELECTRO ADAPTER, INC.**  
 CHATSWORTH, CALIFORNIA, USA 91311  
 PHONE: (818) 998-1198  
 FAX: (818) 709-5773  
 www.electro-adapter.com

**CONSTANT FORCE SPRING  
 ADAPTER FOR  
 MIL-DTL-38999, SERIES III & IV**

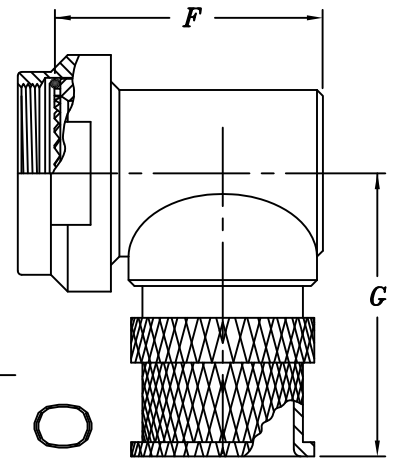
**SPECIFICATION CONTROL DRAWING  
 901-423**



**STYLE S**



**STYLE A**



**STYLE R**

*Example Part Number*

**901 - 423S210**

**BASIC ADAPTER NUMBER**

**ADAPTER STYLE**

- STYLE S = STRAIGHT ADAPTER
- STYLE A = 45° ADAPTER
- STYLE R = 90° ADAPTER

**PLATING CODE NUMBER**

- 10 = PASSIVATE, PER SAE-AMS-QQ-P-35
- 12 = BLACK, ZINC NICKEL, TYPE II, CLASS 2
- 55 = CADMIUM, OLIVE DRAB, PER SAE AMS-QQ-P-416, TYPE II, CLASS 3,  
OVER ELECTROLESS NICKEL PER AMS-C-26074, CLASS 3 OR 4, GRADE B
- 56 = ELECTROLESS NICKEL PER SAE AMS-2404F, CLASS 3 OR 4, GRADE A.

FOR ADDITIONAL FINISH OPTIONS, SEE CATALOG TABLE 4.

**NOTES:**

1. ASSEMBLY IDENT. PER MIL-STD-1285.
2. MATERIAL: COMPONENTS - ALUMINUM ALLOY, 300 SERIES STAINLESS STEEL. O-RING - SILICONE
3. SEE DRAWING NUMBER 901-436 FOR SHIELD TERMINATION SPRING. (TACOM DWG#12347630)
4. QUALIFIED TO TACOM DRAWINGS NO'S  
 45° ~ 12387118  
 45° ~ 12387117  
 90° ~ 12387119

**ADAPTER DATA**

ORDER NUMBER	SHELL SIZE		A METRIC THD. CLASS 6H	B MAX. DIA.	C MAX. DIA.	D REF. DIA.	E REF.	F REF.	G REF.	H ACROSS FLATS
	COM'L.	MIL.								
1	9	A	M12 x 1.0	.78	.53	.25	1.57	.81	1.344	.625
2	11	B	M15 x 1.0	.91	.61	.37	1.59	.93	1.406	.750
3	13	C	M18 x 1.0	1.03	.78	.50	1.63	1.06	1.469	.875
4	15	D	M22 x 1.0	1.16	.84	.62	1.67	1.18	1.531	1.000
5	17	E	M25 x 1.0	1.28	.96	.75	1.71	1.31	1.594	1.125
6	19	F	M28 x 1.0	1.41	1.04	.81	1.77	1.37	1.656	1.250
7	21	G	M31 x 1.0	1.53	1.22	1.00	1.81	1.50	1.719	1.375
8	23	H	M34 x 1.0	1.66	1.35	1.12	1.84	1.62	1.781	1.500
9	25	J	M37 x 1.0	1.78	1.48	1.25	1.90	1.68	1.844	1.625