

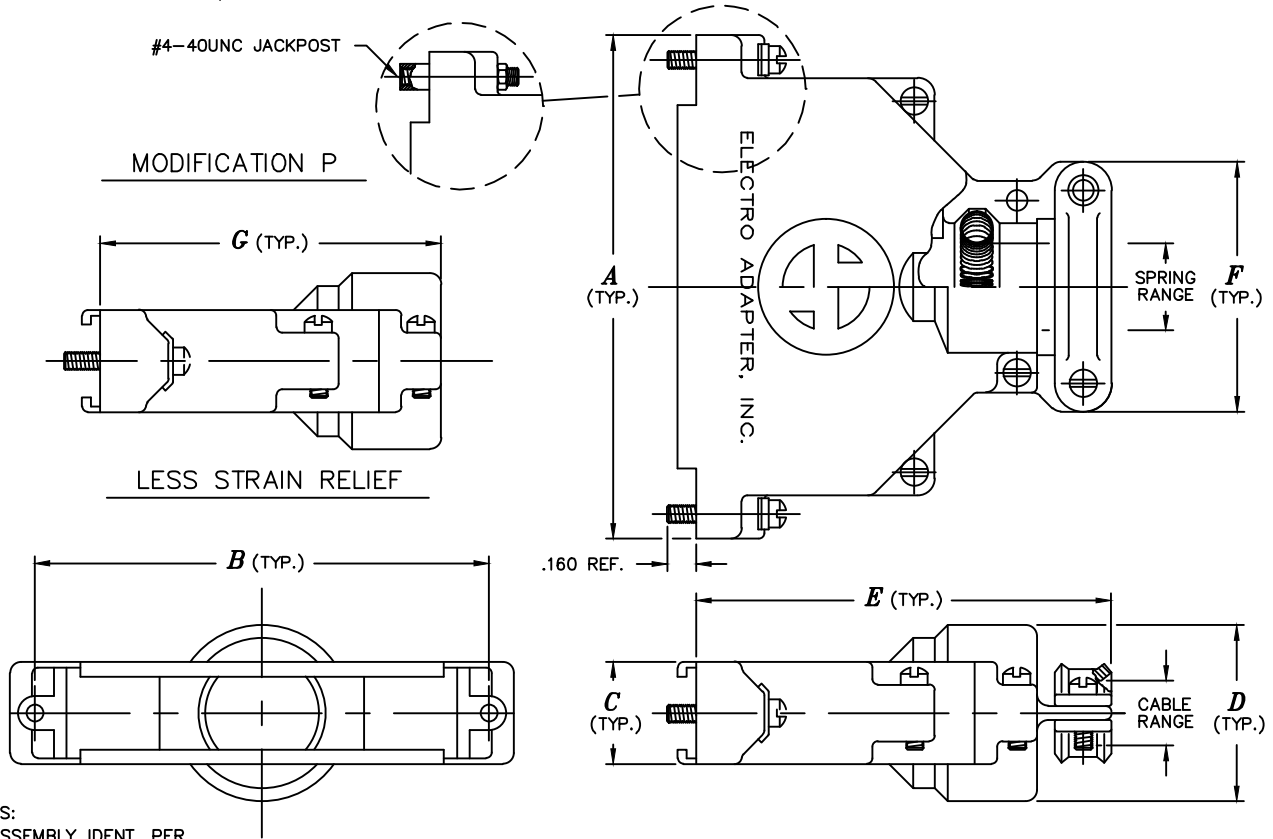


ELECTRO ADAPTER, INC.
 CHATSWORTH, CALIFORNIA, USA 91311
 PHONE: (818) 998-1198
 FAX: (818) 709-5773
 WEB SITE: www.electro-adapter.com

SPLIT BACKSHELL, EMI
 FOR MIL-DTL-24308, D-SUB
 SPRING TERMINATION WITH OPTIONAL
 STRAIN RELIEF, STRAIGHT ENTRY

SPECIFICATION CONTROL DRAWING

900653



NOTES:

1. ASSEMBLY IDENT. PER MIL-STD-1285.
 2. MATERIAL: COMPONENTS - ALUMINUM ALLOY
- ⚠ FOR MULTIPLE MOD. CODES USE SEQUENCE SHOWN
- ⚠ JACKSCREW PLUS CLIP INCLUDED WITH STANDARD PART.

Example Part Number

900653-06RS02P

BASIC ADAPTER NUMBER

TABLE I - PLUG MOUNT DATA

ORDER NUMBER	SHELL SIZE	A ±.031	B ±.010	C ±.031	D ±.031	E ±.094	F ±.031	G ±.094	CABLE RANGE		SPRING RANGE	
									MAX.	MIN.	MAX.	MIN.
0 1	9	1.257	.984	.562	.594	1.750	.750	1.438	.265	.203	.250	.188
0 2	15	1.627	1.312	.562	.719	1.750	1.000	1.438	.265	.203	.250	.188
0 3	15	1.627	1.312	.562	.719	1.750	1.000	1.438	.454	.383	.375	.312
0 4	25	2.160	1.852	.562	.702	2.350	1.000	1.938	.265	.203	.250	.188
0 5	25	2.160	1.852	.562	.875	2.250	1.125	1.938	.460	.400	.438	.375
0 6	25	2.160	1.852	.562	.875	2.250	1.125	1.938	.560	.500	.500	.438
0 7	37	2.773	2.500	.562	.969	2.312	1.375	1.938	.460	.400	.438	.375
0 8	37	2.773	2.500	.562	.969	2.312	1.375	1.938	.625	.562	.562	.500
0 9	37	2.773	2.500	.562	.969	2.312	1.375	1.938	.688	.625	.625	.562
1 0	50	2.720	2.406	.760	1.000	2.350	1.375	1.938	.460	.400	.438	.375
1 1	50	2.720	2.406	.760	1.000	2.350	1.375	1.938	.560	.500	.500	.438
1 2	50	2.720	2.406	.760	1.000	2.350	1.375	1.938	.625	.562	.562	.500
1 3	50	2.720	2.406	.760	1.000	2.350	1.375	1.938	.688	.625	.625	.562
1 5	25	2.160	1.852	.562	.969	2.312	1.375	1.938	.688	.625	.625	.562
1 6	25	2.160	1.852	.562	.719	2.250	1.000	1.938	.445	.383	.375	.312
1 7	25	2.160	1.852	.562	.719	2.250	1.000	1.938	.375	.312	.312	.250
1 8	25	2.160	1.852	.562	.969	2.312	1.375	1.938	.625	.562	.500	.438
1 9	37	2.773	2.500	.562	.969	2.312	1.375	1.938	.625	.562	.500	.438
2 0	15	1.627	1.312	.562	.719	1.750	1.000	1.438	.281	.203	.250	.188

MODIFICATION CODE ⚠

- J = JACKSCREW LESS CLIP ⚠
- L = LESS JACKSCREW AND CLIP
- P = JACKPOST AND NUT
- C = HELICAL CONDUIT THREAD
- OMIT IF NOT REQUIRED

PLATING CODE NUMBER

- 02 = CADMIUM, GOLD, PER SAE AMS-QQ-P-416 TYPE II, CLASS 3
- 21 = IRIDITE, GOLD, NUMBER 14-2 PER MIL-C-5541, CLASS 3
- 51 = ELECTROLESS NICKEL PER AMS-C-26074, CLASS 3 OR 4, GRADE B
- FOR ADDITIONAL FINISH OPTIONS, SEE CATALOG TABLE 4.

STRAIN RELIEF

- S = SADDLE BAR STRAIN RELIEF
- OMIT IF NOT REQUIRED

SHIELD TERMINATION OPTION

- R = INCLUDES SHIELD TERMINATOR
- N = WITHOUT SHIELD TERMINATOR



STANDARD FINISHES

PLATING CODE	FINISH	SPECIFICATION	ACCESSORY MATERIAL	CORROSION RESISTANCE (HRS)	ROHS COMPLIANT
0 3	CADIUM PLATE, OLIVE DRAB	SAE AMS-QQ-P-416, TYPE II, CLASS 3	ALUMINUM	96	NO
1 0	PASSIVATE	SAE AMS-QQ-P-35, (AS85049 CODE S)	STAINLESS STEEL	1000	YES
1 2	ZINC NICKEL, BLACK	ASTM B841	ALUMINUM	500	YES
1 3	ZINC COBALT, OLIVE DRAB	ASTM B840-99	ALUMINUM	96	NO
1 4	ZINC COBALT, BLACK	ASTM B840-99	ALUMINUM	96	NO
2 1	IRIDITE, 14-2, GOLD	IRIDITE, NUMBER 14-2 PER MIL-DTL-5541 CL 3	ALUMINUM	96	NO
3 4	ANODIZE, BLACK	MIL-A-8625, TYPE II, CL 3 (AS85049 CODE A)	ALUMINUM	1000	YES
3 5	ANODIZE ,GREY	MIL-A-8625, TYPE II, CLASS 2	ALUMINUM	500	YES
4 4	ANODIZE, HARD, BLACK	MIL-A-8625, TYPE II, CLASS 2	ALUMINUM	500	YES
4 5	ANODIZE, HARD, GREY	MIL-A-8625, TYPE II, CLASS 2	ALUMINUM	1000	YES
4 8	ELECTROLESS NICKEL	AMS-2404F, CLASS 4, GRADE B	STAINLESS STEEL	48	NO
5 1	ELECTROLESS NICKEL	AMS-2404F, CLASS 4, GRADE B	ALUMINUM	48	NO
5 5	CADIUM PLATE, OLIVE DRAB, OVER ELECTROLESS NICKEL	SAE AMS-QQ-P-416, TYPE II, CLASS 3, OVER ELECTROLESS NICKEL, PER AMS-2404F (AS85049 CODE W)	ALUMINUM	1000	NO
5 6	ELECTROLESS NICKEL	AMS-2404F, CLASS 4, GRADE A	ALUMINUM	96	NO
5 6 R	ELECTROLESS NICKEL	AMS-2404F, CLASS 4, GRADE A	ALUMINUM	48	YES
5 7	ELECTROLESS NICKEL	AMS-2404F, CLASS 4, GRADE A (AS85049 CODE N)	ALUMINUM	96	NO
64	CADIUM PLATE, OLIVE DRAB, OVER ELECTROLESS NICKEL	SAE AMS-QQ-P-416, TYPE II, CLASS 3, OVER ELECTROLESS NICKEL, PER AMS-2404F (SELECTIVE PLATING REF AS85049 CODE P)	ALUMINUM	1000	NO
85	PASSIVATED	SAE AMS-QQ-P-35	316 SST	1000	YES
87	BEAD BLASTED	N/A	NI. ALUM. BRONZE	1000	YES

NOTES: UNLESS OTHERWISE SPECIFIED

- CORROSION RESISTANCE IS SPECIFIED FOR SALT SPRAY IN ACCORDANCE WITH AS85049
- CONSULT FACTORY FOR OTHER FINISHES
- FINISHES ARE APPLICABLE TO THE CONNECTOR ACCESSORIES ONLY AND EXCLUDE FASTENERS AND OTHER HARDWARE
- EMI/RFI ACCESSORIES ARE SUPPLIED WITH CONDUCTIVE FINISHES ONLY
- ANODIZE NOT SUITABLE FOR EMI SHIELDING OR GROUNDING APPLICATIONS
- ALL THE CONDUCTIVE FINISHES USED ON ALUMINUM CAN ALSO BE USED ON BRASS (CONSULT FACTORY)
- CADMIUM/NICKEL INTERFACE SHALL BE COATED WITH POLYSULFIDE SEALANT (REF FIGURE 2 BELOW)

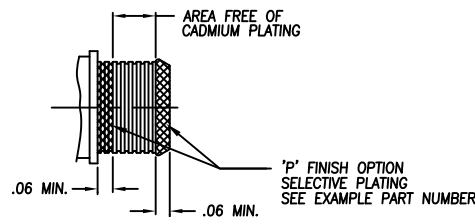


FIGURE 2



STANDARD MATERIALS

COMPONENT	MATERIAL	SPECIFICATION
MACHINED COMPONENTS	ALUMINUM STAINLESS STEEL (300 SERIES) BRASS NICKEL ALUMINUM BRONZE	ASTM B221, ASTM B211 (MFG OPTION) AMS-QQ-S-763, QQ-S-764 (MFG OPTION) QQ-B-626 ASTMB150 (AMS4640)
DIE CAST COMPONENTS	ALUMINUM	ASTM B 85
FASTENERS AND HARDWARE	STAINLESS STEEL (300 SERIES) STEEL BRASS	AMS-QQ-S-763 SAE20, QQ-S-634, QQ-S-637 QQ-B-626
ELASTOMERIC SEALS	SILICONE BUNA-N NEOPRENE	ZZ-R-765B, MIL-R-25988 AMS-3209 MIL-R-3065

NOTES: UNLESS OTHERWISE SPECIFIED

1. THE SPECIFIED MATERIALS ARE STANDARD FOR THE MAJORITY OF CONNECTOR ACCESSORIES
2. CONSULT FACTORY FOR OTHER MATERIALS
3. FOR DOCUMENTS LISTED WITHIN THIS CATALOG WITH OUT A TOLERANCE SHOWN SHALL HAVE TOLERANCES AS FALLOWED:
 - .X = $\pm .2$
 - .XX = $\pm .12$
 - .XXX = $\pm .062$
 - X° = $\pm 10^\circ$