

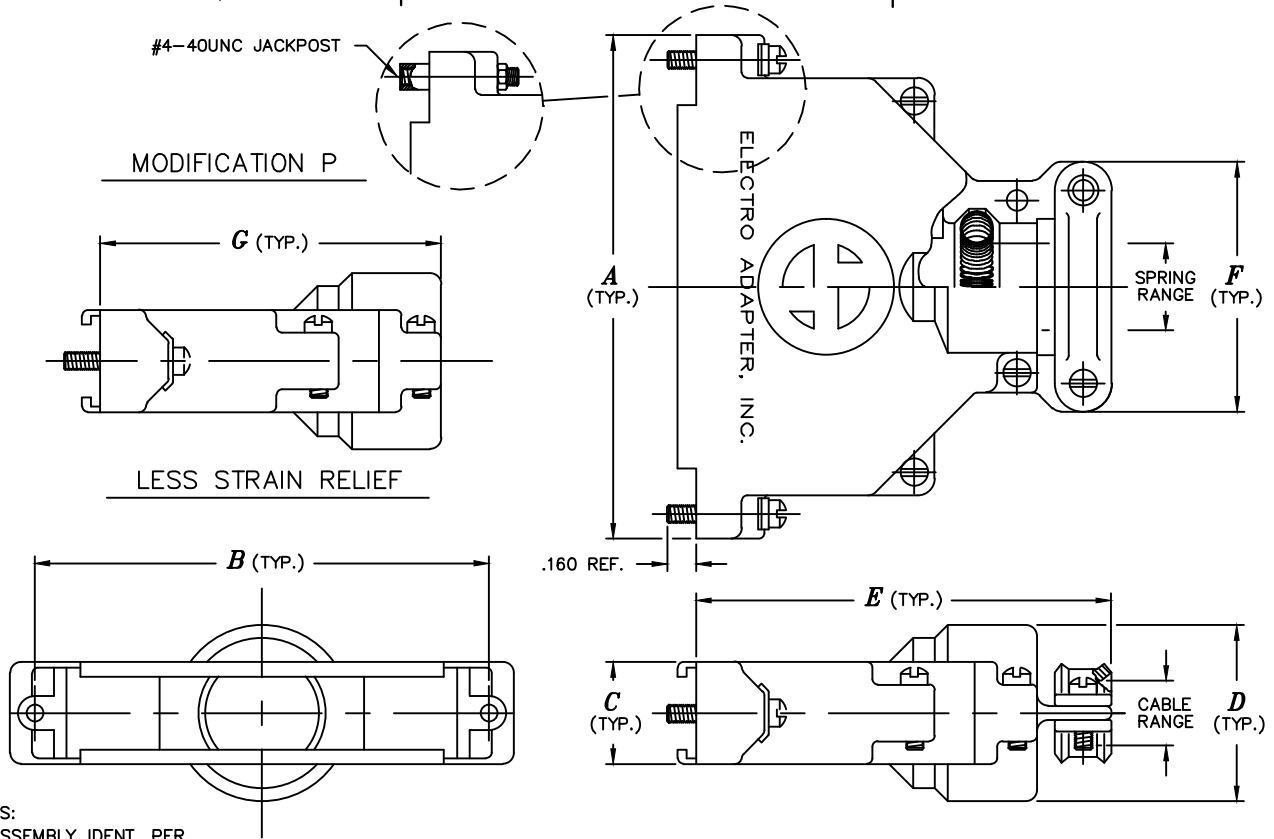


# ELECTRO ADAPTER, INC.

CHATSORTH, CALIFORNIA, USA 91311  
PHONE: (818) 998-1198  
FAX: (818) 709-5773  
WEB SITE: www.electro-adapter.com

SPLIT-BACKSHELL, EMI  
FOR MIL-DTL-24308, D-SUB  
SPRING TERMINATION WITH OPTIONAL  
STRAIN RELIEF, STRAIGHT ENTRY

SPECIFICATION CONTROL DRAWING  
**900653**



### NOTES:

- ASSEMBLY IDENT. PER MIL-STD-1285.
  - MATERIAL: COMPONENTS - ALUMINUM ALLOY
- ⚠ FOR MULTIPLE MOD. CODES USE SEQUENCE SHOWN
- ⚠ JACKSCREW PLUS CLIP INCLUDED WITH STANDARD PART.

## Example Part Number

**900653-06RS02P**

BASIC ADAPTER NUMBER

TABLE I - PLUG MOUNT DATA

ORDER NUMBER	SHELL SIZE	A ±.031	B ±.010	C ±.031	D ±.031	E ±.094	F ±.031	G ±.094	CABLE RANGE		SPRING RANGE	
									MAX.	MIN.	MAX.	MIN.
0 1	9	1.257	.984	.562	.594	1.750	.750	1.438	.265	.203	.250	.188
0 2	15	1.627	1.312	.562	.719	1.750	1.000	1.438	.265	.203	.250	.188
0 3	15	1.627	1.312	.562	.719	1.750	1.000	1.438	.454	.383	.375	.312
0 4	25	2.160	1.852	.562	.702	2.350	1.000	1.938	.265	.203	.250	.188
0 5	25	2.160	1.852	.562	.875	2.250	1.125	1.938	.460	.400	.438	.375
0 6	25	2.160	1.852	.562	.875	2.250	1.125	1.938	.560	.500	.500	.438
0 7	37	2.773	2.500	.562	.969	2.312	1.375	1.938	.460	.400	.438	.375
0 8	37	2.773	2.500	.562	.969	2.312	1.375	1.938	.625	.562	.562	.500
0 9	37	2.773	2.500	.562	.969	2.312	1.375	1.938	.688	.625	.625	.562
1 0	50	2.720	2.406	.760	1.000	2.350	1.375	1.938	.460	.400	.438	.375
1 1	50	2.720	2.406	.760	1.000	2.350	1.375	1.938	.560	.500	.500	.438
1 2	50	2.720	2.406	.760	1.000	2.350	1.375	1.938	.625	.562	.562	.500
1 3	50	2.720	2.406	.760	1.000	2.350	1.375	1.938	.688	.625	.625	.562
1 5	25	2.160	1.852	.562	.969	2.312	1.375	1.938	.688	.625	.625	.562
1 6	25	2.160	1.852	.562	.719	2.250	1.000	1.938	.445	.383	.375	.312
1 7	25	2.160	1.852	.562	.719	2.250	1.000	1.938	.375	.312	.312	.250
1 8	25	2.160	1.852	.562	.969	2.312	1.375	1.938	.625	.562	.500	.438
1 9	37	2.773	2.500	.562	.969	2.312	1.375	1.938	.625	.562	.500	.438
2 0	15	1.627	1.312	.562	.719	1.750	1.000	1.438	.281	.203	.250	.188

### MODIFICATION CODE

- J = JACKSCREW LESS CLIP
- L = LESS JACKSCREW AND CLIP
- P = JACKPOST AND NUT
- C = HELICAL CONDUIT THREAD
- OMIT IF NOT REQUIRED

### PLATING CODE NUMBER

- 02 = CADMIUM, GOLD, PER SAE AMS-QQ-P-416 TYPE II, CLASS 3
- 21 = IRIDITE, GOLD, NUMBER 14-2 PER MIL-C-5541, CLASS 3
- 51 = ELECTROLESS NICKEL PER AMS-C-26074, CLASS 3 OR 4, GRADE B
- FOR ADDITIONAL FINISH OPTIONS, SEE CATALOG TABLE 4.

### STRAIN RELIEF

- S = SADDLE BAR STRAIN RELIEF
- OMIT IF NOT REQUIRED

### SHIELD TERMINATION OPTION

- R = INCLUDES SHIELD TERMINATOR
- N = WITHOUT SHIELD TERMINATOR