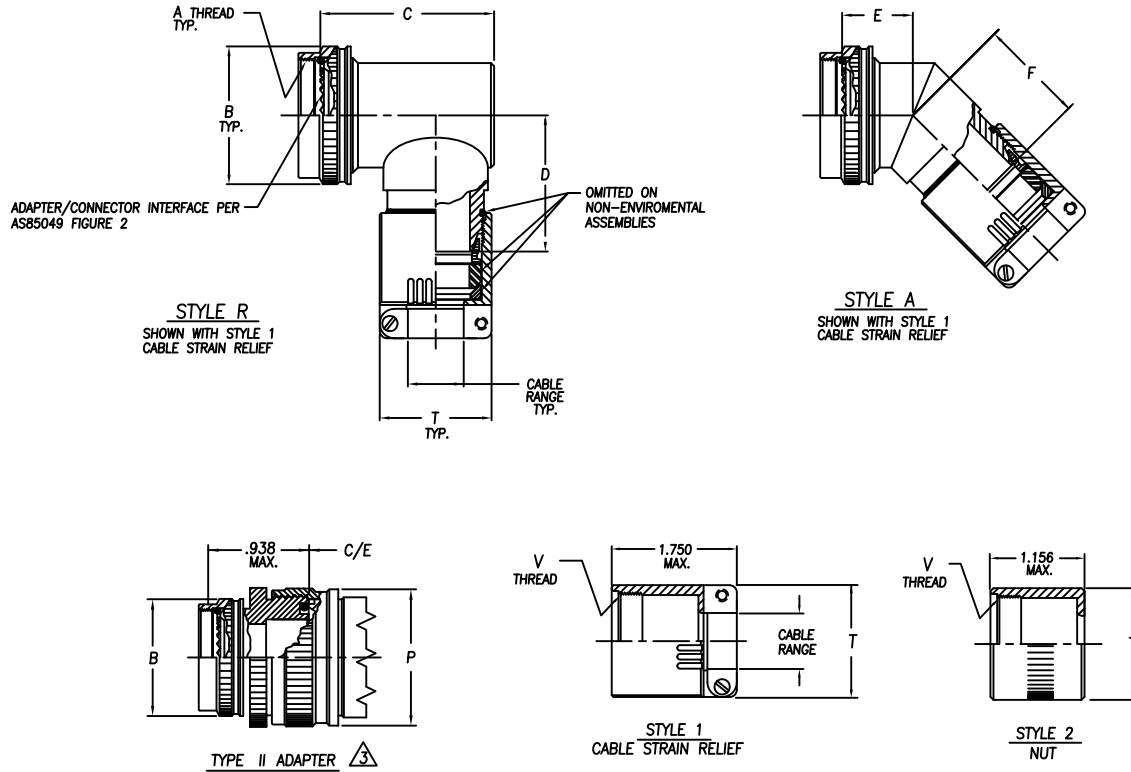




**ELECTRO ADAPTER, INC.**  
 CHATSWORTH, CALIFORNIA, USA 91311  
 PHONE: (818) 998-1198  
 FAX: (818) 709-5773  
 WEB SITE: www.electro-adapter.com

ADAPTER, 45° & 90°, SINGLE CONE,  
 STRAIN-RELIEF, EMI/RFI, EMP,  
 MIL-DTL-38999 SERIES I & II  
 ENVIRONMENTAL

SPECIFICATION CONTROL DRAWING  
 23041



*Example Part Number*  
**23041A12041S0055**

CONNECTOR CODE  
 MIL-C-38999, SERIES I & II

ADAPTER STYLE  
 R - 90 ADAPTER  
 A - 45 ADAPTER

PLATING CODE NUMBER

55 = CADMIUM, OLIVE DRAB, PER QQ-P-416, TYPE II, CL.3  
 OVER ELECTROLESS NICKEL PER MIL-C-26074,  
 CLASS 3 OR 4, GRADE B.  
 56 = ELECTROLESS NICKEL MIL-C-26074, CL.3 OR 4  
 .001 MIN. WITH IRIDITE CONVERSION.  
 FOR ADDITIONAL FINISH OPTIONS, SEE CATALOG TABLE 4.

GLAND & O'RING MAT'L. OPTION  
 S = SILICONE  
 B = BUNA/NEOPRENE  
 N = NON-ENVIRONMENTAL

CABLE STRAIN RELIEF  
 STYLE 1 OR 2

CONNECTOR ORDER NUMBER									
ORDER NUMBER	SHELL SIZE		A UNIFIED THD. CLASS 2B	B MAX. DIA.	C MAX. DIA.	D MAX.	E ±.125	F MAX.	MAX. ENTRY TYPE I
	SER. II	SER. I							
08	8	9	.438-28	.703	.938	1.562	.500	1.062	04
10	10	11	.562-24	.827	1.125	1.625	.500	1.094	06
12	12	13	.688-24	.953	1.188	1.688	.562	1.125	08
14	14	15	.812-20	1.077	1.312	1.750	.562	1.188	10
16	16	17	.938-20	1.203	1.438	1.812	.594	1.188	12
18	18	19	1.062-18	1.327	1.500	1.875	.625	1.188	14
20	20	21	1.188-18	1.453	1.625	1.938	.688	1.219	16
22	22	23	1.312-18	1.577	1.750	2.000	.656	1.250	18
24	24	25	1.438-18	1.703	1.875	2.062	.688	1.250	20

ENTRY ORDER NUMBER					
ENTRY ORDER NUMBER	V UNIFIED THD. CLASS 2A	CABLE RANGE		ø T MAX.	ø P MAX.
		MAX.	MIN.		
04	.625-24	.250	.125	.875	N/A
06	.750-20	.375	.219	1.000	.858
08	.875-20	.500	.344	1.125	.984
10	1.000-20	.625	.469	1.250	1.112
12	1.125-18	.750	.594	1.375	1.345
14	1.250-18	.875	.719	1.500	1.345
16	1.375-18	1.000	.844	1.625	1.469
18	1.500-18	1.125	.969	1.750	1.594
20	1.625-16	1.250	1.094	1.875	1.969

NOTES: UNLESS OTHERWISE SPECIFIED

- ASSEMBLY IDENTIFICATION PER MIL-STD-1285.
- MATERIAL: ADAPTER COMPONENTS - ALUMINUM ALLOY  
 HARDWARE - SST.
- $\Delta$  A TWO PIECE ADAPTER WILL BE SUPPLIED WHEN CABLE ENTRY EXCEEDS CONNECTOR INTERFACE DIA.
- IF A STRAIGHT ADAPTER IS REQUIRED SEE EAI CATALOG SHEET E\*\*17.
- REF 45° ~ AS85049/77  
 REF 90° ~ AS85049/76